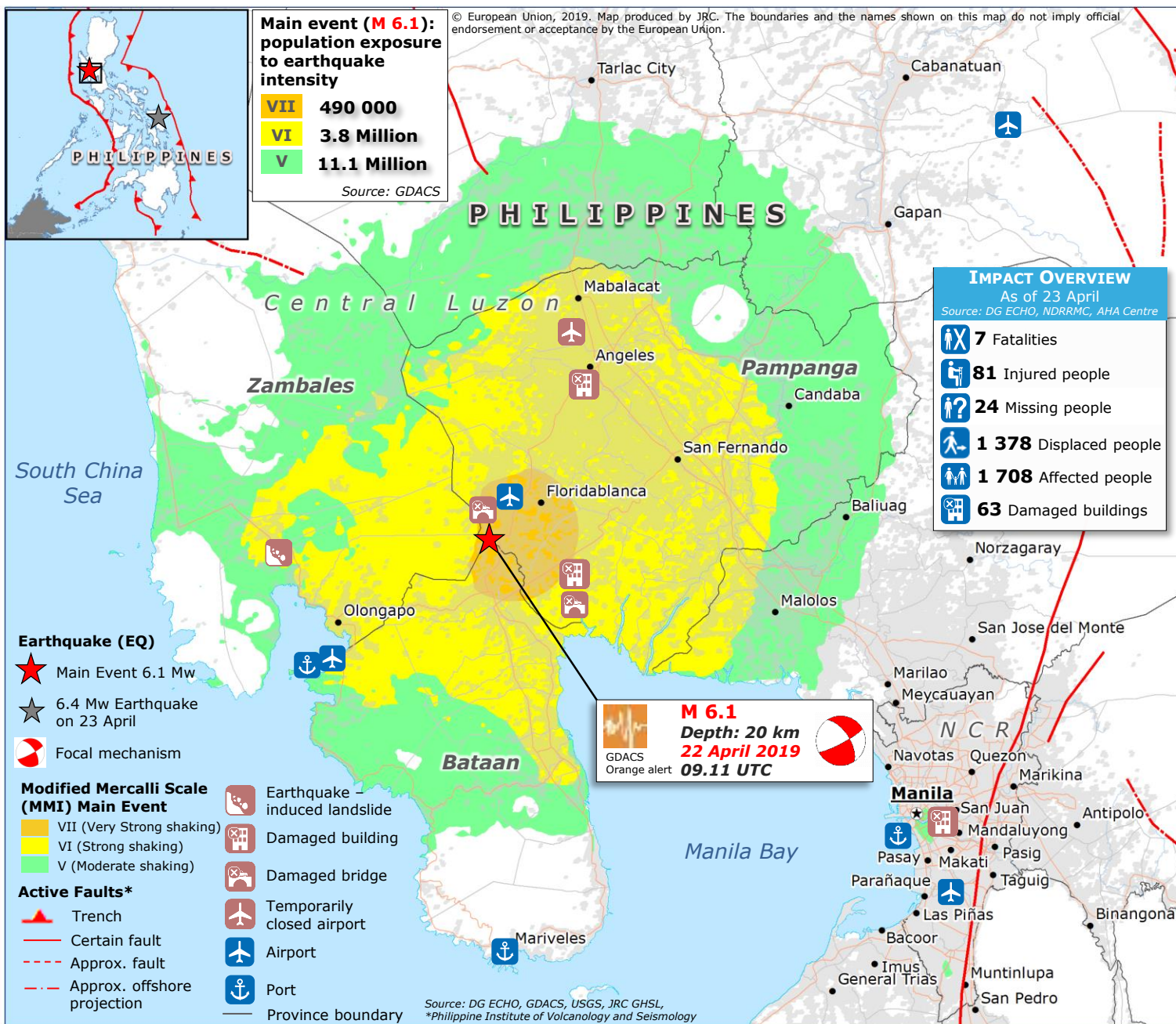
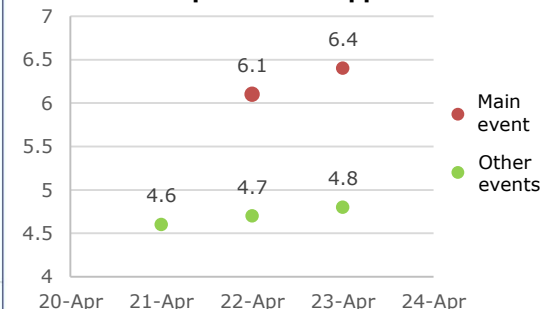


Philippines | 6.1 M Earthquake of 22 April 2019



- An earthquake of 6.1 M at a depth of 20 km struck the central Philippines on 22 April at 09.11 UTC. The epicenter was located between the intersection of the three Provinces of Bataan, Zambales and Pampanga, approximately 65 km north-west of the capital Manila. According to the GDACS, at least 3.8 million people were exposed to $MMI > VI$ (Strong shaking).
- As of 23 April, national authorities confirm seven fatalities, 24 missing and 81 injured. According to preliminary assessments, the earthquake damaged 63 buildings in Central Luzon and National Capital regions including Clark International Airport (northwest of Manila) which has been temporarily closed.

Timeline earthquake in Philippines with $M > 4$



POPULATION PER DISTRICT

Source: JRC GHSL

