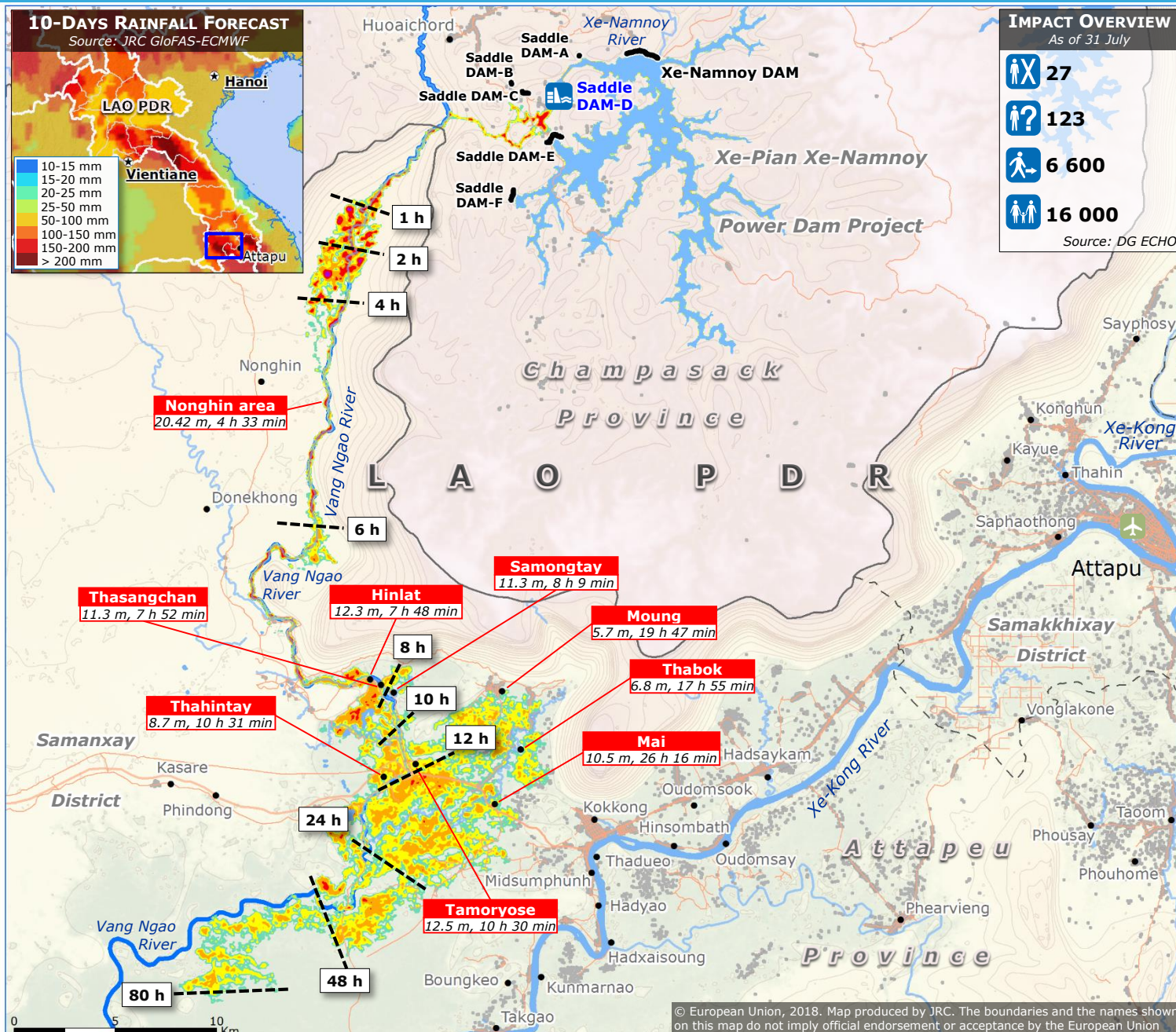


Lao PDR | Dam collapse – Numerical modelling of the flood wave



After the collapse on 23 July of the Saddle Dam-D section of the Xe-Pian-Xe Nam Noy hydropower dam, the death toll reached 27 people. The dam break analysis, performed by JRC and shown in the main map, has identified the areas mostly affected and the extent is in good agreement with the analysis performed by UNOSAT using radar satellite data. The JRC analysis has shown that the most affected locations have been hit after about 7 h from the break, with an estimated water height of about 5-10 m. Source: JRC

