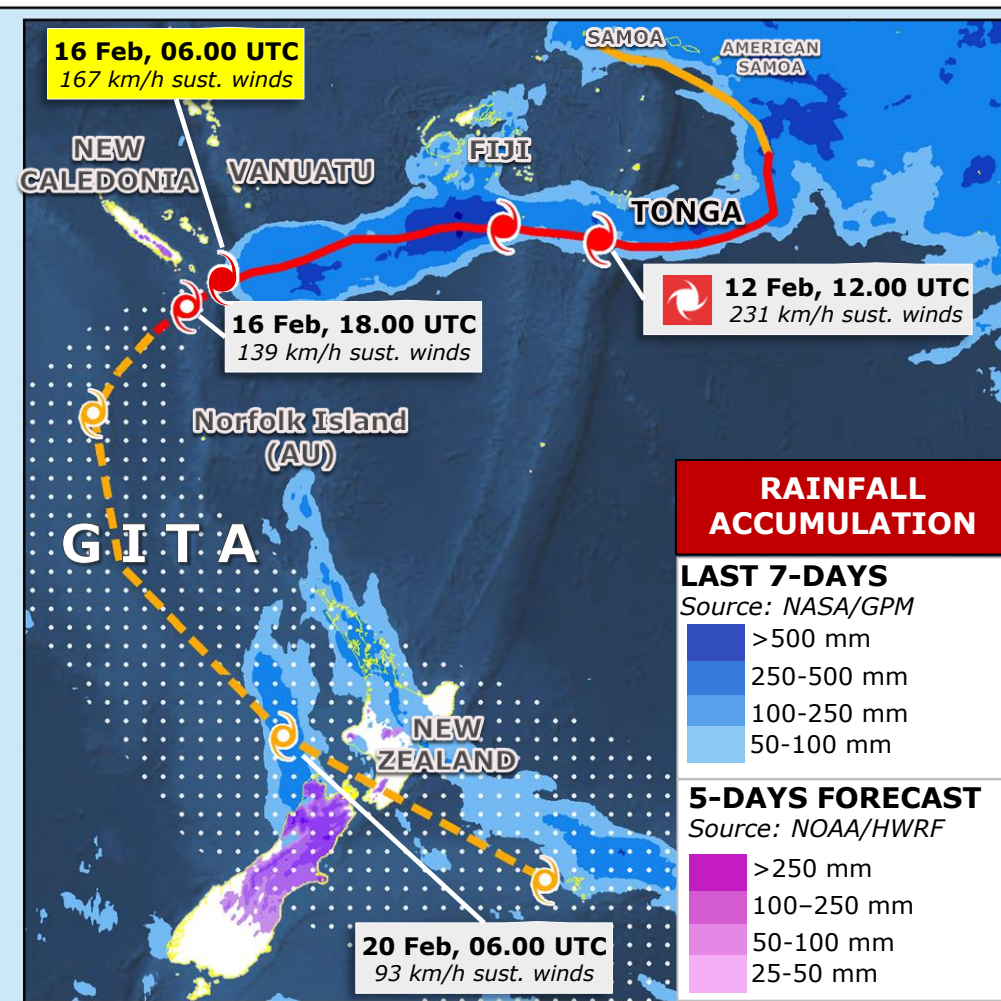
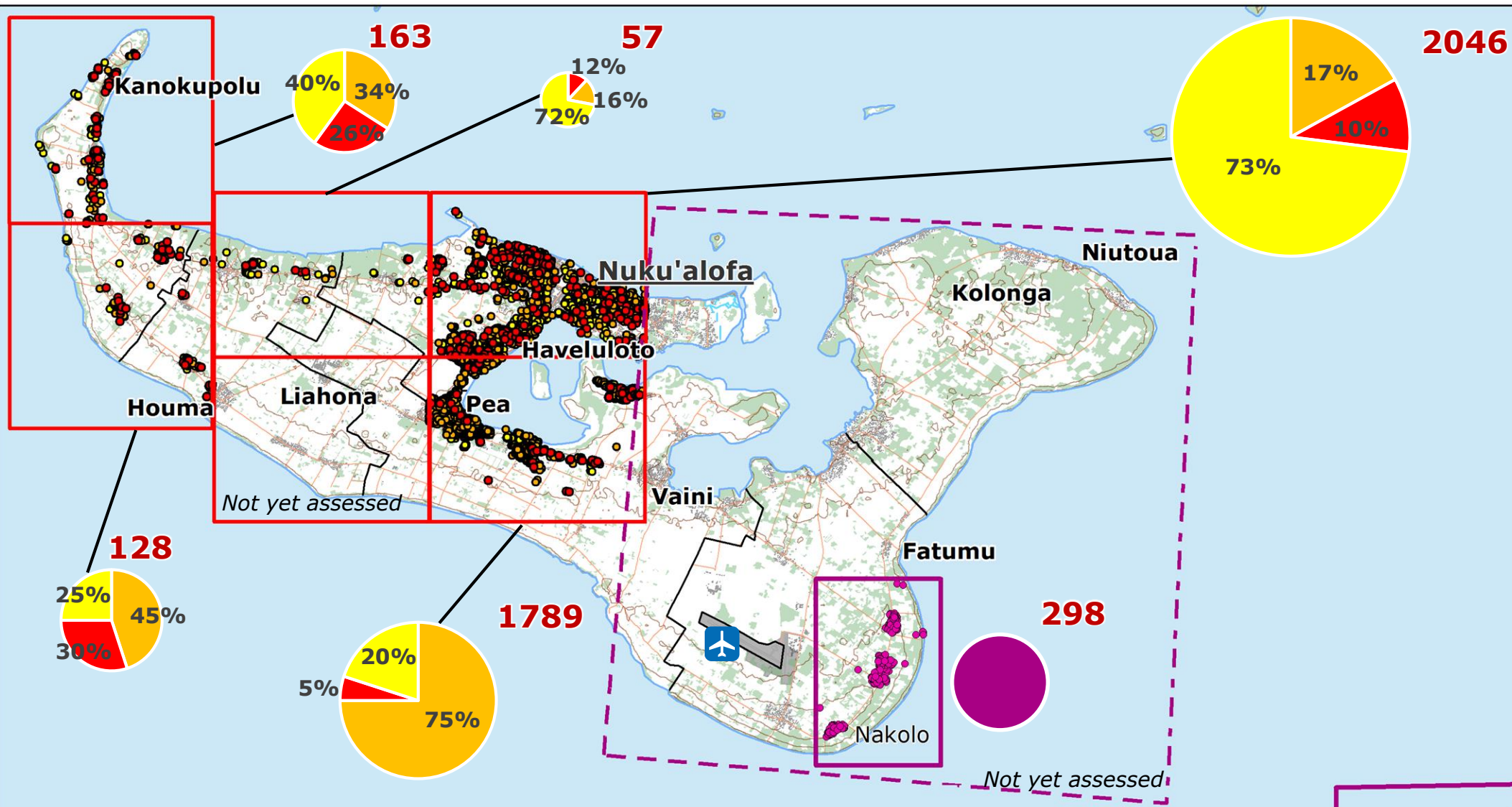


# Tonga | TC GITA Aftermath

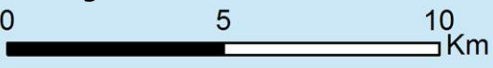


## SITUATION OVERVIEW

16 FEB  
Source: Gov. of Tonga

- 1 fatality**
- 33 people injured**
- 4 521 people evacuated**
- 130 evacuation centers (in whole country)**

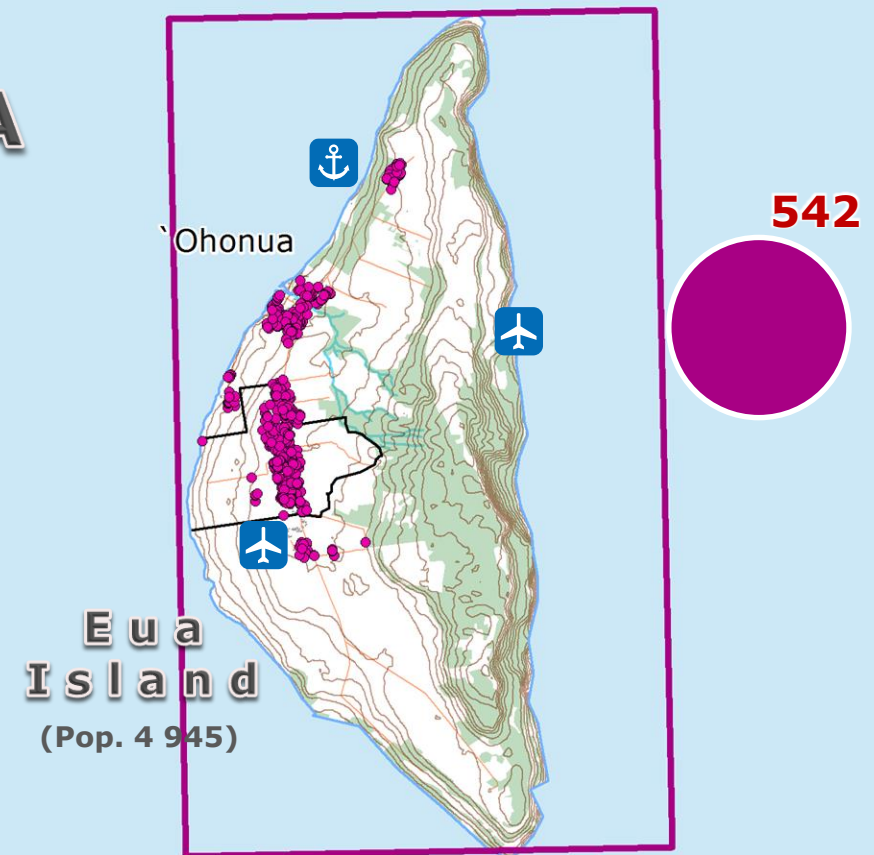
Sources: DG ECHO, GDACS, OCHA, Tongan National Emergency Management Office



**Tongatapu Island**  
(Pop. 74 611)

**TONGA**  
(Pop. 100 651)

SOUTH PACIFIC OCEAN



**TROPICAL CYCLONE**

- Observed position
- Forecast position

**INTENSITY**

- > 118 km/h
- 63 - 118 km/h
- GDACS Red Alert Potential severe disaster

**DAMAGE ASSESSMENT**

**Num** Total number of affected buildings in each covered area

**COPERNICUS EMSR269\***

- Covered area
- Possibly Damaged Building
- Damaged Building
- Destroyed Building

**UNOSAT TC20180209TON**

- Covered area
- Damaged

\*Partial damage assessment due to cloud cover (updates expected)