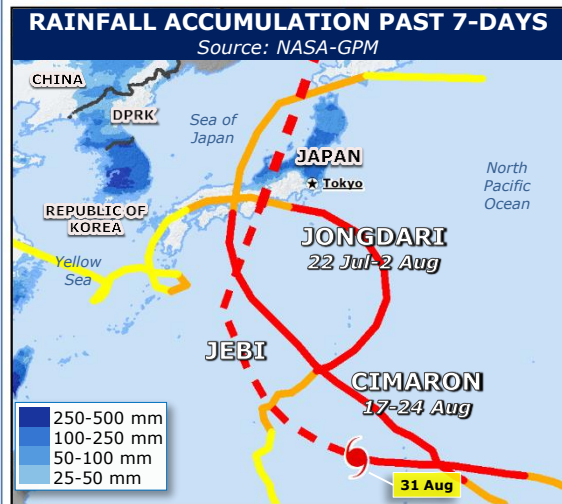
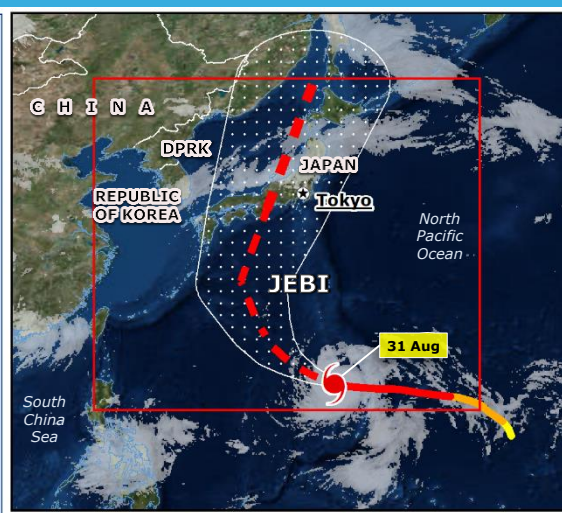
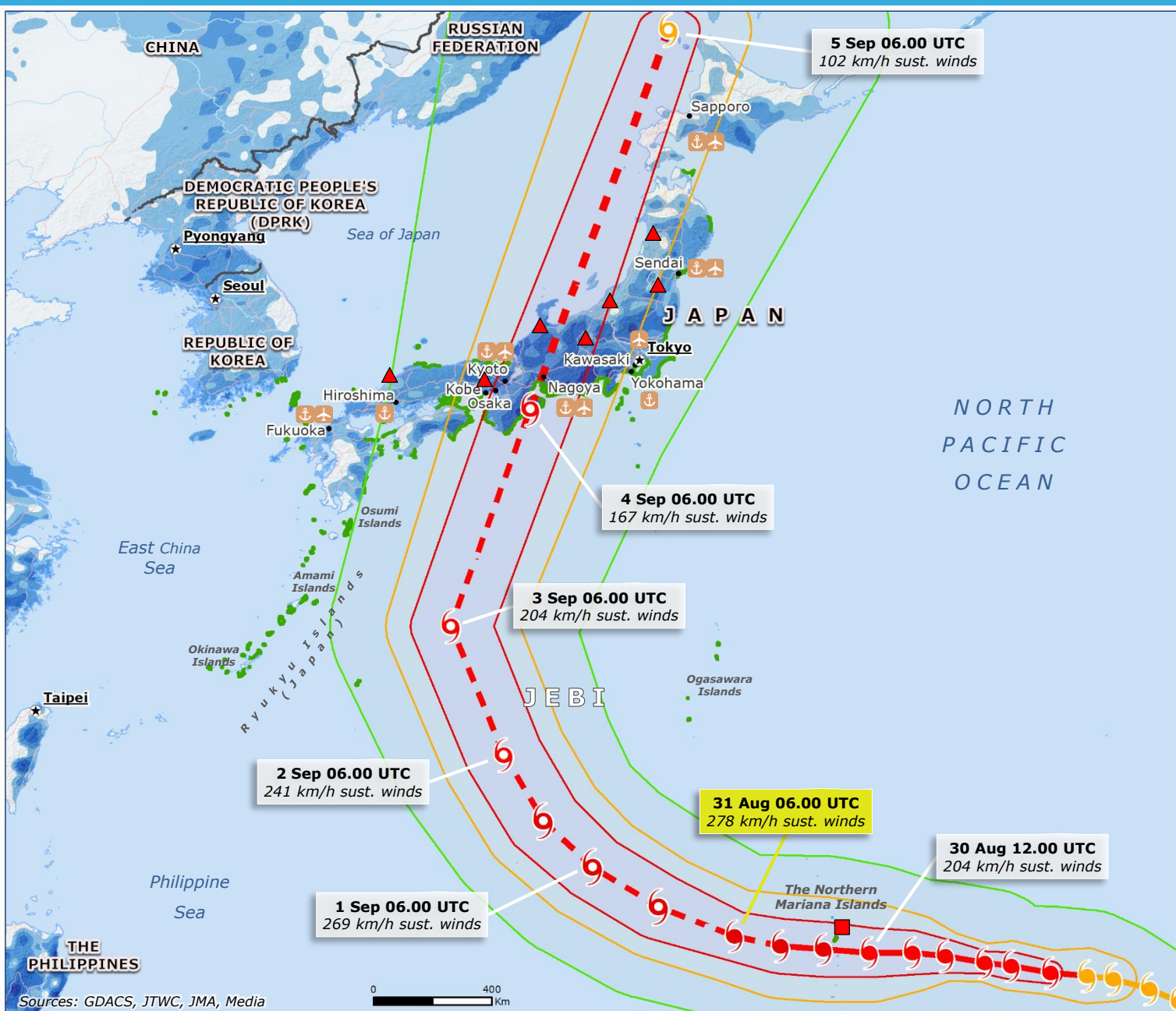


# Northern Mariana Islands, Japan | Tropical Cyclone JEBI



**TROPICAL CYCLONE**

- Observed position
- Forecast position

**INTENSITY**

- < 63 Km/h
- 63-118 Km/h
- > 118 Km/h

**WIND BUFFER**

- > 118 Km/h
- 93-118 Km/h
- 63-92 Km/h

**STORM SURGE** JRC Calculations

- ≤ 1 m

**7-DAYS RAINFALL FORECAST** Source: NOAA-GFS

- > 500 mm
- 250-500 mm
- 100-250 mm
- 50-100 mm
- 25-50 mm

**WARNING** Source: JMA, NOAA

- Heavy rain
- Typhoon

Sources: GDACS, JTWC, JMA, Media

