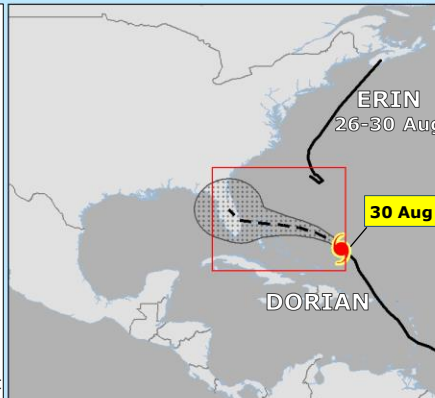
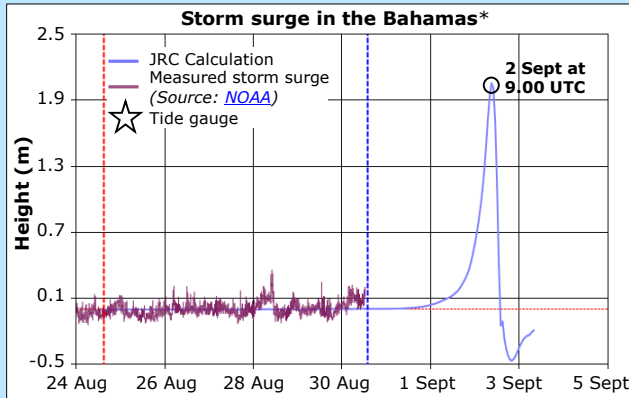


# USA, The Bahamas | Tropical Cyclone DORIAN

\*Expected storm surge in Bahamas. Historically the maximum value has always larger than the calculated one. The maximum values in Florida have not been reached using this forecast and this calculation is not representative for that area.



\*\*Calculation based on NOAA Bulletin n. 24. There is considerable uncertainty on the track after 1 September.

## TROPICAL CYCLONE (TC)

Source: GDACS, NOAA \*\*

- Current position
- Past track
- Forecast track

## Intensity

- 63-118 Km/h (Tropical storm)
- 119-177 Km/h (Category 1-2)
- ≥ 178 Km/h (Category 3-5)

## Wind buffer (Km/h)

- 63-118
- 119-153
- 154-177
- 178-208
- >208

TC Uncertainty cone

## STORM SURGE (Source: JRC, GDACS)

- 0.1 - 1 m
- 1 - 2 m
- 2 - 2.25 m

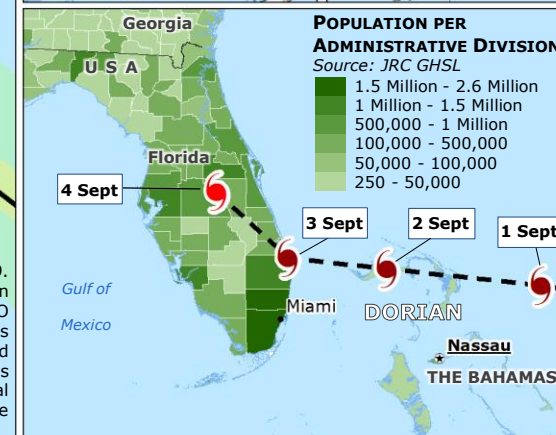
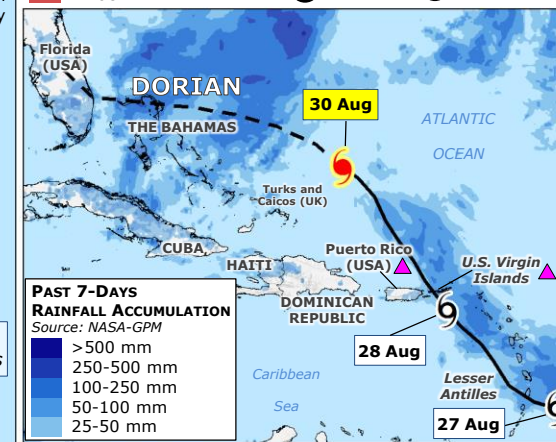
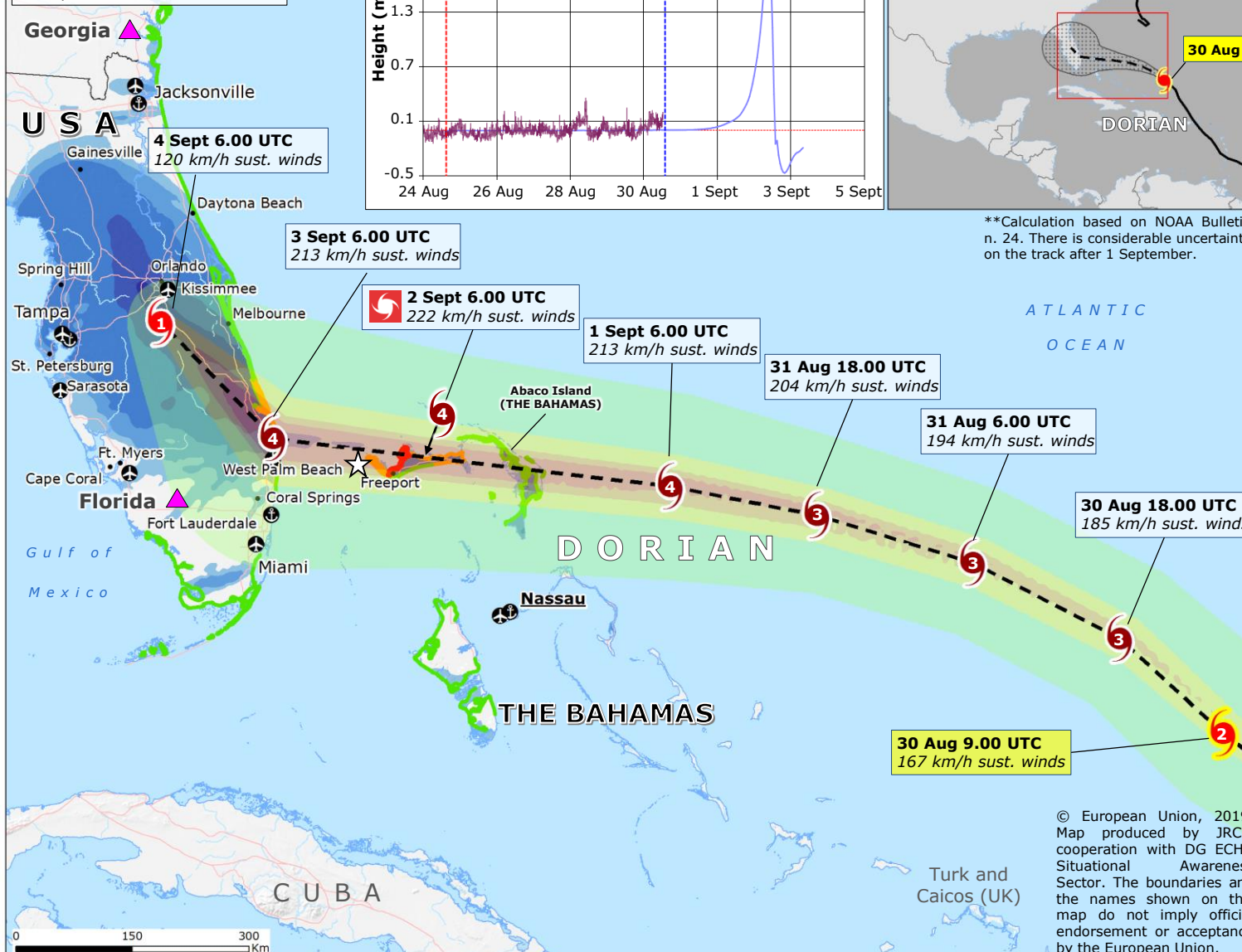
## 5-DAYS RAINFALL FORECAST (Source: NOAA-HWRF)

- > 500 mm
- 250-500 mm
- 100-250 mm
- 50-100 mm
- 25-50 mm

## GDACS Red Alert

Declaration of State of Emergency (Source: FEMA)

Main Port (Anchor icon) Main Airport (Plane icon)



© European Union, 2019. Map produced by JRC in cooperation with DG ECHO Situational Awareness Sector. The boundaries and the names shown on this map do not imply official endorsement or acceptance by the European Union.