


EMSR839 - AOI11
Earthquake in Afghanistan
CHAPA DARA

Pre-event situation
Reference - Overview map 01






Population
~ 45,000



Road
46.3 km



Built-Up
5,931 No.

General Information

- Area of Interest
- Administrative Boundaries
- Province
- Placenames

Built-Up Area

- Residential
- Non residential

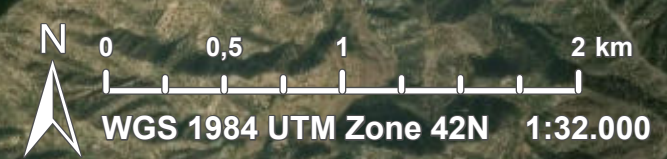
Transportation

- Main road
- Local road
- Track

Event: At 19:17 UTC on Sunday 31 August (23:47 local time), a magnitude 6.0 earthquake hit the province of Konarha in Afghanistan. Given its magnitude and the vulnerability of the affected population, this earthquake is expected to have a significant humanitarian impact. Copernicus EMS Rapid Mapping has been requested to provide emergency mapping of the earthquake's extent and damage.

Data sources and analysis: Pre-event image: Pleiades-1A/B © CNES (2025), distributed by Airbus DS (acquired on 31/10/2024 at 06:11 UTC, resolution 0.5 m). This image is used as background image. All images are provided under COPERNICUS by the European Union and ESA, all rights reserved.

The present map shows basic topographic features derived from public datasets, refined by means of visual interpretation of pre-event imagery.



Exposure within the AOI			
	Unit of measurement		Total in AOI
Estimated population	Number of inhabitants		~ 45,000
Built-up	Residential Buildings	No.	5.835
	Other non-residential buildings	No.	96
Transportation	Secondary Road	km	25,6
	Local Road	km	18,6
	Cart Track	km	2,1
Land use	Heterogeneous agricultural areas	ha	1.891,4
	Forests	ha	423,5
	Shrub and/or herbaceous vegetation association	ha	1.753,5
	Open spaces with little or no vegetation	ha	144,6
	Other	ha	46,3

Disclaimer:

Full disclaimer and other helpful information available in the online manual:

<https://mapping.emergency.copernicus.eu/about/rapid-mapping-manual/>

© European Union / Copernicus Emergency Management Service

Access to the portal



Data Access:

All data displayed on the map(s), as well as Land Use - Land Cover layer(s), are available in the Crisis Information Package and the Base Layer Package (for reference data). The table above is available in editable format in the Crisis Information Package. All products and data are also available for download on the portal.

Estimated Population:

Estimated population is based on Copernicus Global Human Settlement Layer (GHSL) dataset. Additional population datasets and analysis are available in the summary table.

Data Sources:

Base Vector Layers: OpenStreetMap © OpenStreetMap contributors (2025); Wikimapia.org; GeoNames 2015;

Global Administrative Areas (2022), refined by the producer, Globe Land 30 (2010), Copernicus Global Land Service: Land Cover (2019).

Inset Maps: Natural Earth 2023; HydroLAKES 2016 by HydroSHEDS;

© EuroGeographics, © TurkStat. Source: European Commission – Eurostat/GISCO, 2021.

Digital Elevation Model:

FABDEM (ForestAndBuildingsremovedCopernicusDEM) removes building and tree height biases from the Copernicus GLO 30

Digital Elevation Model (DEM) (Airbus, 2020).



PROGRAMME OF THE
EUROPEAN UNION

