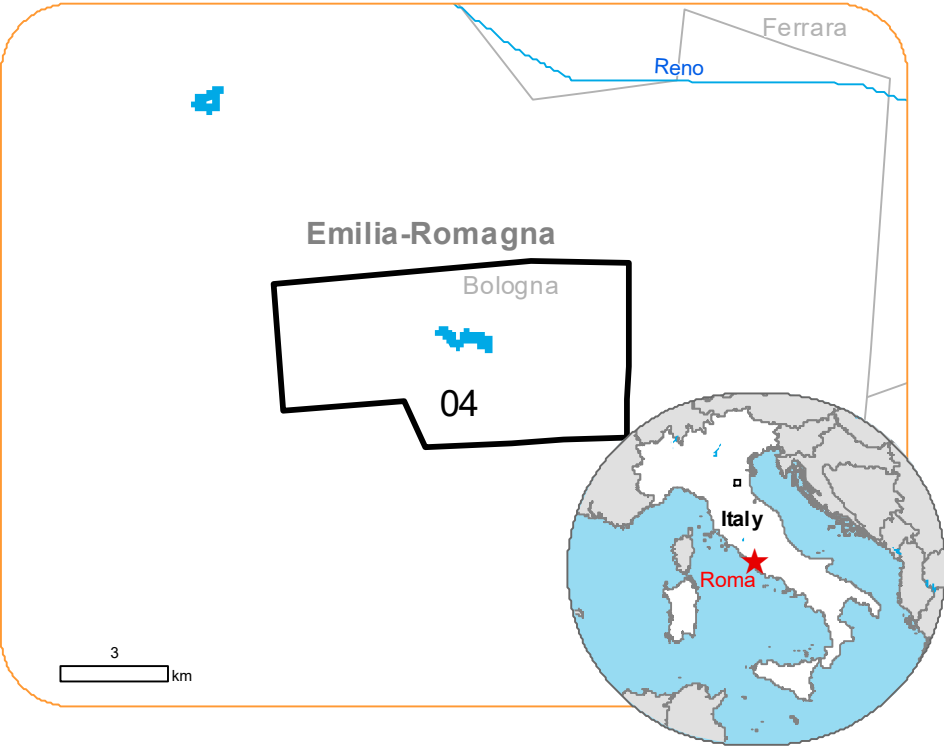


Situation as of 04/05/2023 10:15 UTC
Delineation - Overview map 01



Dike breach 2 No.
Flooded area 766.9 ha
Potentially affected population ~ 70

Potentially Affected Built-up and Transportations

Road 22.1 km
Built-Up 31 No.

Crisis Information	Facilities
Flooded Area	Long-distance pipelines or lines
Dike breach	Local pipelines or lines
General Information	Sport and recreation constructions
Area of Interest	Dump Site
Detail map	Water or Aquatic infrastructure
Administrative boundaries	Transportation
Municipality	Main road
Placenames	Local road
Placename	Track
Built-Up Area	All data displayed on the map(s), as well as the Land Use -Land Cover layers, are available in the Crisis Information Package and the Base Layer Package (for reference data). All products and data are also available for download on the activation webpage.
Residential	
Non residential	
Unclassified	
Hydrography	
River	
Stream	
Lake	
Land Subject to Inundation	
Reservoir	

Event:
On the 02 May 2023, an intense phase of bad weather, with considerable rainfall, hit Emilia-Romagna, Italy. The event is on-going with river levels very high, the breaking of the Sillaro River embankment and the overflow of the Lamone River producing flooding close to the cities of Massa Lombarda and Conselice. Copernicus EMS Rapid Mapping is requested to provide initial rough estimation, flood extent and damage assessment emergency mapping.

Data sources and analysis: Pre-event image: Sentinel-2A/B (2022) (acquired on 24/11/2022 at 10:13 UTC, resolution 10.0 m).
Post-event image: Pléiades-1A/B © CNES (2023), (acquired on 04/05/2023 at 10:15 UTC, resolution 0.5 m). This image is used as background image.
All images are provided under COPERNICUS by the European Union and ESA, all rights reserved.

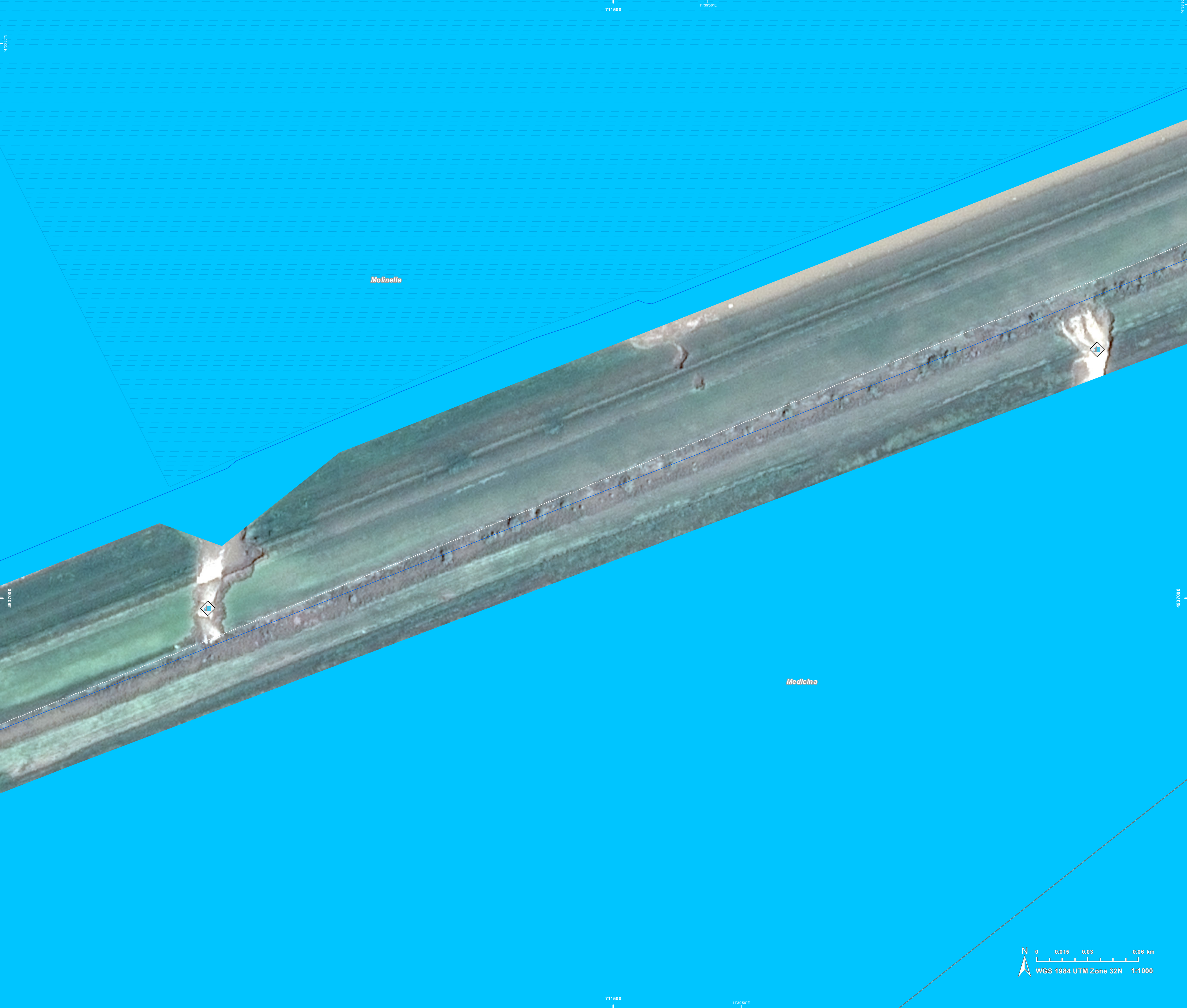
Base vector layers: OpenStreetMap © OpenStreetMap contributors (2023), Wikimapia.org, GeoNames 2015, Corine Land Cover (CLC) 2018, EuroBoundaryMap 2017 © EuroGeographics.
Inset maps: JRC 2013, GISCO 2010 © EuroGeographics, Natural Earth 2012, CCM River DB © EUJRC2007, GeoNames 2015.

Population data: GHS Population Grid © European Commission, 2022
https://ghsl.jrc.ec.europa.eu/ghs_pop2022.php

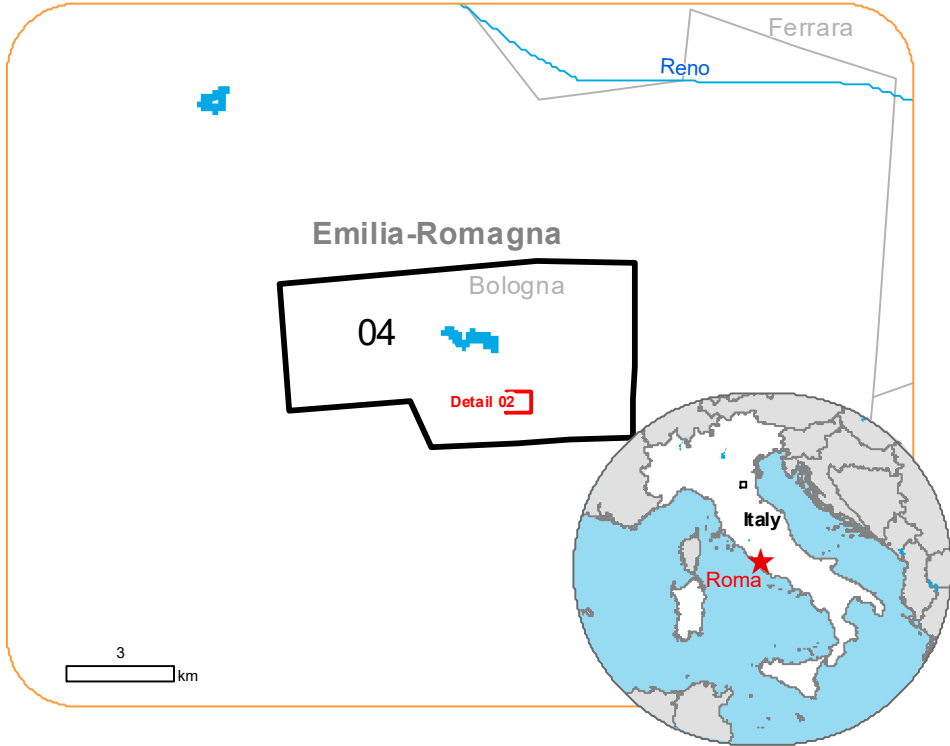
The thematic layer has been derived from post-event satellite image using a semi-automatic approach.
The scale of analysis is 1:10000. The estimated geometric accuracy (RMSE) is 2.5 m or better, from native positional accuracy of the background satellite image. The minimum mapping unit (MMU) is 100 sq. m.

Map produced by IABG released by SERTIT on the 05/05/2023.

Details on this activation and service conditions available through the QR code or at the link:
<https://emergency.copernicus.eu/EMSR659>



Situation as of 04/05/2023 10:15 UTC
Delineation - Detail map 02



Dike breach 2 No.
Flooded area 32.8 ha
4.3% of total in AOI

Potentially affected population
0
0% of total affected

Potentially Affected Built-up and Transportations

Road
0.2 km
0.2% of total affected

Built-Up
0 No.
0% of total affected

Crisis Information

Flooded Area

Dike breach

General Information

Area of Interest

Administrative boundaries

Municipality

Hydrography

Stream

Land Subject to Inundation

Transportation

Track

All data displayed on the map(s), as well as the Land Use -Land Cover layers, are available in the Crisis Information Package and the Base Layer Package (for reference data). All products and data are also available for download on the activation webpage.

Event:

On the 02 May 2023, an intense phase of bad weather, with considerable rainfall, hit Emilia-Romagna, Italy. The event is on-going with river levels very high, the breaking of the Sillaro River embankment and the overflow of the Lamone River producing flooding close to the cities of Massa Lombarda and Conselice. Copernicus EMS Rapid Mapping is requested to provide initial rough estimation, flood extent and damage assessment emergency mapping.

Data sources and analysis: Pre-event image: Sentinel-2A/B (2022) (acquired on 24/11/2022 at 10:13 UTC, resolution 10.0 m). Post-event image: Pléiades-1A/B © CNES (2023), (acquired on 04/05/2023 at 10:15 UTC, resolution 0.5 m). This image is used as background image. All images are provided under COPERNICUS by the European Union and ESA, all rights reserved.

Base vector layers: OpenStreetMap © OpenStreetMap contributors (2023), Wikimapia.org, GeoNames 2015, Corine Land Cover (CLC) 2018, EuroBoundaryMap 2017 © EuroGeographics, Inset maps: JRC 2013, GISCO 2010 © EuroGeographics, Natural Earth 2012, CCM River DB © EUJRC2007, GeoNames 2015.

Population data: GHS Population Grid © European Commission, 2022
https://ghsl.jrc.ec.europa.eu/ghs_pop2022.php

The thematic layer has been derived from post-event satellite image using a semi-automatic approach. The scale of analysis is 1:10000. The estimated geometric accuracy (RMSE) is 2.5 m or better, from native positional accuracy of the background satellite image. The minimum mapping unit (MMU) is 100 sq m.

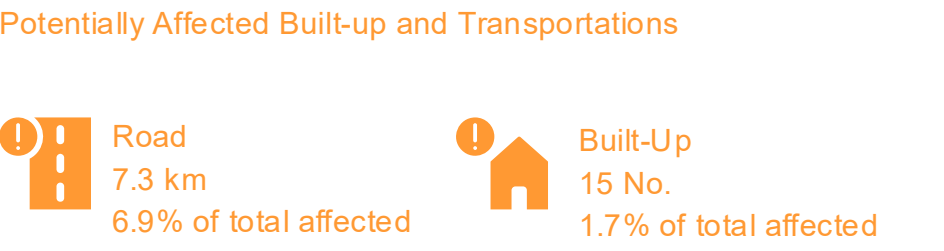
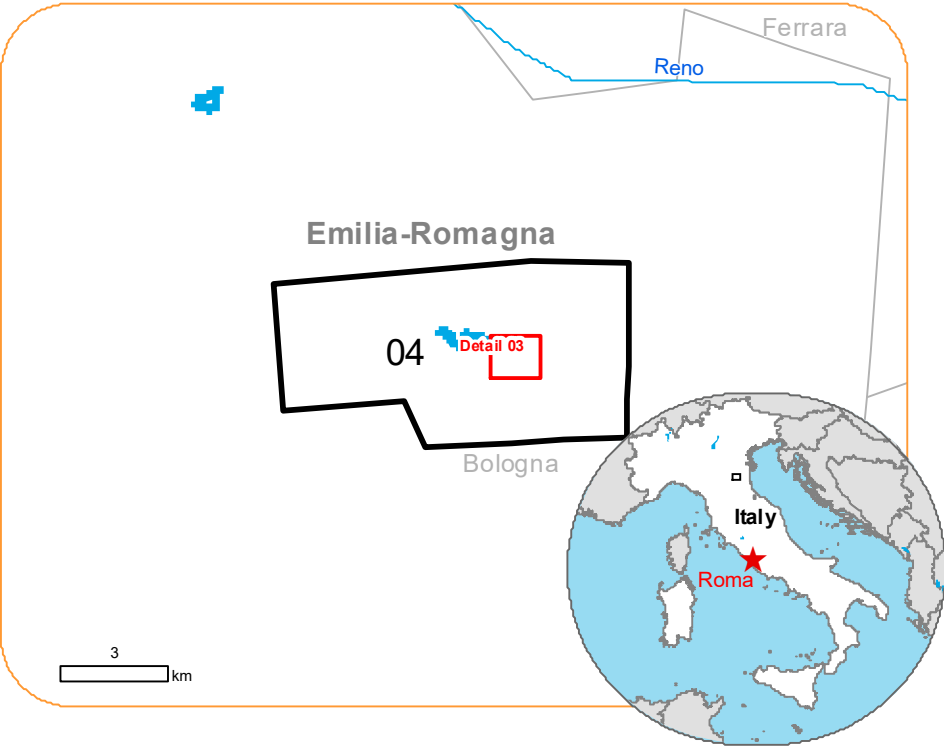
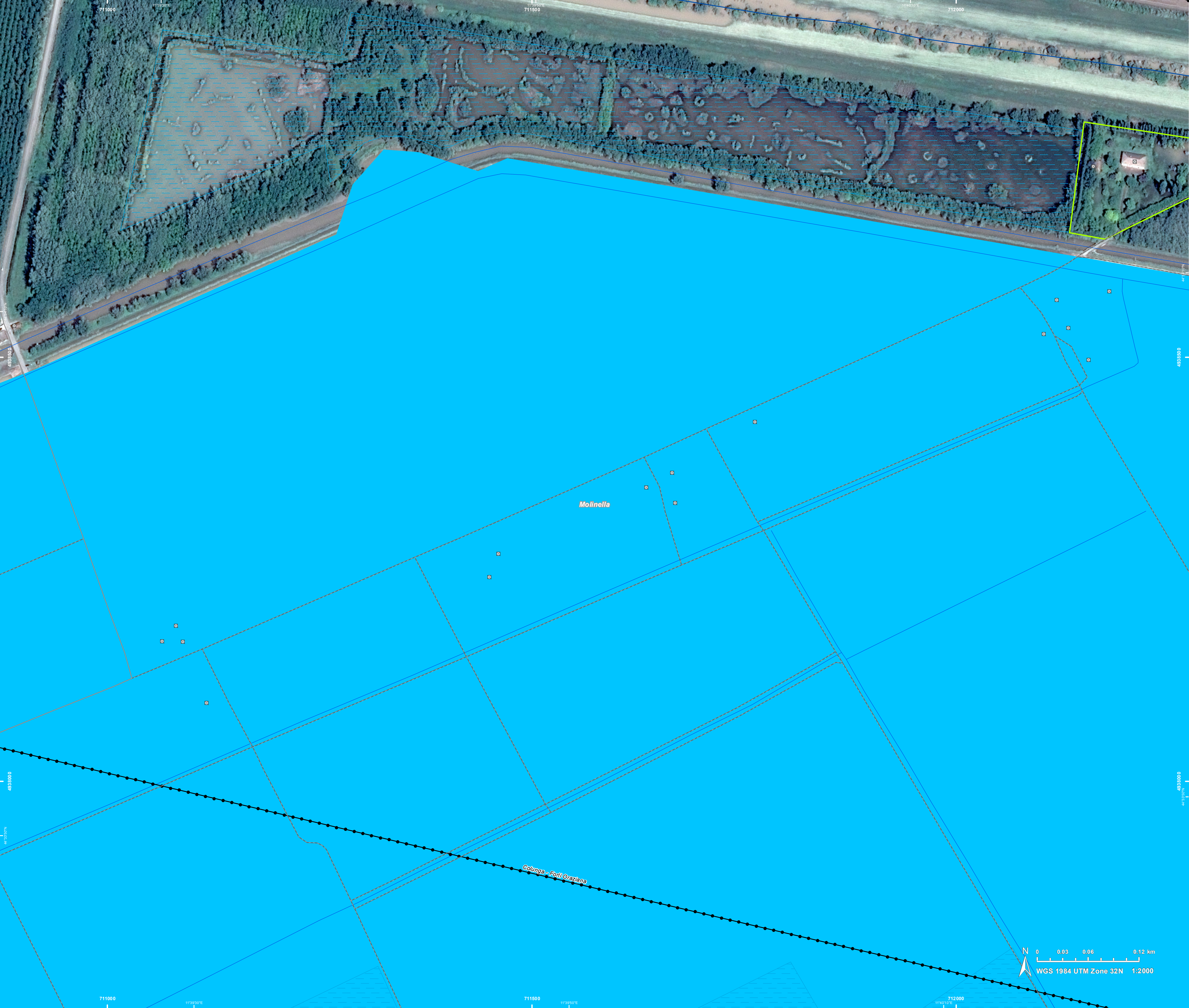
Map produced by IABG released by SERTIT on the 05/05/2023.

Details on this activation and service conditions available through the QR code or at the link:
<https://emergency.copernicus.eu/EMSR659>



PROGRAMME OF THE
EUROPEAN UNION





Crisis Information

General Information

Area of Interest

Built-Up Area

Unclassified

Hydrography

River

Stream

Land Subject to Inundation

Facilities

Long-distance pipelines or lines

Sport and recreation constructions

Transportation

Local road

Track

All data displayed on the map(s), as well as the Land Use -Land Cover layers, are available in the Crisis Information Package and the Base Layer Package (for reference data). All products and data are also available for download on the activation webpage.

Event:

On the 02 May 2023, an intense phase of bad weather, with considerable rainfall, hit Emilia-Romagna, Italy. The event is on-going with river levels very high, the breaking of the Sillaro River embankment and the overflow of the Lamone River producing flooding close to the cities of Massa Lombarda and Conselice. Copernicus EMS Rapid Mapping is requested to provide initial rough estimation, flood extent and damage assessment emergency mapping.

Data sources and analysis: Pre-event image: Sentinel-2A/B (2022) (acquired on 24/11/2022 at 10:13 UTC, resolution 10.0 m). Post-event image: Pléiades-1A/B © CNES (2023), (acquired on 04/05/2023 at 10:15 UTC, resolution 0.5 m). This image is used as background image. All images are provided under COPERNICUS by the European Union and ESA, all rights reserved.

Base vector layers: OpenStreetMap © OpenStreetMap contributors (2023), Wikimapia.org, GeoNames 2015, Corine Land Cover (CLC) 2018, EuroBoundaryMap 2017 © EuroGeographics, Inset maps:JRC 2013, GISCO 2010 © EuroGeographics, Natural Earth 2012, CCM River DB © EUJRC2007, GeoNames 2015.

Population data: GHS Population Grid © European Commission, 2022
https://ghsl.jrc.ec.europa.eu/ghs_pop2022.php

The thematic layer has been derived from post-event satellite image using a semi-automatic approach. The scale of analysis is 1:10000. The estimated geometric accuracy (RMSE) is 2.5 m or better, from native positional accuracy of the background satellite image. The minimum mapping unit (MMU) is 100 sq m.

Map produced by IABG released by SERTIT on the 05/05/2023.

Details on this activation and service conditions available through the QR code or at the link:
<https://emergency.copernicus.eu/EMSR659>

EMSR659 AOI: 04 Idice-Molinella Delineation

Consequences within the AOI				
		Unit of measurement	Affected	Total in AOI
Flooded area		ha		766.9
Dike breach		No.		2
Estimated population		Number of inhabitants	~ 70	~ 2,400
Built-up	Residential Buildings	No.	0	16
	Industrial buildings	No.	4	26
	Buildings used as places of worship and for religious activities	No.	0	4
	Cemetery	No.	0	1
	Unclassified	No.	27	834
Transportation	Secondary Road	km	0.0	7.8
	Local Road	km	1.9	22.3
	Cart Track	km	20.2	76.4
Facilities	Settling Basin	ha	0.0	0.2
	Sport and recreation constructions	ha	3.0	19.0
	Other civil engineering works not elsewhere classified	ha	0.0	0.6
	Long-distance pipelines, communication and electricity lines	km	3.2	22.6
	Local pipelines and cables	km	0.0	2.8
Land use	Arable land	ha	685.7	3,829.6
	Inland wetlands	ha	80.3	464.3
	Forests	ha	0.9	42.3
	Permanent crops	ha	0.0	4.8
	Heterogeneous agricultural areas	ha	0.0	83.3
	Other	ha	0.0	0.0

Disclaimer:

Full disclaimer and other helpful information available in the online manual:

<https://emergency.copernicus.eu/mapping/ems/online-manual-rapid-mapping-products>

© European Union / Copernicus Emergency Management Service



PROGRAMME OF THE
EUROPEAN UNION

