

Situation as of 03/06/2024 17:16 UTC
Delineation MONIT02 - Overview map 01



Flooded area 10.4 ha
Potentially affected population ~ 7500

Potentially Affected Built-up and Transportations

Water infrastructure 51.1 ha
2.9 km
Road 1.4 km

Built-Up 15.9 ha

Estimated water depth (m)	Facilities
0.15 - 0.50	Long-distance pipelines or lines
Crisis information	Local pipelines or lines
Maximum Water Extent	Water or Aquatic infrastructure
General Information	Dam
Area of Interest	Power plant
Image Footprint	Sport and recreation constructions
Administrative Boundaries	Water or Aquatic infrastructure
Province	Transportation
Municipality	Highway
Placenames	Main road
Placename	Railway
Built-Up Area	Transportation
Residential	Airfield
Hydrography	Helipad
River	Water or Aquatic infrastructure
Stream	
Lake	
Natural Spring	
Reservoir	
River	

Event Starting in the early morning of 31st May 2024, continuous rain (about 50 to 150 l/m2 in 48 hours) is expected in wide areas of Southern and Eastern Germany (potentially affected states: Bavaria, Baden-Wuerttemberg, Hesse, Saxony, Saxony-Anhalt, Thuringia). Although uncertainties of the forecast still have to be considered, competent authorities expect flooding of different severities in wide areas. Following formal flash flood EFAS notifications, Copernicus EMS Rapid Mapping is requested to provide initial rough estimation, flood extent and damage assessment emergency mapping for some potentially affected regions.

Data sources and analysis Pre-event image: Sentinel-2A/B (2024) (acquired on 25/06/2024 at 10:16 UTC, resolution 10 m). This image is used as background image.

Post-event image: Sentinel-1A/B (2024) (acquired on 03/06/2024 at 17:16 UTC, resolution 20 m). All images are provided under COPERNICUS by the European Union and ESA, all rights reserved.

The thematic layer has been derived from post-event satellite image using a semi-automatic approach. Please be aware that the thematic accuracy might be lower in urban and forested areas due to inherent limitations of the SAR analysis technique.

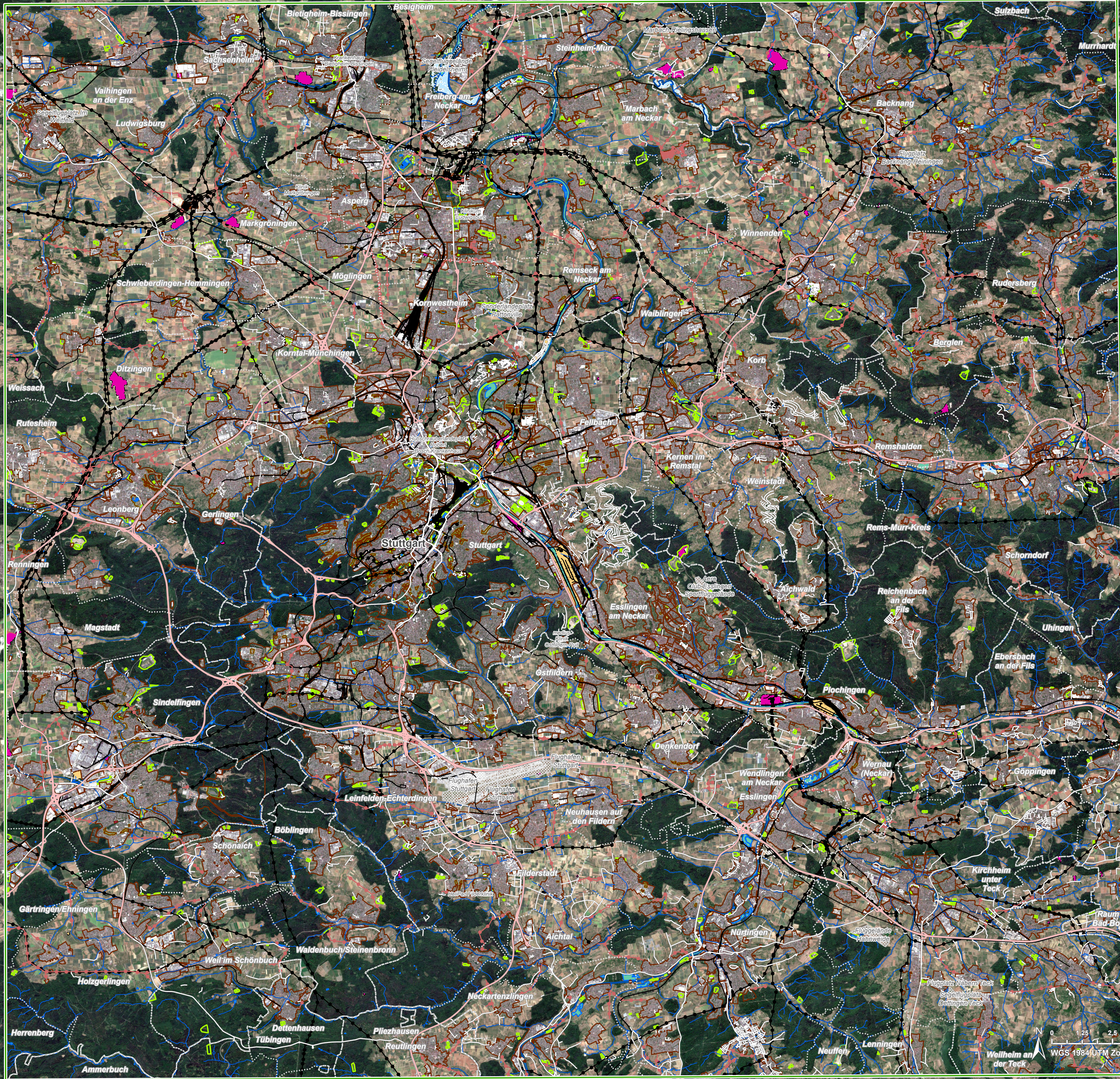
The water extent and water depth information is based on the analysis of post-event satellite imagery and on Digital Elevation Model data.

The maximum water extent corresponds to the water observed in all previous products (cumulative analysis). The flooded area corresponds to the water observed in the most recent satellite imagery, excluding the permanent water.

Water depth values are not calculated outside the observed event areas.

Map produced by ITHACA released by e-GEOS on the 04/06/2024.

Details on this activation and service conditions available through the QR code or at the link: <https://rapidmapping.emergency.copernicus.eu/EMSR728>



Consequences within the AOI				
		Unit of measurement	Affected	Total in AOI
Flooded area*		ha		10,4
Water Extent**		ha		1.126,2
Maximum Water Extent***		ha		1.260,8
Permanent Water		ha		1.115,9
Estimated population		Number of inhabitants	~ 7.500	2.200 Mio.
Built-up	Residential Buildings	ha	15,9	40.306,5
Transportation	Airfield runways	ha	0	500,8
	Navigable canals	ha	0,9	2,0
	Helipad	ha	0	0,9
	Highways	km	0,7	655,0
	Primary Road	km	0,5	1.173,7
	Long-distance railways	km	2,5	1.711,0
Facilities	Settling Basin	ha	51,1	316,9
	Power plant constructions	ha	1,7	369,4
	Sport and recreation constructions	ha	48,2	2.542,8
	Settling Basin	km	0	2,1
	Long-distance pipelines, communication and electricity lines	km	5,7	988,3
	Local pipelines and cables	km	1,8	464,4
Land use	Dams	km	2,9	6,1
	Other	ha	559,2	49.750,9
	Pastures	ha	179,6	14.846,5
	Forests	ha	171,8	57.710,3
	Arable land	ha	92,0	55.893,4
	Permanent crops	ha	61,9	24.336,6
	Shrub and/or herbaceous vegetation association	ha	38,9	690,9
	Heterogeneous agricultural areas	ha	22,9	1.481,3

* Corresponds to the water observed in the most recent satellite imagery, excluding permanent water

** Corresponds to the water observed in the most recent satellite imagery, including permanent water

*** Corresponds to the water observed in all previous products and in the most recent satellite imagery (cumulative analysis)

Disclaimer:

Full disclaimer and other helpful information available in the online manual:

<https://emergency.copernicus.eu/mapping/ems/online-manual-rapid-mapping-products>

© European Union / Copernicus Emergency Management Service

Data Access:

All data displayed on the map(s), as well as the Physiography and Land Use - Land Cover layers, are available in the Crisis Information Package and the Base Layer Package (for reference data).

The table above is available in editable format in the Crisis Information Package.

All products and data are also available for download on the portal.

Access to the portal



Estimated Population:

Estimated population is based on Copernicus Global Human Settlement Layer (GHSL) dataset.

Additional population datasets and analysis are available in the summary table.

Data Sources:

Base vector layers: OpenStreetMap © OpenStreetMap contributors (2024), Wikimapia.org, GeoNames 2015,

Inset maps: JRC 2013, GISCO 2010 © EuroGeographics, Natural Earth 2012, CCM River DB © EUJRC2007, GeoNames 2015.

Digital Elevation Model: Digital Terrain Model 10 m, GeoBasis-DE/BKG (2024).



PROGRAMME OF THE
EUROPEAN UNION

