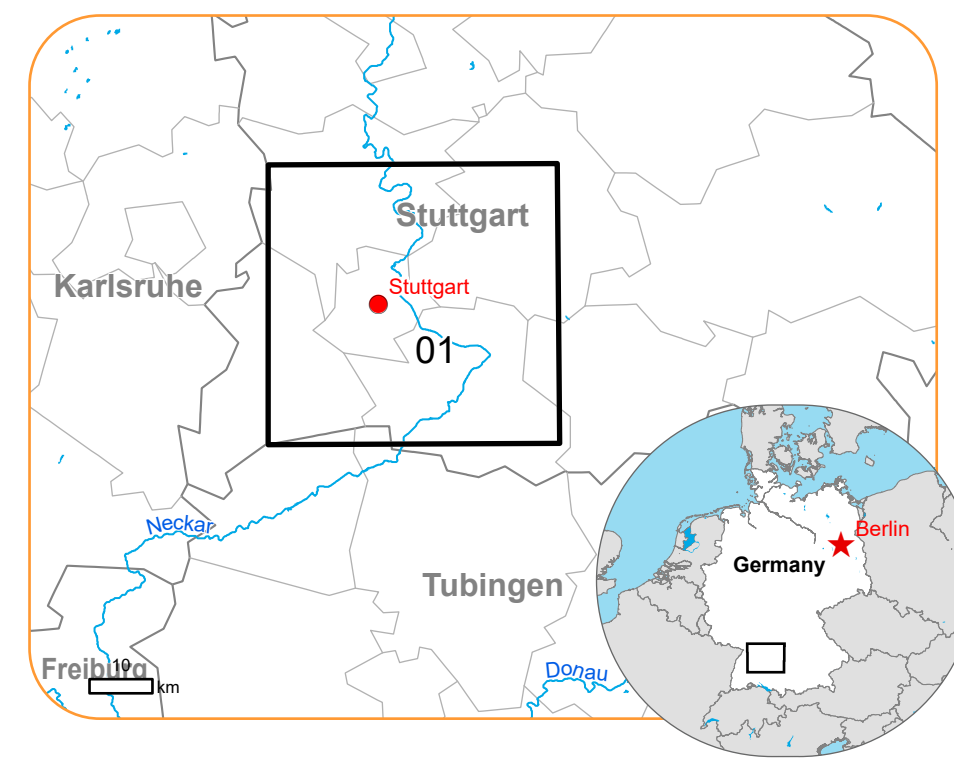


EMSR728 - AOI01
Flood in Germany
STUTTART

Situation as of 01/06/2024 05:43 UTC
Delineation - Overview map 01






Flooded area 13.8 ha




Potentially affected population
~ 10000


Potentially Affected Built-up and Transportations




Water infrastructure
49.4 ha
2.7 km



Road
1.2 km



Railway
2.5 km



Built-Up
13.4 ha

Estimated water depth (m)

- 0.15 - 0.50
- 0.50 - 1.00
- 1.00 - 2.00
- 2.00 - 4.00
- 4.00 - 6.00

Natural features

- Natural Spring
- Reservoir
- River

Facilities

- Long-distance pipelines or lines
- Local pipelines or lines
- Water or Aquatic infrastructure
- Dam
- Power plant
- Sport and recreation constructions
- Water or Aquatic infrastructure

General Information

- Area of Interest
- Detail map
- Image Footprint
- Not Analysed

Administrative Boundaries

- Province
- Municipality

Placenames

- Placename

Built-Up Area

- Residential

Hydrography

- River
- Stream
- Lake

Transportation

- Highway
- Main road
- Railway

Transportation

- Airfield
- Helipad
- Water or Aquatic infrastructure

Event Starting in the early morning of 31st May 2024, continuous rain (about 50 to 150 l/m2 in 48 hours) is expected in wide areas of Southern and Eastern Germany (potentially affected states: Bavaria, Baden-Wuerttemberg, Hesse, Saxony, Saxony-Anhalt, Thuringia). Although uncertainties of the forecast still have to be considered, competent authorities expect flooding of different severities in wide areas. Following formal flash flood EFAS notifications, Copernicus EMS Rapid Mapping is requested to provide initial rough estimation, flood extent and damage assessment emergency mapping for some potentially affected regions.

Data sources and analysis Pre-event image: Sentinel-2A/B (2024) (acquired on 25/06/2024 at 10:16 UTC, resolution 10 m). This image is used as background image.

Post-event image: COSMO-SkyMed © AS (2024), distributed by e-GEOS S.p.A. (acquired on 01/06/2024 at 05:06 UTC, resolution 3 m).

PAZ satellite image © Hisdesat Servicios Estratégicos S.A., 2021 (acquired on 01/06/2024 at 05:43 UTC, resolution 3 m).

All images are provided under COPERNICUS by the European Union and ESA, all rights reserved.

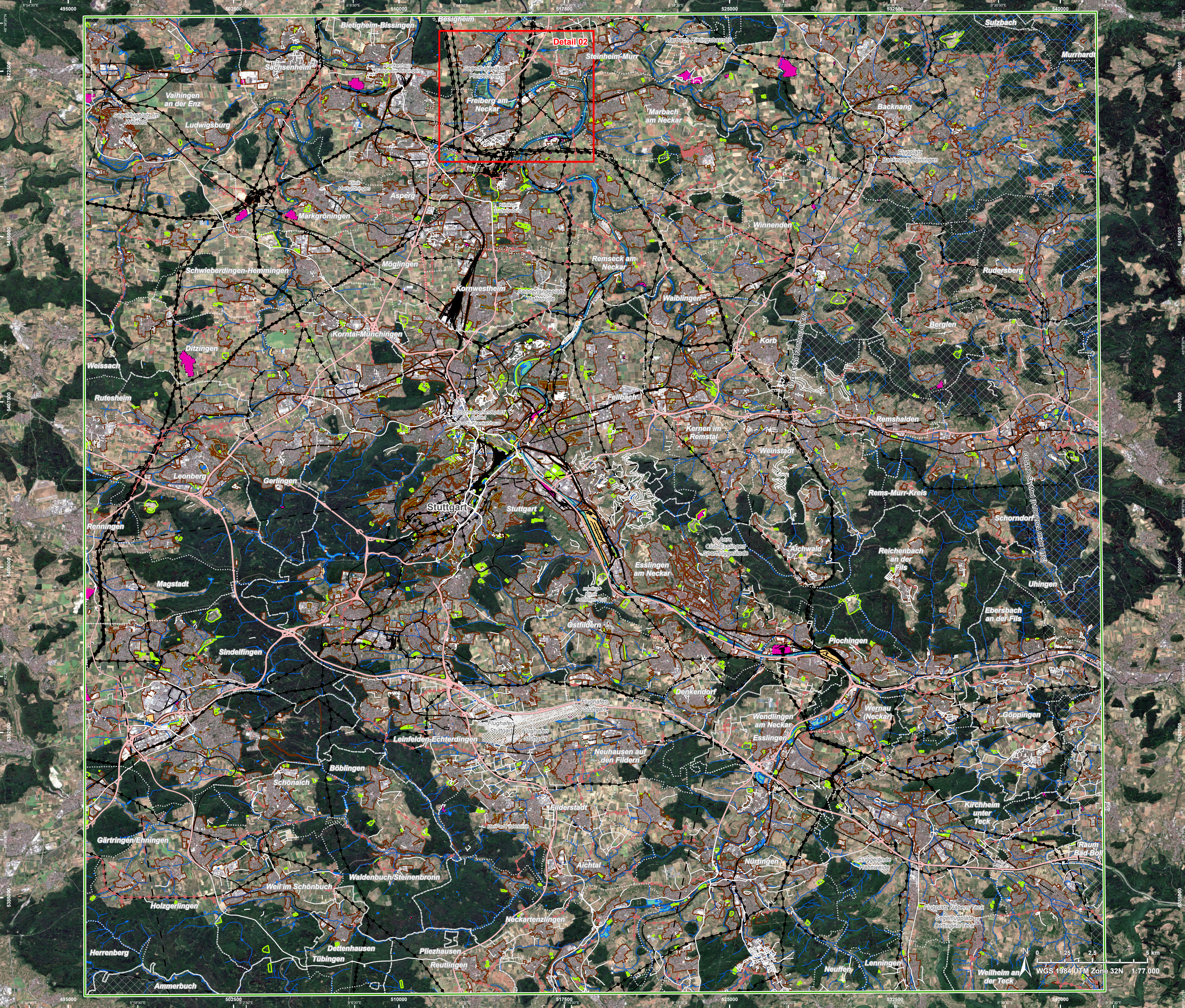
The thematic layer has been derived from post-event satellite image using a semi-automatic approach. Please be aware that the thematic accuracy might be lower in urban and forested areas due to inherent limitations of the SAR analysis technique.

The water extent and water depth information is based on the analysis of post-event satellite imagery and on Digital Elevation Model data. The flooded area corresponds to the water observed in the most recent satellite imagery, excluding the permanent water.

Water depth values are not calculated outside the observed event areas.

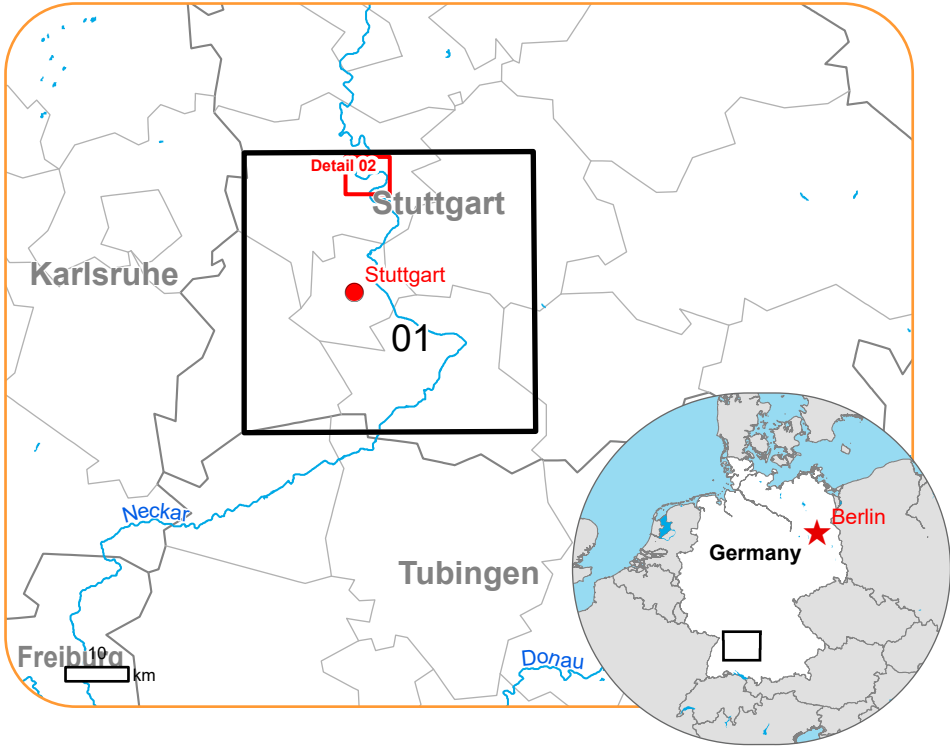
Map produced by ITHACA released by e-GEOS on the 04/06/2024.

Details on this activation and service conditions available through the QR code or at the link: <https://rapidmapping.emergency.copernicus.eu/EMSR728>



5422500 5415000 5407500 5400000 5392500 5385000 5377500 5370000 5362500 5355000 5347500 5340000 5332500 5325000 5317500 5310000 5302500 5295000 5287500 5280000 5272500 5265000 5257500 5250000 5242500 5235000 5227500 5220000 5212500 5205000 5197500 5190000 5182500 5175000 5167500 5160000 5152500 5145000 5137500 5130000 5122500 5115000 5107500 5100000 5092500 5085000 5077500 5070000 5062500 5055000 5047500 5040000 5032500 5025000 5017500 5010000 5002500 4995000 4987500 4980000 4972500 4965000 4957500 4950000

9°54'30"E 9°53'00"E 9°51'30"E 9°50'00"E 9°48'30"E 9°47'00"E 9°45'30"E 9°44'00"E 9°42'30"E 9°41'00"E 9°39'30"E 9°38'00"E 9°36'30"E 9°35'00"E 9°33'30"E 9°32'00"E 9°30'30"E 9°29'00"E 9°27'30"E 9°26'00"E 9°24'30"E 9°23'00"E 9°21'30"E 9°20'00"E 9°18'30"E 9°17'00"E 9°15'30"E 9°14'00"E 9°12'30"E 9°11'00"E 9°09'30"E 9°08'00"E 9°06'30"E 9°05'00"E 9°03'30"E 9°02'00"E 9°00'30"E 9°00'00"E 8°58'30"E 8°57'00"E 8°55'30"E 8°54'00"E 8°52'30"E 8°51'00"E 8°49'30"E 8°48'00"E 8°46'30"E 8°45'00"E 8°43'30"E 8°42'00"E 8°40'30"E 8°39'00"E 8°37'30"E 8°36'00"E 8°34'30"E 8°33'00"E 8°31'30"E 8°30'00"E 8°28'30"E 8°27'00"E 8°25'30"E 8°24'00"E 8°22'30"E 8°21'00"E 8°19'30"E 8°18'00"E 8°16'30"E 8°15'00"E 8°13'30"E 8°12'00"E 8°10'30"E 8°09'00"E 8°07'30"E 8°06'00"E 8°04'30"E 8°03'00"E 8°01'30"E 8°00'00"E 7°58'30"E 7°57'00"E 7°55'30"E 7°54'00"E 7°52'30"E 7°51'00"E 7°49'30"E 7°48'00"E 7°46'30"E 7°45'00"E 7°43'30"E 7°42'00"E 7°40'30"E 7°39'00"E 7°37'30"E 7°36'00"E 7°34'30"E 7°33'00"E 7°31'30"E 7°30'00"E 7°28'30"E 7°27'00"E 7°25'30"E 7°24'00"E 7°22'30"E 7°21'00"E 7°19'30"E 7°18'00"E 7°16'30"E 7°15'00"E 7°13'30"E 7°12'00"E 7°10'30"E 7°09'00"E 7°07'30"E 7°06'00"E 7°04'30"E 7°03'00"E 7°01'30"E 7°00'00"E 6°58'30"E 6°57'00"E 6°55'30"E 6°54'00"E 6°52'30"E 6°51'00"E 6°49'30"E 6°48'00"E 6°46'30"E 6°45'00"E 6°43'30"E 6°42'00"E 6°40'30"E 6°39'00"E 6°37'30"E 6°36'00"E 6°34'30"E 6°33'00"E 6°31'30"E 6°30'00"E 6°28'30"E 6°27'00"E 6°25'30"E 6°24'00"E 6°22'30"E 6°21'00"E 6°19'30"E 6°18'00"E 6°16'30"E 6°15'00"E 6°13'30"E 6°12'00"E 6°10'30"E 6°09'00"E 6°07'30"E 6°06'00"E 6°04'30"E 6°03'00"E 6°01'30"E 6°00'00"E 5°58'30"E 5°57'00"E 5°55'30"E 5°54'00"E 5°52'30"E 5°51'00"E 5°49'30"E 5°48'00"E 5°46'30"E 5°45'00"E 5°43'30"E 5°42'00"E 5°40'30"E 5°39'00"E 5°37'30"E 5°36'00"E 5°34'30"E 5°33'00"E 5°31'30"E 5°30'00"E 5°28'30"E 5°27'00"E 5°25'30"E 5°24'00"E 5°22'30"E 5°21'00"E 5°19'30"E 5°18'00"E 5°16'30"E 5°15'00"E 5°13'30"E 5°12'00"E 5°10'30"E 5°09'00"E 5°07'30"E 5°06'00"E 5°04'30"E 5°03'00"E 5°01'30"E 5°00'00"E 4°58'30"E 4°57'00"E 4°55'30"E 4°54'00"E 4°52'30"E 4°51'00"E 4°49'30"E 4°48'00"E 4°46'30"E 4°45'00"E 4°43'30"E 4°42'00"E 4°40'30"E 4°39'00"E 4°37'30"E 4°36'00"E 4°34'30"E 4°33'00"E 4°31'30"E 4°30'00"E 4°28'30"E 4°27'00"E 4°25'30"E 4°24'00"E 4°22'30"E 4°21'00"E 4°19'30"E 4°18'00"E 4°16'30"E 4°15'00"E 4°13'30"E 4°12'00"E 4°10'30"E 4°09'00"E 4°07'30"E 4°06'00"E 4°04'30"E 4°03'00"E 4°01'30"E 4°00'00"E 3°58'30"E 3°57'00"E 3°55'30"E 3°54'00"E 3°52'30"E 3°51'00"E 3°49'30"E 3°48'00"E 3°46'30"E 3°45'00"E 3°43'30"E 3°42'00"E 3°40'30"E 3°39'00"E 3°37'30"E 3°36'00"E 3°34'30"E 3°33'00"E 3°31'30"E 3°30'00"E 3°28'30"E 3°27'00"E 3°25'30"E 3°24'00"E 3°22'30"E 3°21'00"E 3°19'30"E 3°18'00"E 3°16'30"E 3°15'00"E 3°13'30"E 3°12'00"E 3°10'30"E 3°09'00"E 3°07'30"E 3°06'00"E 3°04'30"E 3°03'00"E 3°01'30"E 3°00'00"E 2°58'30"E 2°57'00"E 2°55'30"E 2°54'00"E 2°52'30"E 2°51'00"E 2°49'30"E 2°48'00"E 2°46'30"E 2°45'00"E 2°43'30"E 2°42'00"E 2°40'30"E 2°39'00"E 2°37'30"E 2°36'00"E 2°34'30"E 2°33'00"E 2°31'30"E 2°30'00"E 2°28'30"E 2°27'00"E 2°25'30"E 2°24'00"E 2°22'30"E 2°21'00"E 2°19'30"E 2°18'00"E 2°16'30"E 2°15'00"E 2°13'30"E 2°12'00"E 2°10'30"E 2°09'00"E 2°07'30"E 2°06'00"E 2°04'30"E 2°03'00"E 2°01'30"E 2°00'00"E 1°58'30"E 1°57'00"E 1°55'30"E 1°54'00"E 1°52'30"E 1°51'00"E 1°49'30"E 1°48'00"E 1°46'30"E 1°45'00"E 1°43'30"E 1°42'00"E 1°40'30"E 1°39'00"E 1°37'30"E 1°36'00"E 1°34'30"E 1°33'00"E 1°31'30"E 1°30'00"E 1°28'30"E 1°27'00"E 1°25'30"E 1°24'00"E 1°22'30"E 1°21'00"E 1°19'30"E 1°18'00"E 1°16'30"E 1°15'00"E 1°13'30"E 1°12'00"E 1°10'30"E 1°09'00"E 1°07'30"E 1°06'00"E 1°04'30"E 1°03'00"E 1°01'30"E 1°00'00"E 0°58'30"E 0°57'00"E 0°55'30"E 0°54'00"E 0°52'30"E 0°51'00"E 0°49'30"E 0°48'00"E 0°46'30"E 0°45'00"E 0°43'30"E 0°42'00"E 0°40'30"E 0°39'00"E 0°37'30"E 0°36'00"E 0°34'30"E 0°33'00"E 0°31'30"E 0°30'00"E 0°28'30"E 0°27'00"E 0°25'30"E 0°24'00"E 0°22'30"E 0°21'00"E 0°19'30"E 0°18'00"E 0°16'30"E 0°15'00"E 0°13'30"E 0°12'00"E 0°10'30"E 0°09'00"E 0°07'30"E 0°06'00"E 0°04'30"E 0°03'00"E 0°01'30"E 0°00'00"E



Estimated water depth (m)	Facilities
0.15 - 0.50	Long-distance pipelines or lines
0.50 - 1.00	Local pipelines or lines
1.00 - 2.00	Dam
2.00 - 4.00	Power plant
4.00 - 6.00	Sport and recreation constructions
	Water or Aquatic infrastructure
	Transportation
	Highway
	Main road
	Railway
	Transportation
	Airfield
	Water or Aquatic infrastructure

Event Starting in the early morning of 31st May 2024, continuous rain (about 50 to 150 l/m2 in 48 hours) is expected in wide areas of Southern and Eastern Germany (potentially affected states: Bavaria, Baden-Wuerttemberg, Hesse, Saxony, Saxony-Anhalt, Thuringia). Although uncertainties of the forecast still have to be considered, competent authorities expect flooding of different severities in wide areas. Following formal flash flood EFAS notifications, Copernicus EMS Rapid Mapping is requested to provide initial rough estimation, flood extent and damage assessment emergency mapping for some potentially affected regions.

Data sources and analysis: Pre-event image: Sentinel-2A/B (2024) (acquired on 25/06/2024 at 10:16 UTC, resolution 10 m). This image is used as background image.

Post-event image: COSMO-SkyMed © AS (2024), distributed by e-GEOS S.p.A. (acquired on 01/06/2024 at 05:06 UTC, resolution 3 m).

PAZ satellite image © Hisdesat Servicios Estratégicos S.A., 2021 (acquired on 01/06/2024 at 05:43 UTC, resolution 3 m).

All images are provided under COPERNICUS by the European Union and ESA, all rights reserved.

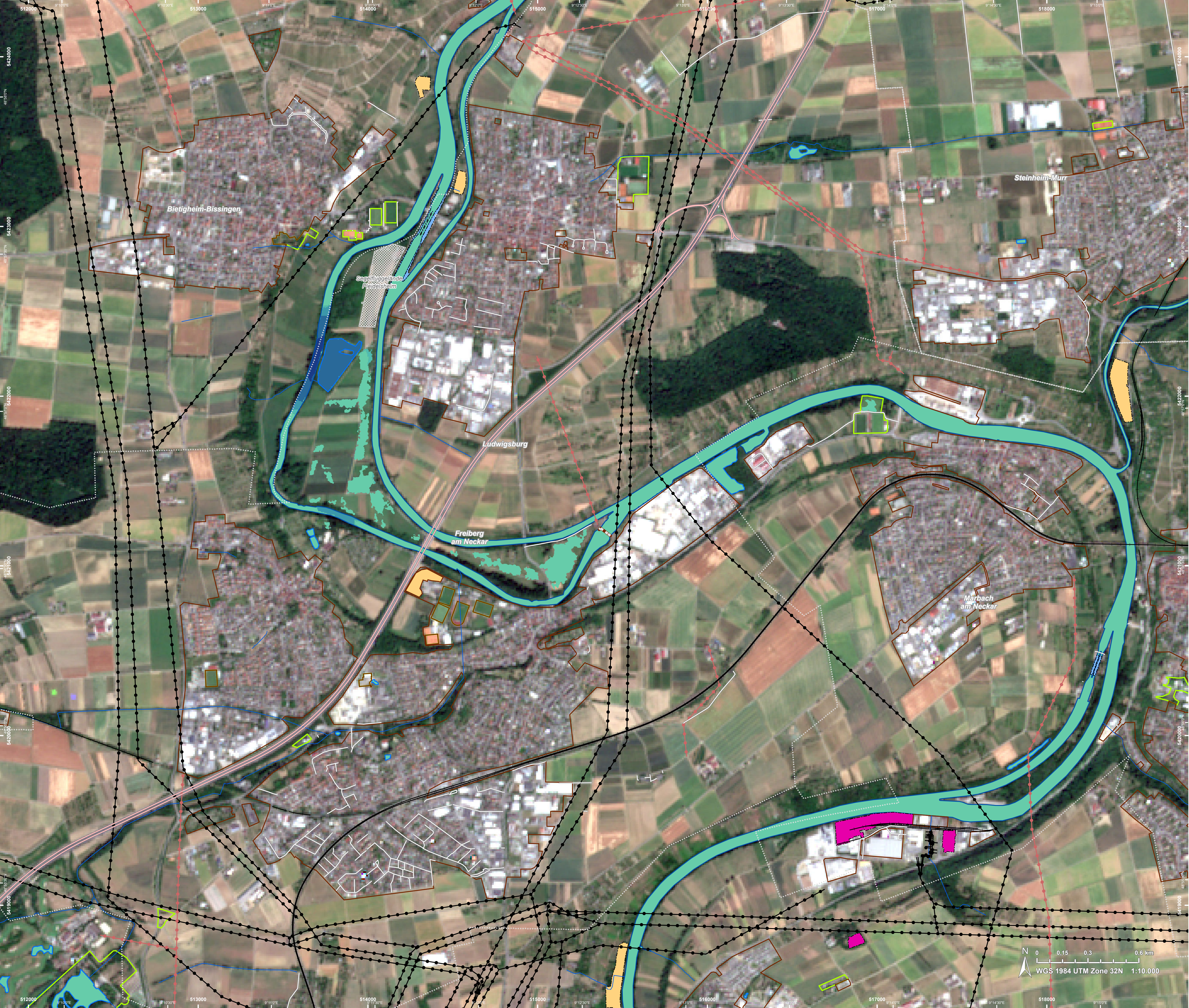
The thematic layer has been derived from post-event satellite image using a semi-automatic approach. Please be aware that the thematic accuracy might be lower in urban and forested areas due to inherent limitations of the SAR analysis technique.

The water extent and water depth information is based on the analysis of post-event satellite imagery and on Digital Elevation Model data. The flooded area corresponds to the water observed in the most recent satellite imagery, excluding the permanent water.

Water depth values are not calculated outside the observed event areas.

Map produced by ITHACA released by e-GEOS on the 04/06/2024.

Details on this activation and service conditions available through the QR code or at the link: <https://rapidmapping.emergency.copernicus.eu/EMSR728>



Consequences within the AOI				
		Unit of measurement	Affected	Total in AOI
Flooded area*		ha		13.8
Water Extent**		ha		1.060.4
Permanent Water		ha		1.046.5
Estimated population		Number of inhabitants	~ 10.000	1.800 Mio.
Built-up	Residential Buildings	ha	13.4	40.306.5
Transportation	Airfield runways	ha	0	500.8
	Navigable canals	ha	0.9	2.0
	Helipad	ha	0	0.9
	Highways	km	0.7	655.0
	Primary Road	km	0.5	1.173.7
	Long-distance railways	km	2.5	1.711.0
Facilities	Settling Basin	ha	49.4	316.9
	Power plant constructions	ha	1.2	369.4
	Sport and recreation constructions	ha	48.2	2.542.8
	Settling Basin	km	0	2.1
	Long-distance pipelines, communication and electricity lines	km	5.5	988.3
	Local pipelines and cables	km	1.7	464.4
	Dams	km	2.7	6.1
Land use	Other	ha	536.3	49.750.9
	Forests	ha	167.8	57.710.3
	Pastures	ha	157.4	14.846.5
	Arable land	ha	82.7	55.893.4
	Permanent crops	ha	53.8	24.336.6
	Shrub and/or herbaceous vegetation association	ha	38.9	690.9
	Heterogeneous agricultural areas	ha	23.3	1.481.3

* Corresponds to the water observed in the most recent satellite imagery, excluding permanent water

** Corresponds to the water observed in the most recent satellite imagery, including permanent water

Disclaimer:

Full disclaimer and other helpful information available in the online manual:

<https://emergency.copernicus.eu/mapping/ems/online-manual-rapid-mapping-products>

© European Union / Copernicus Emergency Management Service

Data Access:

All data displayed on the map(s), as well as the Physiography and Land Use - Land Cover layers, are available in the Crisis Information Package and the Base Layer Package (for reference data).

The table above is available in editable format in the Crisis Information Package.

All products and data are also available for download on the portal.

Estimated Population:

Estimated population is based on Copernicus Global Human Settlement Layer (GHSL) dataset.

Additional population datasets and analysis are available in the summary table.

Data Sources:

Base vector layers: OpenStreetMap © OpenStreetMap contributors (2024), Wikimapia.org, GeoNames 2015, Corine Land Cover (CLC) 2018, EuroBoundaryMap 2017 ©EuroGeographics.

Inset maps: JRC 2013, GISCO 2010 © EuroGeographics, Natural Earth 2012, CCM River DB © EUJRC2007, GeoNames 2015.

Digital Elevation Model: Digital Terrain Model 10 m, GeoBasis-DE/BKG (2024).

Access to the portal



PROGRAMME OF THE
EUROPEAN UNION

