



EMSR728 - AOI03
Flood in Germany
REGENSBURG

Situation as of 04/06/2024 05:19 UTC
Delineation MONIT02 - Overview map 01



Flooded area
746.9 ha



Potentially affected
population
~ 2,700

Potentially Affected Built-up and Transportations



Built-up
20.4 ha



Road
65.7 km



Railway
2 km

Estimated water depth (m)

- 0.15 - 0.50
- 0.50 - 1.00
- 1.00 - 2.00
- 2.00 - 4.00

River

Facilities

- Long-distance pipelines or lines
- Water or Aquatic infrastructure
- Dam
- Mining or extraction site
- Water Well
- Power plant
- Sport and recreation constructions
- Dump Site
- Water or Aquatic infrastructure
- Dam

General Information

- Area of Interest
- Detail map
- Image Footprint
- Not Analysed

Administrative Boundaries

- Province
- Municipality

Placenames

- Placename

Built-Up Area

- Residential
- Non residential
- School, university and research buildings
- Hospital or institutional care buildings
- Military

Hydrography

- River
- Stream
- Lake

Transportation

- Highway
- Main road
- Railway
- Airfield runway
- Navigable canal

Transportation

- Airfield
- Helipad
- Harbour
- Water or Aquatic infrastructure

Full table available in the vector package

Event: Starting in the early morning of 31st May 2024, continuous rain (about 50 to 150 l/m² in 48 hours) is expected in wide areas of Southern and Eastern Germany (potentially affected states: Bavaria, Baden-Wuerttemberg, Hesse, Saxony, Saxony-Anhalt, Thuringia). Although uncertainties of the forecast still have to be considered, competent authorities expect flooding of different severities in wide areas. Following formal flash flood EFAS notifications, Copernicus EMS Rapid Mapping is requested to provide initial rough estimation, flood extent and damage assessment emergency mapping for some potentially affected regions.

Data sources and analysis: Pre-event image: Sentinel-2A (2024) (acquired on 27/04/2024 at 10:17 UTC, resolution 10.0 m). This image is used as background image.

Post-event image: TerraSar-X © Infoterra GmbH (acquired on 04/06/2024 at 05:19 UTC, resolution 6.6 m).
All images are provided under COPERNICUS by the European Union and ESA, all rights reserved.

The thematic layer has been derived from post-event satellite image using a semi-automatic approach. Please be aware that the thematic accuracy might be lower in urban and forested areas due to inherent limitations of the SAR analysis technique.

The water extent and water depth information is based on the analysis of post-event satellite imagery and on Digital Elevation Model data. The flooded area corresponds to the water observed in the most recent satellite imagery, excluding the permanent water.

Water depth values are not calculated outside the observed event areas.

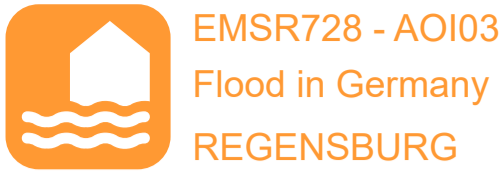
Map produced by GAF AG released by e-GEOS on the 05/06/2024.

Details on this activation and service conditions available through the QR code or at the link: <https://rapidmapping.emergency.copernicus.eu/EMSR728>

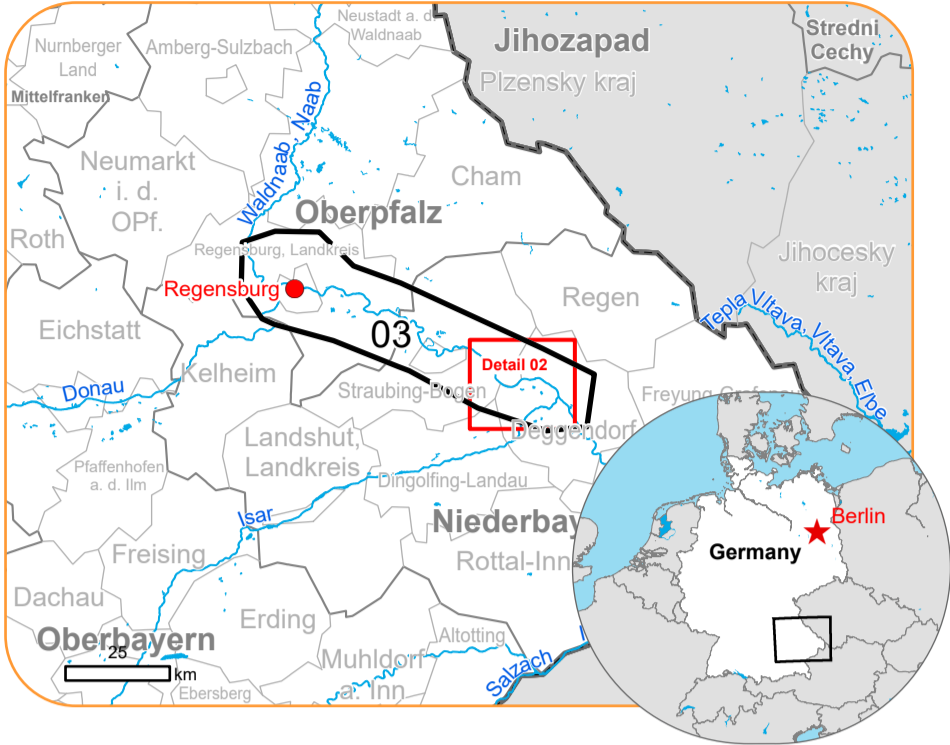


PROGRAMME OF THE
EUROPEAN UNION





Situation as of 04/06/2024 05:19 UTC
Delineation MONIT02 - Detail map 02



Estimated water depth (m)	River
0.15 - 0.50	Facilities
0.50 - 1.00	Long-distance pipelines or lines
1.00 - 2.00	Water or Aquatic infrastructure
2.00 - 4.00	Dam
	Mining or extraction site
	Water Well
	Power plant
	Sport and recreation constructions
	Water or Aquatic infrastructure
	Dam
	Transportation
	Highway
	Main road
	Railway
	Airfield runway
	Transportation
	Airfield
	Helipad
	Harbour

Full table available in the vector package

Event: Starting in the early morning of 31st May 2024, continuous rain (about 50 to 150 l/m² in 48 hours) is expected in wide areas of Southern and Eastern Germany (potentially affected states: Bavaria, Baden-Wuerttemberg, Hesse, Saxony, Saxony-Anhalt, Thuringia). Although uncertainties of the forecast still have to be considered, competent authorities expect flooding of different severities in wide areas. Following formal flash flood EFAS notifications, Copernicus EMS Rapid Mapping is requested to provide initial rough estimation, flood extent and damage assessment emergency mapping for some potentially affected regions.

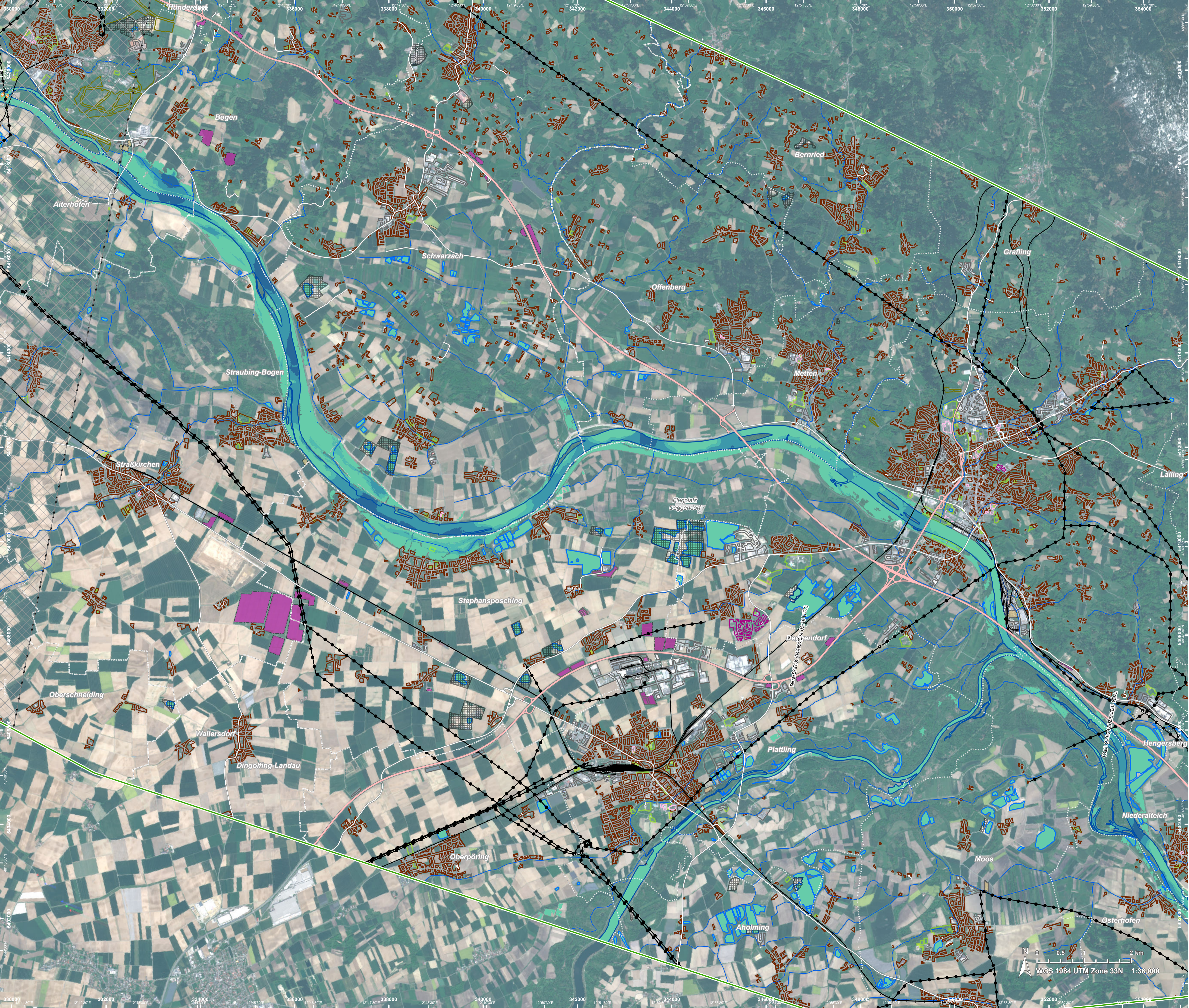
Data sources and analysis: Pre-event image Sentinel-2A (2024) (acquired on 27/04/2024 at 10:17 UTC, resolution 10.0 m). This image is used as background image.
Post-event image: TerraSar-X © Infoterra GmbH (acquired on 04/06/2024 at 05:19 UTC, resolution 6.6 m).
All images are provided under COPERNICUS by the European Union and ESA, all rights reserved.

The thematic layer has been derived from post-event satellite image using a semi-automatic approach. Please be aware that the thematic accuracy might be lower in urban and forested areas due to inherent limitations of the SAR analysis technique.

The water extent and water depth information is based on the analysis of post-event satellite imagery and on Digital Elevation Model data. The flooded area corresponds to the water observed in the most recent satellite imagery, excluding the permanent water.

Map produced by GAF AG released by e-GEOS on the 05/06/2024.

Details on this activation and service conditions available through the QR code or at the link: <https://rapidmapping.emergency.copernicus.eu/EMSR728>



Consequences within the AOI		Unit of measurement	Affected	Total in AOI
Flooded area*		ha		746.9
Water Extent**		ha		5,444.6
Maximum Water Extent***		ha		6,116.9
Permanent Water		ha		4,697.7
Estimated population	Number of inhabitants		~ 2,700	~ 470,000
Built-up	Residential Buildings	ha	6.1	5,014.0
	Office buildings	ha	0.01	483.3
	Wholesale and retail trade buildings	ha	0	28.4
	Industrial buildings	ha	14.1	931.2
	School, university and research buildings	ha	0.1	96.9
	Hospital or institutional care buildings	ha	0	31.0
	Military	ha	0	217.3
	Cemetery	ha	0	16.1
Transportation	Airfield runw ays	ha	0	49.9
	Navigable canals	ha	0.6	0.8
	Helipad	ha	0	0.7
	Harbours	ha	0.02	8.4
	Airfield runw ays	km	0	7.5
	Navigable canals	km	0.6	1.0
	Highw ays	km	4.4	414.4
	Primary Road	km	1.0	210.2
	Secondary Road	km	2.7	418.4
	Local Road	km	4.9	4,534.8
	Cart Track	km	52.7	7,185.1
	Harbours	km	0.2	2.1
Facilities	Long-distance railw ays	km	2.0	537.7
	Settling Basin	ha	0.01	46.6
	Breakw ater	ha	0.9	1.1
	Dams	ha	0.5	0.8
	Constructions for mining or extraction	ha	141.2	757.2
	Power plant constructions	ha	0.3	263.7
	Sport and recreation constructions	ha	39.1	1,068.2
	Other civil engineering w orks not elsew here classified	ha	0.5	32.0
	Long-distance pipelines, communication and electricity lines	km	5.7	347.9
	Local pipelines and cables	km	7.4	662.0
Land use	Breakw ater	km	0.1	0.1
	Dams	km	0.7	1.6
	Other	ha	3,606.6	22,428.2
	Arable land	ha	1,023.7	84,875.4
	Pastures	ha	623.1	21,851.9
	Forests	ha	162.5	38,898.2
	Heterogeneous agricultural areas	ha	15.7	388.2
	Shrub and/or herbaceous vegetation association	ha	9.8	429.8
	Inland wetlands	ha	2.9	29.3
	Permanent crops	ha	0.3	252.1

* Corresponds to the water observed in the most recent satellite imagery, excluding permanent water

** Corresponds to the water observed in the most recent satellite imagery, including permanent water

*** Corresponds to the water observed in all previous products and in the most recent satellite imagery (cumulative analysis)

Disclaimer:

Full disclaimer and other helpful information available in the online manual:

<https://emergency.copernicus.eu/mapping/ems/online-manual-rapid-mapping-products>

© European Union / Copernicus Emergency Management Service

Data Access:

All data displayed on the map(s), as well as the Physiography and Land Use - Land Cover layers,

are available in the Crisis Information Package and the Base Layer Package (for reference data).

The table above is available in editable format in the Crisis Information Package.

All products and data are also available for download on the portal.

Estimated Population:

Estimated population is based on Copernicus Global Human Settlement Layer (GHSL) dataset.

Additional population datasets and analysis are available in the summary table.

Data Sources:

Base vector layers: OpenStreetMap © OpenStreetMap contributors (2024), Wikimapia.org, GeoNames 2015,

Corine Land Cover (CLC) 2018, EuroBoundaryMap 2017 ©EuroGeographics.

Inset maps: JRC 2013, GISCO 2010 © EuroGeographics, Natural Earth 2012, CCM River DB © EJR2007, GeoNames 2015.

Digital Elevation Model: Digital Terrain Model (5m) © GeoBasis-DE / BKG (2024)

Access to the portal



PROGRAMME OF THE
EUROPEAN UNION

