



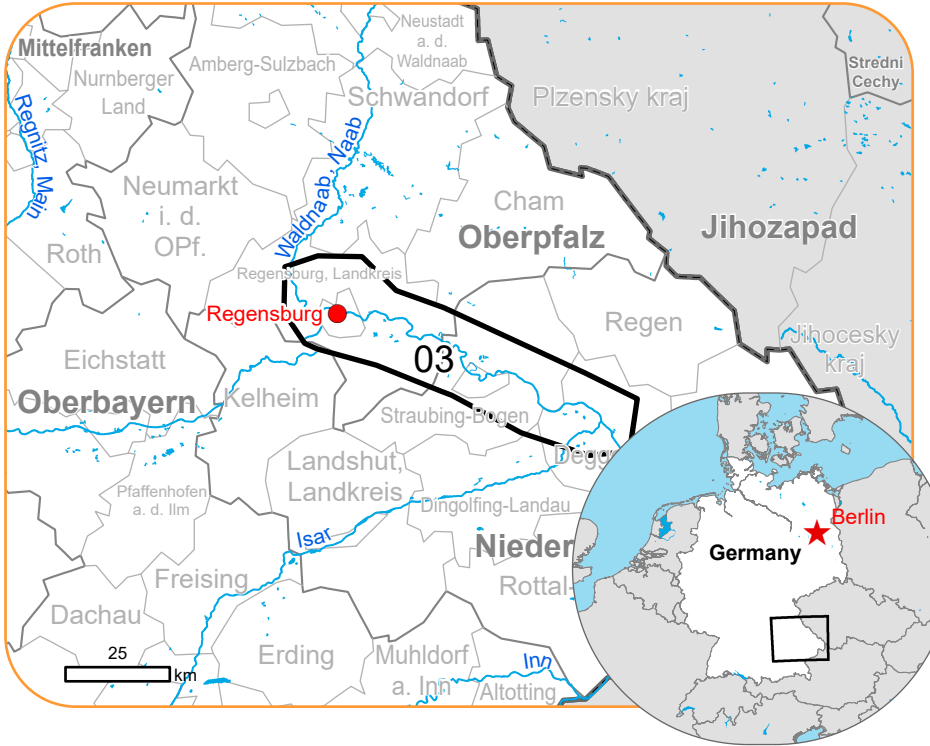
EMSR728 - AOI03

Flood in Germany

REGENSBURG

Situation as of 07/06/2024 16:48 UTC

Delineation MONIT05 - Overview map 01



Flooded area  
916.5 ha



Potentially affected  
population  
~ 450

Potentially Affected Built-up and Transportations



Built-Up  
18.6 ha

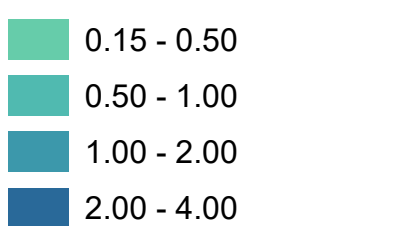


Road  
62.1 km



Railway  
0.8 km

Estimated water depth (m)



Hydrography



Crisis information

Maximum Water Extent

General information

Area of Interest

Detail map

Image Footprint

Not Analysed

Administrative Boundaries

Province

Municipality

Placenames

Placename

Built-Up Area

Residential

Non residential

School, university and research buildings

Hospital or institutional care buildings

Military

Facilities

Long-distance pipelines or lines

Water or Aquatic infrastructure

Dam

Transportation

Highway

Main road

Railway

Airfield runway

Navigable canal

Airfield

Helipad

Harbour

Water or Aquatic infrastructure

Full table available in the vector package

**Event:** Starting in the early morning of 31st May 2024, continuous rain (about 50 to 115 mm in 48 hours) is expected in wide areas of Southern and Eastern Germany (potentially affected states: Bavaria, Baden-Wuerttemberg, Hesse, Saxony, Saxony-Anhalt, Thuringia). Although uncertainties of the forecast still have to be considered, competent authorities expect flooding of different severities in wide areas. Following formal flash flood EFAS notifications, Copernicus EMS Rapid Mapping is requested to provide initial rough estimation, flood extent and damage assessment emergency mapping for some potentially affected regions.

**Data sources and analysis:** Pre-event image: Sentinel-2A/B (2024) (acquired on 27/04/2024 at 10:17 UTC, resolution 10.0 m). This image is used as background image.  
Post-event image: COSMO-SkyMed SG © ASI (2024), distributed by e-GEOS S.p.A. (acquired on 07/06/2024 at 16:48 UTC, resolution 5.0 m).  
All images are provided under COPERNICUS by the European Union and ESA, all rights reserved.

The thematic layer has been derived from post-event satellite image by means of visual interpretation.

The water extent and water depth information is based on the analysis of post-event satellite imagery and on Digital Elevation Model data. The flooded area corresponds to the water observed in the most recent satellite imagery, excluding the permanent water.

Water depth values are not calculated outside the observed event areas.

Map produced by GAF AG released by e-GEOS on the 08/06/2024.

Details on this activation and service conditions available through the QR code or at the link: <https://rapidmapping.emergency.copernicus.eu/EMSR728>

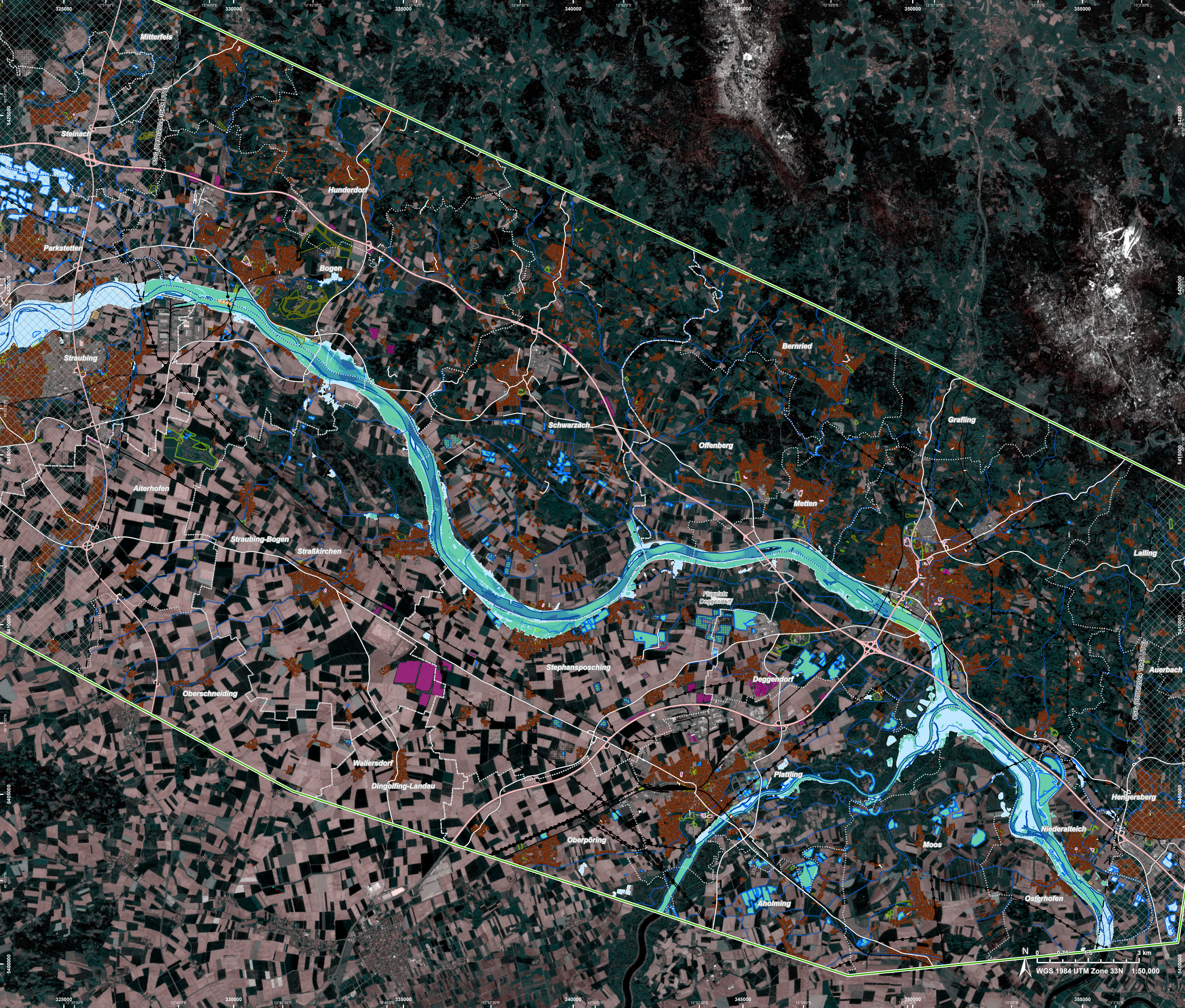



PROGRAMME OF THE  
EUROPEAN UNION



Copernicus  
European eyes on Earth

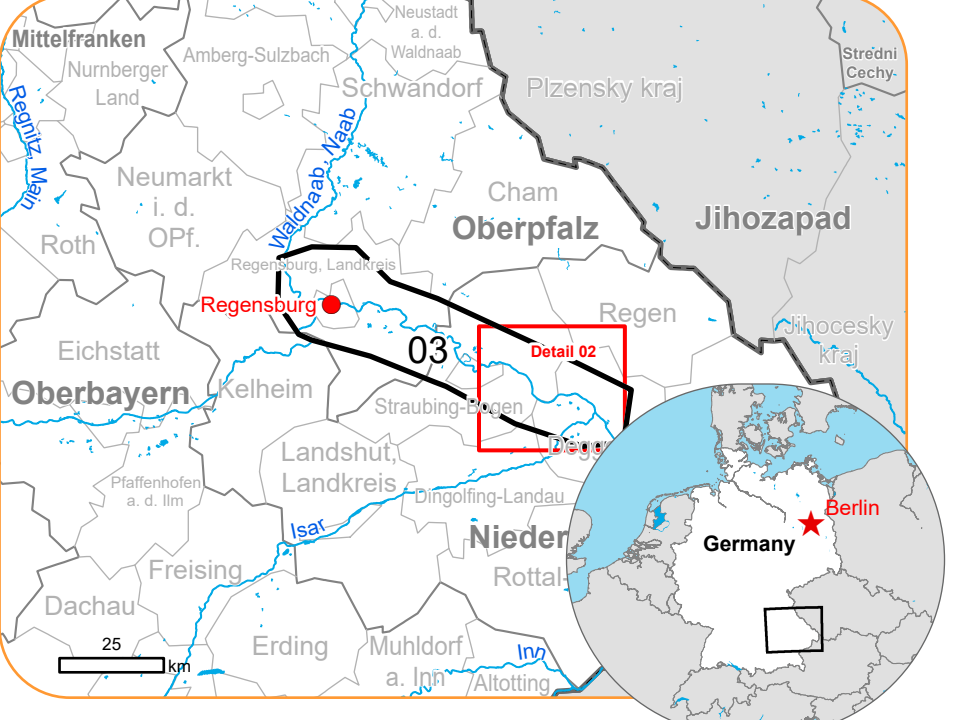






**EMSR728 - AOI03**  
Flood in Germany  
REGENSBURG

**Situation as of 07/06/2024 16:48 UTC**  
Delineation MONIT05 - Detail map 02



- Estimated water depth (m)**
  - 0.15 - 0.50
  - 0.50 - 1.00
  - 1.00 - 2.00
  - 2.00 - 4.00
- General Information**
  - Area of Interest
  - Image Footprint
  - Not Analysed
- Crisis information**
  - Maximum Water Extent
- Hydrography**
  - River
  - Stream
  - Lake
  - River
- Facilities**
  - Long-distance pipelines or lines
  - Water or Aquatic infrastructure
  - Dam
- Administrative Boundaries**
  - Province
  - Municipality
- Built-Up Area**
  - Residential
  - Non residential
  - School, university and research buildings
  - Hospital or institutional care buildings
  - Military
- Transportation**
  - Highway
  - Main road
  - Railway
  - Airfield runway
  - Airfield
  - Helipad
  - Harbour

Full table available in the vector package

**Event:** Starting in the early morning of 31st May 2024, continuous rain (about 50 to 150 l/m<sup>2</sup> in 48 hours) is expected in wide areas of Southern and Eastern Germany (potentially affected states: Bavaria, Baden-Wuerttemberg, Hesse, Saxony, Saxony-Anhalt, Thuringia). Although uncertainties of the forecast still have to be considered, competent authorities expect flooding of different severities in wide areas. Following formal flash flood EFAS notifications, Copernicus EMS Rapid Mapping is requested to provide initial rough estimation, flood extent and damage assessment emergency mapping for some potentially affected regions.


**Data sources and analysis:** Pre-event image: Sentinel-2A/B (2024) (acquired on 27/04/2024 at 10:17 UTC, resolution 10.0 m). This image is used as background image.  
Post-event image: COSMO-SkyMed SG © ASI (2024), distributed by e-GEOS S.p.A. (acquired on 07/06/2024 at 16:48 UTC, resolution 5.0 m). All images are provided under COPERNICUS by the European Union and ESA, all rights reserved.

The thematic layer has been derived from post-event satellite image by means of visual interpretation.

The water extent and water depth information is based on the analysis of post-event satellite imagery and on Digital Elevation Model data. The flooded area corresponds to the water observed in the most recent satellite imagery, excluding the permanent water.

Water depth values are not calculated outside the observed event areas.

Map produced by GAF AG released by e-GEOS on the 08/06/2024.



Details on this activation and service conditions available through the QR code or at the link: <https://rapidmapping.emergency.copernicus.eu/EMSR728>



Consequences within the AOI		Unit of measurement	Affected	Total in AOI
Flooded area*		ha		916.5
Water Extent**		ha		2,482.0
Maximum Water Extent***		ha		8,714.3
Permanent Water		ha		1,565.5
Estimated population	Number of inhabitants		~ 450	~ 470,000
Built-up	Residential Buildings	ha	2.0	5,014.0
	Office buildings	ha	0	483.3
	Wholesale and retail trade buildings	ha	0	28.4
	Industrial buildings	ha	14.2	931.2
	School, university and research buildings	ha	0	96.9
	Hospital or institutional care buildings	ha	0	31.0
	Military	ha	2.4	217.3
	Cemetery	ha	0	16.1
Transportation	Airfield runways	ha	0	49.9
	Navigable canals	ha	0	0.8
	Helipad	ha	0	0.7
	Harbours	ha	0.02	8.4
	Airfield runways	km	0	7.5
	Navigable canals	km	0	1.0
	Highways	km	1.8	414.4
	Primary Road	km	0.3	210.2
	Secondary Road	km	1.0	418.4
	Local Road	km	4.2	4,534.8
	Cart Track	km	54.8	7,185.1
	Harbours	km	0.2	2.1
	Long-distance railways	km	0.8	537.7
Facilities	Settling Basin	ha	0.1	46.6
	Breakwater	ha	0.9	1.1
	Dams	ha	0.1	0.8
	Constructions for mining or extraction	ha	72.7	757.2
	Power plant constructions	ha	0.1	263.7
	Sport and recreation constructions	ha	8.5	1,068.2
	Other civil engineering works not elsewhere classified	ha	0	32.0
	Long-distance pipelines, communication and electricity lines	km	2.8	347.9
	Local pipelines and cables	km	3.1	662.0
	Breakwater	km	0.1	0.1
	Dams	km	0.1	1.6
Land use	Other	ha	1,262.5	22,428.2
	Arable land	ha	675.7	84,875.4
	Pastures	ha	421.5	21,851.9
	Forests	ha	97.9	38,898.2
	Heterogeneous agricultural areas	ha	13.4	388.2
	Shrub and/or herbaceous vegetation association	ha	10.9	429.8
	Permanent crops	ha	0	252.1
	Inland wetlands	ha	0	29.3

\* Corresponds to the water observed in the most recent satellite imagery, excluding permanent water

\*\* Corresponds to the water observed in the most recent satellite imagery, including permanent water

\*\*\* Corresponds to the water observed in all previous products and in the most recent satellite imagery (cumulative analysis)

#### Disclaimer:

Full disclaimer and other helpful information available in the online manual:

<https://emergency.copernicus.eu/mapping/ems/online-manual-rapid-mapping-products>

© European Union / Copernicus Emergency Management Service

#### Data Access:

All data displayed on the map(s), as well as the Physiography and Land Use - Land Cover layers, are available in the Crisis Information Package and the Base Layer Package (for reference data).

The table above is available in editable format in the Crisis Information Package.

All products and data are also available for download on the portal.

#### Estimated Population:

Estimated population is based on Copernicus Global Human Settlement Layer (GHSL) dataset.

Additional population datasets and analysis are available in the summary table.

Access to the portal



#### Data Sources:

Base vector layers: OpenStreetMap © OpenStreetMap contributors (2024), Wikimapia.org, GeoNames 2015,

Corine Land Cover (CLC) 2018, EuroBoundaryMap 2017 ©EuroGeographics.

Inset maps: JRC 2013, GISCO 2010 © EuroGeographics, Natural Earth 2012, CCM River DB © EUJRC2007, GeoNames 2015.

Digital Elevation Model: Digital Terrain Model (5m) © GeoBasis-DE / BKG (2024)



PROGRAMME OF THE  
EUROPEAN UNION

