

Situation as of 03/06/2024 05:09 UTC
Delineation MONIT01 - Overview map 01



Flooded area 262.2 ha
Potentially affected population ~ 950

Potentially Affected Built-up and Transportations

Water infrastructure 1.7 km
Road 13.2 km
Railway 0.4 km
Built-Up 12.8 ha

Estimated water depth (m)		Stream
0.15 - 0.50		Lake
0.50 - 1.00		Reservoir
1.00 - 2.00		River
2.00 - 4.00		
General Information		Facilities
Area of Interest		Long-distance pipelines or lines
Detail map		Local pipelines or lines
Image Footprint		Dam
Not Analysed		Mining or extraction site
Administrative Boundaries		Sport and recreation constructions
Province		Water or Aquatic infrastructure
Municipality		
Built-Up Area		Transportation
Residential		Airfield
Hydrography		Helipad
River		

Event: Starting in the early morning of 31st May 2024, continuous rain (about 50 to 150 l/m² in 48 hours) is expected in wide areas of Southern and Eastern Germany (potentially affected states: Bavaria, Baden-Wuerttemberg, Hesse, Saxony, Saxony-Anhalt, Thuringia). Although uncertainties of the forecast still have to be considered, competent authorities expect flooding of different severities in wide areas. Following formal flash flood EFAS notifications, Copernicus EMS Rapid Mapping is requested to provide initial rough estimation, flood extent and damage assessment emergency mapping for some potentially affected regions.

Data sources and analysis: Pre-event image: Sentinel-2A/B (2024) (acquired on 28/01/2024 at 10:13 UTC, resolution 10 m). Post-event image: PAZ, satellite image © Hisdesat Servicios Estratgicos S.A., 2021 (acquired on 03/06/2024 at 05:09 UTC, resolution 6 m). All images are provided under COPERNICUS by the European Union and ESA, all rights reserved.

The thematic layer has been derived from post-event satellite image using a semi-automatic approach. Please be aware that the thematic accuracy might be lower in urban and forested areas due to inherent limitations of the SAR analysis technique

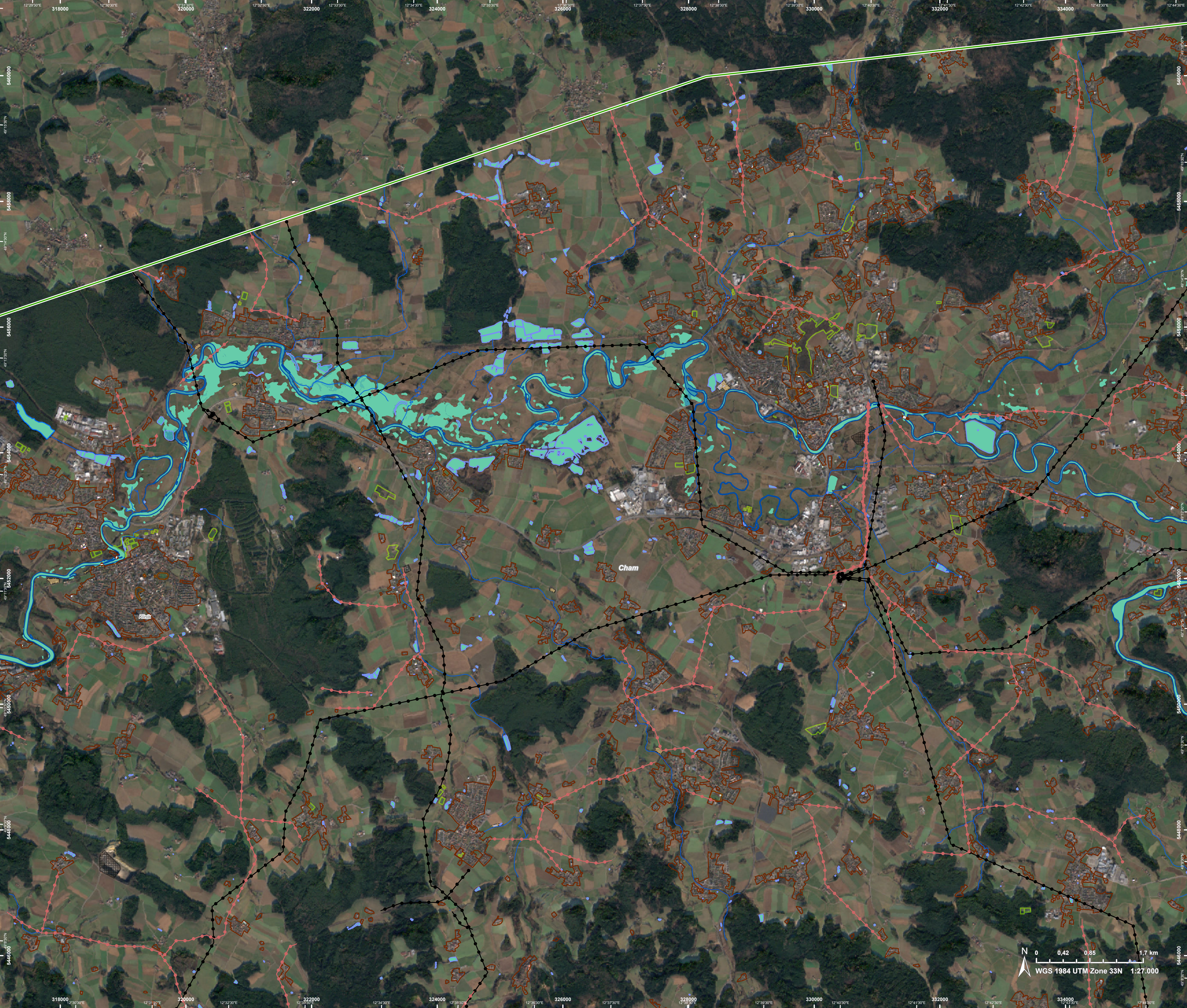
The water extent and water depth information is based on the analysis of post-event satellite imagery and on Digital Elevation Model data. The flooded area corresponds to the water observed in the most recent satellite imagery, excluding the permanent water.

Water depth values are not calculated outside the observed event areas.

Map produced by ITHACA released by e-GEOS on the 03/06/2024.

Details on this activation and service conditions available through the QR code or at the link: <https://rapidmapping.emergency.copernicus.eu/EMSR728>








EMSR728 - AOI08

Flood in Germany

CHAM

Situation as of 03/06/2024 05:09 UTC

Delineation MONIT01 - Detail map 02



- Estimated water depth (m)

0.15 - 0.50

0.50 - 1.00

1.00 - 2.00

2.00 - 4.00
- General Information

Area of Interest

Built-Up Area

Residential

Hydrography

River

Stream

Lake
- Reservoir

River

Facilities

Long-distance pipelines or lines

Local pipelines or lines

Dam

Mining or extraction site

Sport and recreation constructions

Water or Aquatic infrastructure

Transportation

Helipad

Event: Starting in the early morning of 31st May 2024, continuous rain (about 50 to 150 l/m2 in 48 hours) is expected in wide areas of Southern and Eastern Germany (potentially affected states: Bavaria, Baden-Wuerttemberg, Hesse, Saxony, Saxony-Anhalt, Thuringia). Although uncertainties of the forecast still have to be considered, competent authorities expect flooding of different severities in wide areas. Following formal flash flood EFAS notifications, Copernicus EMS Rapid Mapping is requested to provide initial rough estimation, flood extent and damage assessment emergency mapping for some potentially affected regions.

Data sources and analysis: Pre-event image: Sentinel-2A/B (2024) (acquired on 28/01/2024 at 10:13 UTC, resolution 10 m). Post-event image: PAZ, satellite image © Hisdesat Servicios Estratégicos S.A., 2021 (acquired on 03/06/2024 at 05:09 UTC, resolution 6 m). All images are provided under COPERNICUS by the European Union and ESA, all rights reserved.

The thematic layer has been derived from post-event satellite image using a semi-automatic approach. Please be aware that the thematic accuracy might be lower in urban and forested areas due to inherent limitations of the SAR analysis technique

The water extent and water depth information is based on the analysis of post-event satellite imagery and on Digital Elevation Model data. The flooded area corresponds to the water observed in the most recent satellite imagery, excluding the permanent water.

Water depth values are not calculated outside the observed event areas.

Consequences within the AOI		Unit of measurement	Affected	Total in AOI
Flooded area*		ha		262,2
Water Extent**		ha		1.596,6
Maximum Water Extent***		ha		2.077,7
Permanent Water		ha		1.334,3
Estimated population	Number of inhabitants		~ 950	~ 260.000
Built-up	Residential Buildings	ha	10,3	14.963,1
	Office buildings	ha	0,8	688,9
	Wholesale and retail trade buildings	ha	0	56,8
	Industrial buildings	ha	1,4	915,9
	School, university and research buildings	ha	0	70,9
	Hospital or institutional care buildings	ha	0	15,7
	Military	ha	0,4	577,8
	Cemetery	ha	0	75,5
Transportation	Airfield runways	ha	0	18,7
	Helipad	ha	0	1,3
	Airfield runways	km	0,04	1,9
	Highways	km	0,4	87,8
	Primary Road	km	0,9	563,7
	Secondary Road	km	1,1	583,1
	Local Road	km	1,5	4.432,1
	Cart Track	km	9,4	8.046,9
	Long-distance railways	km	0,4	270,9
Facilities	Not Applicable	ha	25,9	1.066,6
	Long-distance pipelines, communication and electricity lines	km	3,2	373,2
	Local pipelines and cables	km	3,8	971,6
	Dams	km	1,7	2,6
Land use	Pastures	ha	941,0	96.314,5
	Forests	ha	298,4	110.038,4
	Other	ha	238,2	11.409,5
	Arable land	ha	71,1	21.896,0
	Heterogeneous agricultural areas	ha	34,7	919,6
	Shrub and/or herbaceous vegetation association	ha	13,1	2.379,5

* Corresponds to the water observed in the most recent satellite imagery, excluding permanent water

** Corresponds to the water observed in the most recent satellite imagery, including permanent water

*** Corresponds to the water observed in all previous products and in the most recent satellite imagery (cumulative analysis)

Disclaimer:

Full disclaimer and other helpful information available in the online manual:

<https://emergency.copernicus.eu/mapping/ems/online-manual-rapid-mapping-products>

© European Union / Copernicus Emergency Management Service

Data Access:

All data displayed on the map(s), as well as the Physiography and Land Use - Land Cover layers, are available in the Crisis Information Package and the Base Layer Package (for reference data).

The table above is available in editable format in the Crisis Information Package.

All products and data are also available for download on the portal.

Access to the portal



Estimated Population:

Estimated population is based on Copernicus Global Human Settlement Layer (GHSL) dataset.

Additional population datasets and analysis are available in the summary table.

Data Sources:

Base vector layers: OpenStreetMap © OpenStreetMap contributors (2024), Wikimapia.org, GeoNames 2015,

Corine Land Cover (CLC) 2018, EuroBoundaryMap 2017 ©EuroGeographics.

Inset maps: JRC 2013, GISCO 2010 © EuroGeographics, Natural Earth 2012, CCM River DB © EUJRC2007, GeoNames 2015.

Digital Elevation Model: Digital Terrain Model 10 m, GeoBasis-DE/BKG (2024).



PROGRAMME OF THE
EUROPEAN UNION

