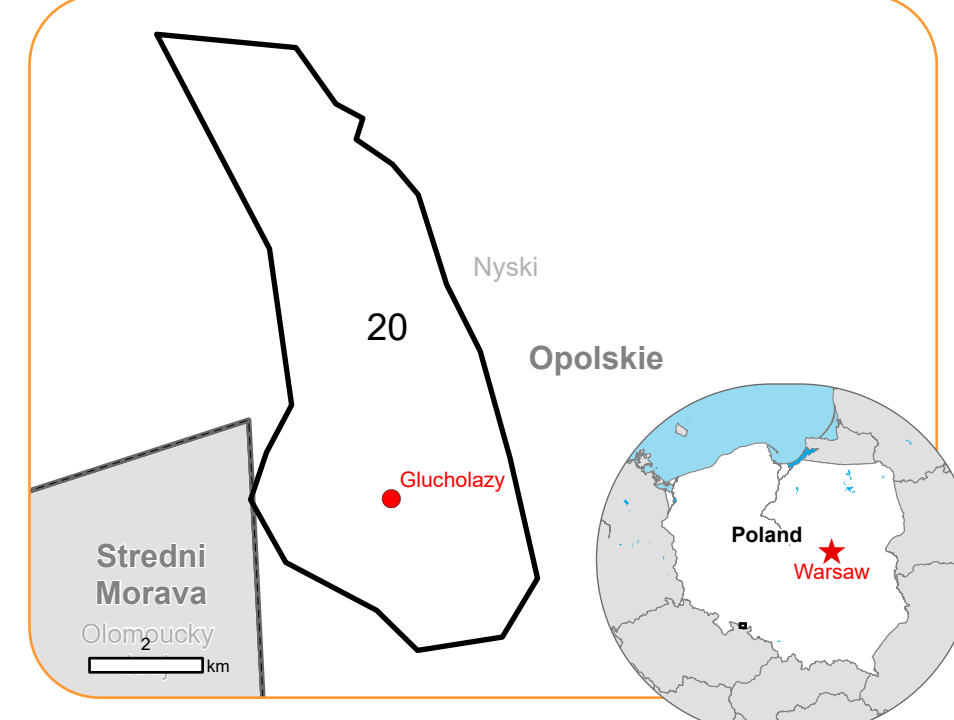


EMSR756 - AOI20
Flood in South West Poland
GLUCHOLAZY

Situation as of 24/09/2024 09:23 UTC
Grading - Overview map 01



Flooded area 15.5 ha
Flood trace 368.0 ha
Potentially affected population ~ 3 000

Affected Built-up and Transportations

Built-up 1 065 No.
Road 16.3 km

- Crisis Information**
- Flooded Area
 - Flood trace
 - Built Up Grading**
 - Destroyed
 - Damaged
 - Possibly damaged
 - Facilities Grading**
 - Local pipeline or line, Possibly damaged
 - Dam, Destroyed
 - Dam, Possibly damaged
 - Damaged
 - Possibly damaged
 - Transportation Grading**
 - Bridge and elevated highway, Destroyed
 - Bridge and elevated highway, Possibly damaged
- Road, Destroyed**
Road, Damaged
Road, Possibly damaged
Main road, No visible damage
Local road, No visible damage
Track, No visible damage
Railway, No visible damage
- General Information**
- Area of Interest
 - Detail map
 - Not Analysed
- Placenames**
- Placename
- Hydrography**
- Lake, River

Event: Due to heavy rainfall in Middle and Eastern Europe, flooding is forecast to affect Polish regions close to the Czechia Border. Flooding is expected from 14 September, 2024 onwards. Copernicus EMS Rapid Mapping is requested to provide flood extent emergency mapping and monitoring.

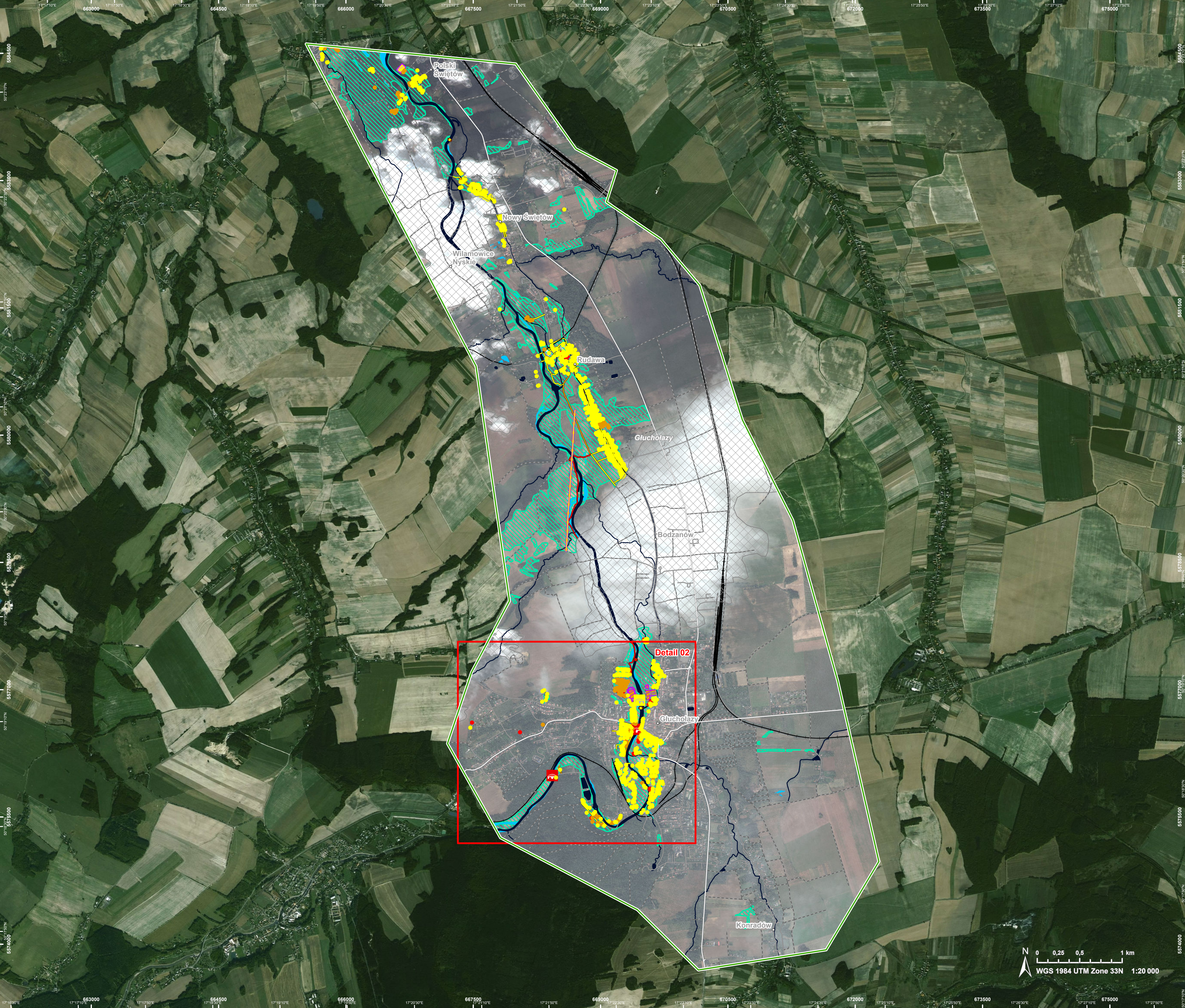
Data sources and analysis:
Pre-event image: PlanetScope © Planet, 2024 (acquired on 18/10/2023 at 08:59 UTC, resolution 3.9 m).
Post-event image: GeoEye© Maxar Technologies, Inc. (2024), (acquired on 24/09/2024 at 09:23 UTC, resolution 0.5 m). This image is used as background image.
All images are provided under COPERNICUS by the European Union and ESA, all rights reserved.

The thematic layer has been derived from post-event satellite image by means of visual interpretation.

This analysis has been supplemented by the social media.

Map produced by CLS released by e-GEOS on the 24/09/2024.

Details on this activation and service conditions available through the QR code or at the link: <https://rapidmapping.emergency.copernicus.eu/EMSR756>

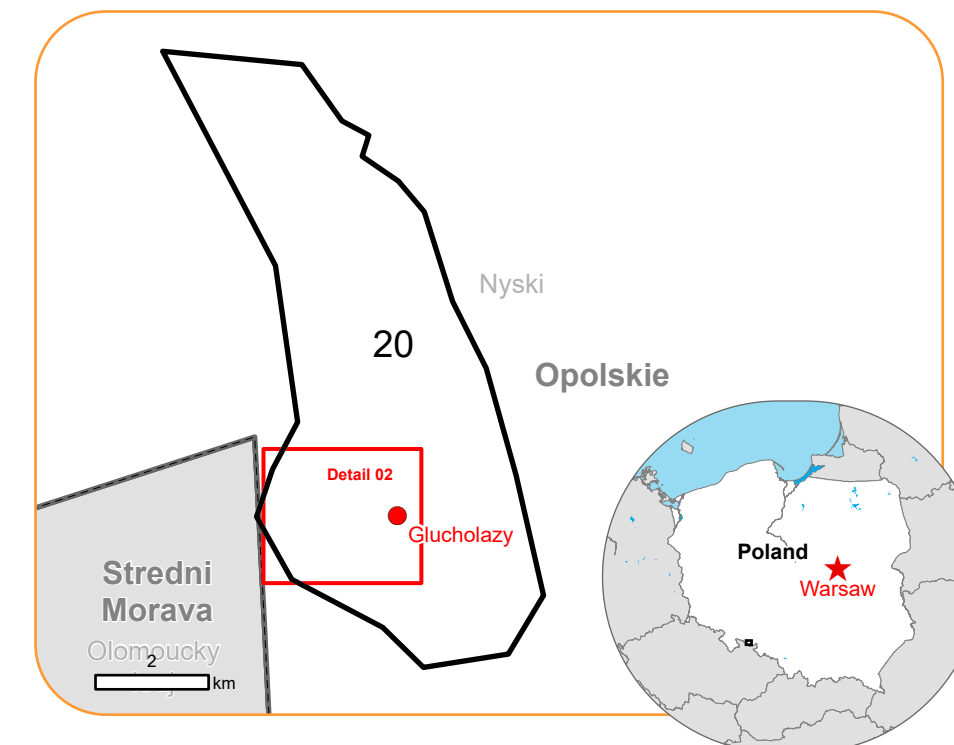




EMSR756 - AOI20
Flood in South West Poland
GLUCHOLAZY

Situation as of 24/09/2024 09:23 UTC

Grading - Detail map 02






Crisis Information

- Flooded Area
 Flood trace



Built Up Grading

- Destroyed
- Damaged
- Possibly damaged

Facilities Grading



-  Dam, Destroyed
-  Dam, Possibly damaged
-  Damaged

Transportation Grading

-  Bridge and elevated highway, Destroyed
-  Bridge and elevated highway, Possibly damaged

- Road, Destroyed
- Road, Damaged
- Road, Possibly damaged
- Main road, No visible damage
- Local road, No visible damage
- Track, No visible damage
- Railway, No visible damage

General Information

-  Area of Interest
 Not Analysed

Placenames

- Placename

Hydrography

- Lake, River

Event: Due to heavy rainfall in Middle and Eastern Europe, flooding is forecast to affect Polish regions close to the Czechia Border. Flooding is expected from 14 September 2024 onwards. Copernicus EMS Rapid Mapping is requested to provide flood extent emergency mapping and monitoring.

Data sources and analysis:
Pre-event image: PlanetScope © Planet, 2024 (acquired on 18/10/2023 at 08:59 UTC, resolution 3.9 m).
Post-event image: GeoEye© Maxar Technologies, Inc. (2024), (acquired on 24/09/2024 at 09:23 UTC, resolution 0.5 m). This image is used as background image.
All images are provided under COPERNICUS by the European Union and ESA, all rights reserved.

The thematic layer has been derived from post-event satellite image by means of visual interpretation.

This analysis has been supplemented by the social media.

Map produced by CLS released by e-GEOS on the 24/09/2024.

Details on this activation and service conditions available through the QR code or at the link: <https://rapidmapping.emergency.copernicus.eu/EMSR756>



PROGRAMME OF THE
EUROPEAN UNION



Consequences within the AOI						
	Unit of measurement	Destroyed	Damaged	Possibly damaged*	Total affected**	Total in AOI
Flood trace	ha					368,0
Flooded area	ha					15,5
Estimated population	Number of inhabitants				- 3 000	- 15 000
Built-up	Residential Buildings	No. 22	69	378	469	2 040
	Office buildings	No. 0	0	14	14	25
	Fire station	No. 0	0	0	0	3
	Wholesale and retail trade buildings	No. 1	5	13	19	65
	Industrial buildings	No. 0	0	31	31	52
	Reservoirs, silos and warehouses	No. 0	1	8	9	20
	School, university and research buildings	No. 0	0	3	3	17
	Hospital or institutional care buildings	No. 0	0	0	0	7
	Non-residential farm buildings	No. 0	1	13	14	84
	Buildings used as places of worship and for religious activities	No. 0	0	1	1	7
	Other buildings not elsewhere classified	No. 0	0	0	0	2
	Hotel buildings	No. 0	1	0	1	2
	Communication buildings, stations, terminals and associated buildings	No. 0	3	27	30	123
	Garage buildings	No. 0	0	1	1	27
	Unclassified	No. 10	60	403	473	2 632
Transportation	Primary Road	km 0,05	0,1	0,2	0,3	5,4
	Secondary Road	km 0	0	0	0	11,9
	Local Road	km 0,2	0,4	7,8	8,4	101,9
	Cart Track	km 1,7	1,1	1,9	4,6	111,6
	No Driveway	km 0,2	0,4	2,3	2,9	2,9
	Long-distance railways	km 0	0	0	0	38,5
Facilities	Sport and recreation constructions	ha 0	2,1	0,6	2,7	7,4
	Long-distance pipelines, communication and electricity lines	km 0	0	0	0	8,5
	Local pipelines and cables	km 0	0	1,7	1,7	12,1
	Dams	km 0,02	0	0,1	0,1	0,4
Land use	Arable land	ha			164,8	1 969,0
	Other	ha			119,4	836,8
	Pastures	ha			39,7	86,6
	Heterogeneous agricultural areas	ha			33,1	256,9
	Forests	ha			24,0	374,5
	Shrub and/or herbaceous vegetation association	ha			2,6	45,4
* Presence of damage proxies and proximitywith destroyed/damaged asset						
** Sum of all damage classes						

Disclaimer:
Full disclaimer and other helpful information available in the online manual:
<https://emergency.copernicus.eu/mapping/ems/online-manual-rapid-mapping-products>
© European Union / Copernicus Emergency Management Service

Data Access:
All data displayed on the map(s), as well as the Physiography and Land Use - Land Cover layers, are available in the Crisis Information Package and the Base Layer Package (for reference data). The table above is available in editable format in the Crisis Information Package. All products and data are also available for download on the portal.

Estimated Population:
Estimated population is based on Copernicus Global Human Settlement Layer (GHSL) dataset. Additional population datasets and analysis are available in the summary table.

Data Sources:
Base Vector Layers: OpenStreetMap © OpenStreetMap contributors (2024), Wikimapia.org, GeoNames 2015, Corine Land Cover (CLC) 2018, EuroBoundaryMap 2017 ©EuroGeographics.
Inset Maps: JRC 2013, GISCO 2010 © EuroGeographics, Natural Earth 2012, CCM River DB © EUJRC2007, GeoNames 2015.
Digital Elevation Model: COP-DEM-EEA-10-R product © DLR e.V. (2014-2018) and
© Airbus Defence and Space GmbH (2020) provided under COPERNICUS by the European Union and ESA, all rights reserved.

