

Flooded area 0.7 ha
Flood trace 60.8 ha

Potentially affected population
~ 100

Affected Transportations

Road
7.3 km

Railway
0.4 km

Crisis Information

Flooded Area
Flood trace

Facilities Grading

Long-distance pipeline or line, Possibly damaged
Local pipeline or line, Possibly damaged
Dam, Possibly damaged
Possibly damaged

Transportation Grading

Road, Destroyed
Road, Damaged
Road, Possibly damaged
Railway, Possibly damaged
Highway, No visible damage

Main road, No visible damage
Local road, No visible damage
Track, No visible
Railway, No visible damage

General Information

Area of Interest
Detail map

Administrative Boundaries

Municipality

Placenames

Placename

Hydrography

Lake, River

Event: On 29 October 2024 at 14:30 UTC, an extraordinary rainfall event affected the Valencia region. High water levels in rivers caused flooding in Ribera Alta, Horta, La Plana de Utiel and Letur river. On 31 October 2024, extraordinary precipitation caused flooding in the Castellon Province area. Copernicus EMS Rapid Mapping is requested to provide emergency mapping of flood extent, Monitoring and classification damages emergency mapping.

Data sources and analysis:
Pre-event image: WorldView-3 © Maxar Technologies, Inc. 2024, (acquired on 14/06/2024 at 11:06 UTC, resolution 0.3 m).

Post-event image: Pléiades Neo © CNES (2024), distributed by Airbus DS (acquired on 11/11/2024 at 11:20 UTC, resolution 0.5 m). This image is used as background image.

All images are provided under COPERNICUS by the European Union and ESA, all rights reserved.

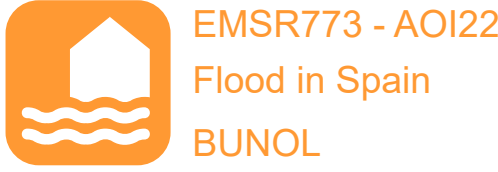
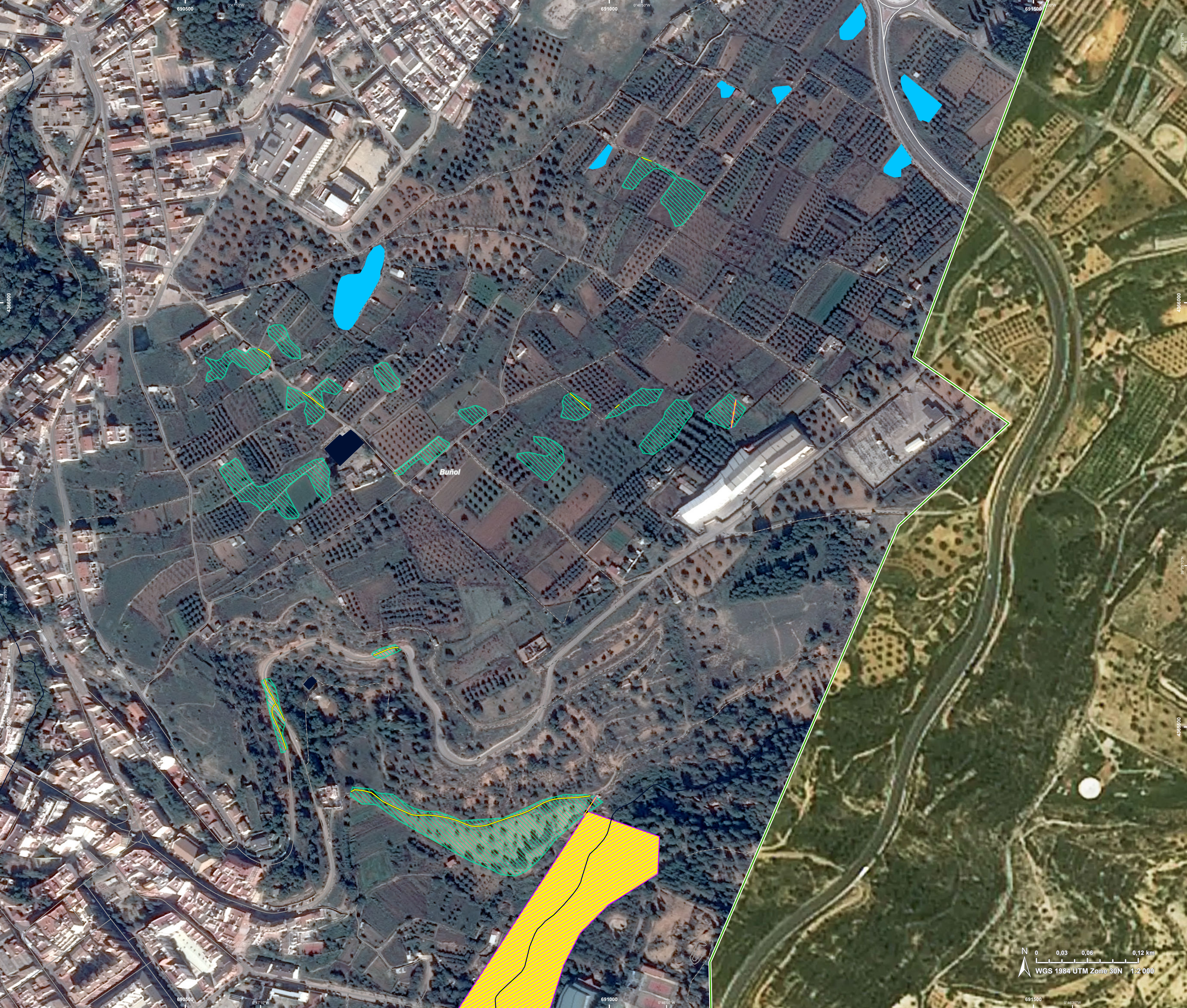
The thematic layer has been derived from post-event satellite image using a semi-automatic approach.

This analysis has been supplemented by the social media.

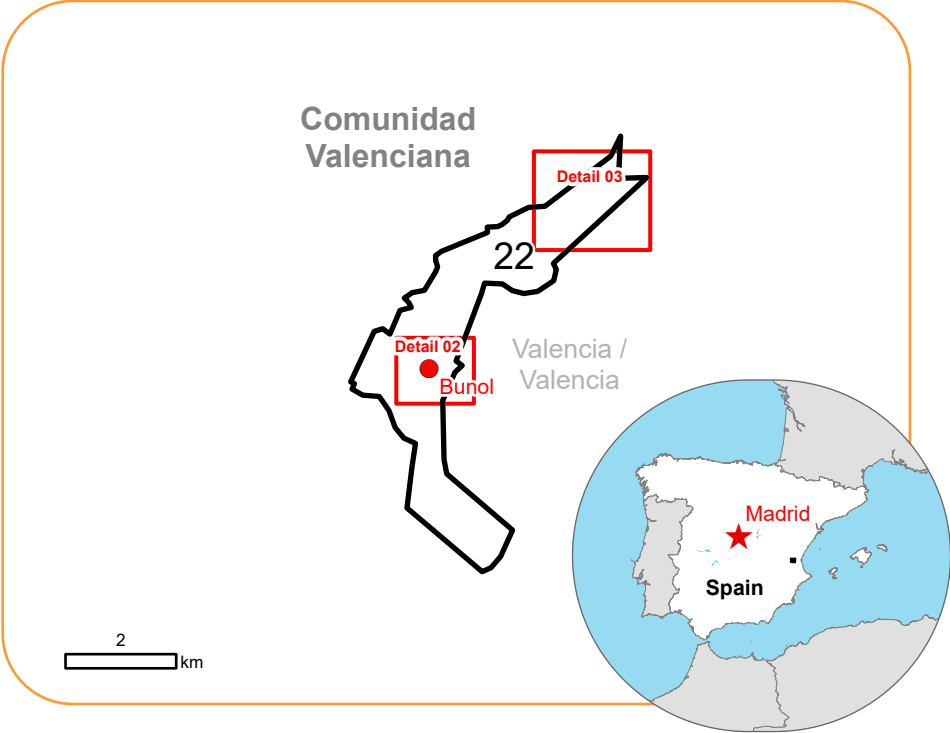
Map produced by CLS released by e-GEOS on the 16/11/2024.

Details on this activation and service conditions available through the QR code or at the link: <https://rapidmapping.emergency.copernicus.eu/EMSR773>





Situation as of 11/11/2024 11:20 UTC
Grading - Detail map 02



Crisis Information

- Flooded Area
- Flood trace

Facilities Grading

- Long-distance pipeline or line, Possibly damaged
- Local pipeline or line, Possibly damaged

Facilities Grading

- Possibly damaged

Transportation Grading

- Road, Possibly damaged
- Main road, No visible damage
- Local road, No visible damage
- Track, No visible damage

General Information

- Area of Interest

Hydrography

- Lake, River

Event: On 29 October 2024 at 14:30 UTC, an extraordinary rainfall event affected the Valencia region. High water levels in rivers caused flooding in Ribera Alta, Horta, La Plana de Utiel and Letur river. On 31 October 2024, extraordinary precipitation caused flooding in the Castellon Province area. Copernicus EMS Rapid Mapping is requested to provide emergency mapping of flood extent, Monitoring and classification damages emergency mapping.

Data sources and analysis:
Pre-event image: WorldView-3 © Maxar Technologies, Inc. 2024, (acquired on 14/06/2024 at 11:06 UTC, resolution 0.3 m).

Post-event image: Pléiades Neo © CNES (2024), distributed by Airbus DS (acquired on 11/11/2024 at 11:20 UTC, resolution 0.5 m).
This image is used as background image.

All images are provided under COPERNICUS by the European Union and ESA, all rights reserved.

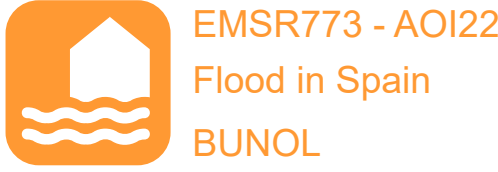
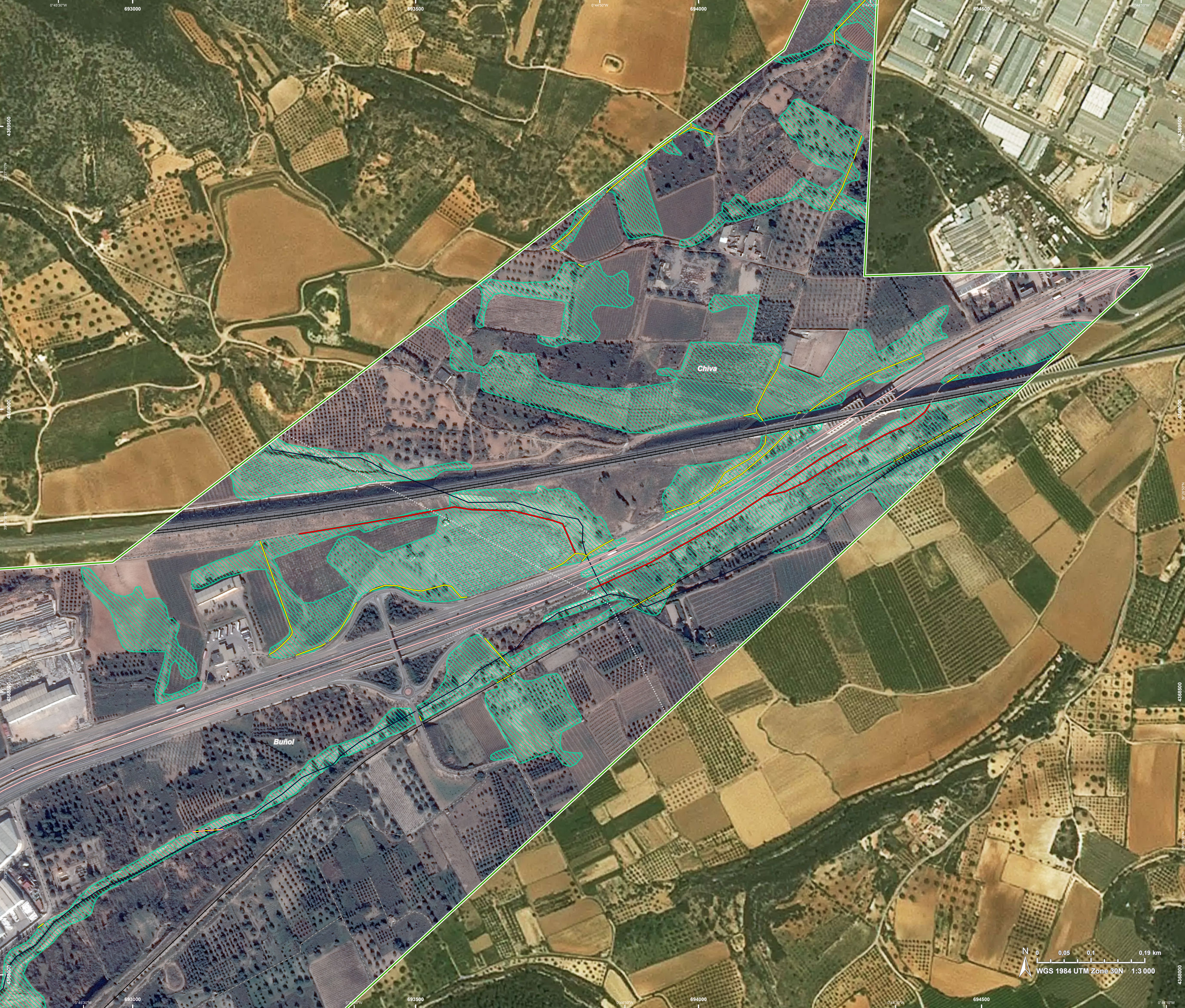
The thematic layer has been derived from post-event satellite image using a semi-automatic approach.

This analysis has been supplemented by the social media.

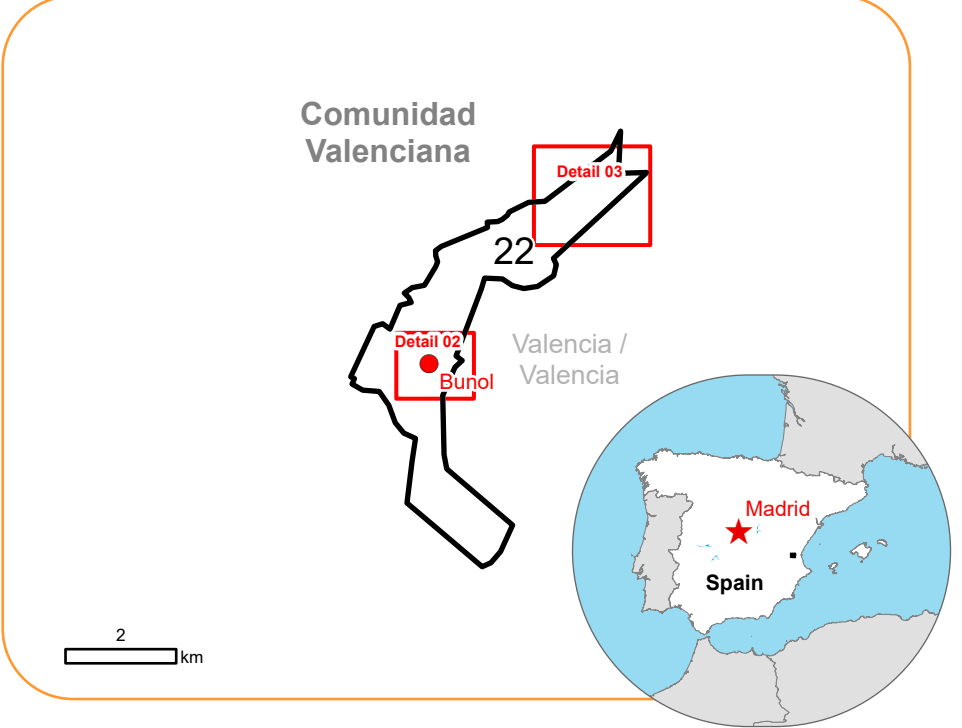
Map produced by CLS released by e-GEOS on the 16/11/2024.

Details on this activation and service conditions available through the QR code or at the link: <https://rapidmapping.emergency.copernicus.eu/EMSR773>





Situation as of 11/11/2024 11:20 UTC
Grading - Detail map 03



- Flood trace
- Facilities Grading
 - Long-distance pipeline or line, Possibly damaged
- Transportation Grading
 - Road, Destroyed
 - Road, Possibly damaged
 - Railway, Possibly damaged
 - Highway, No visible damage
 - Local road, No visible damage
 - Track, No visible damage
 - Railway, No visible damage
- General Information
 - Area of Interest
- Administrative Boundaries
 - Municipality

Event: On 29 October 2024 at 14:30 UTC, an extraordinary rainfall event affected the Valencia region. High water levels in rivers caused flooding in Ribera Alta, Horta, La Plana de Utiel and Letur river. On 31 October 2024, extraordinary precipitation caused flooding in the Castellon Province area. Copernicus EMS Rapid Mapping is requested to provide emergency mapping of flood extent, Monitoring and classification damages emergency mapping.

Data sources and analysis:
Pre-event image: WorldView-3 © Maxar Technologies, Inc. 2024, (acquired on 14/06/2024 at 11:06 UTC, resolution 0.3 m).

Post-event image: Pléiades Neo © CNES (2024), distributed by Airbus DS (acquired on 11/11/2024 at 11:20 UTC, resolution 0.5 m). This image is used as background image.

All images are provided under COPERNICUS by the European Union and ESA, all rights reserved.

The thematic layer has been derived from post-event satellite image using a semi-automatic approach.

This analysis has been supplemented by the social media.

Map produced by CLS released by e-GEOS on the 16/11/2024.

Details on this activation and service conditions available through the QR code or at the link: <https://rapidmapping.emergency.copernicus.eu/EMSR773>



Consequences within the AOI							
	Unit of measurement		Destroyed	Damaged	Possibly damaged*	Total affected**	Total in AOI
Flood trace		ha					60,8
Flooded area		ha					0,7
Estimated population	Number of inhabitants					~ 100	~ 8 500
Transportation	Secondary Road	km	0	0,1	0	0,1	0,1
	Local Road	km	0,4	0,01	0,4	0,8	0,8
	Cart Track	km	1,1	1,4	3,1	5,6	5,6
	No Driveway	km	0,1	0	0,7	0,8	0,8
	Long-distance railways	km	0	0	0,4	0,4	0,4
Facilities	Constructions for mining or extraction	ha	0	0	16,9	16,9	16,9
	Sport and recreation constructions	ha	0	0	2,5	2,5	2,5
	Long-distance pipelines, communication and electricity lines	km	0	0	0,2	0,2	0,2
	Local pipelines and cables	km	0	0	0,1	0,1	0,1
	Dams	km	0	0	0,01	0,01	0,01
* Presence of damage proxies and proximity with destroyed/damaged asset							
** Sum of all damage classes							

Disclaimer:

Full disclaimer and other helpful information available in the online manual:

<https://emergency.copernicus.eu/mapping/ems/online-manual-rapid-mapping-products>

© European Union / Copernicus Emergency Management Service

Data Access:

All data displayed on the map(s),

are available in the Crisis Information Package and the Base Layer Package (for reference data).

The table above is available in editable format in the Crisis Information Package.

All products and data are also available for download on the portal.

Estimated Population:

Estimated population is based on Copernicus Global Human Settlement Layer (GHSL) dataset.

Additional population datasets and analysis are available in the summary table.

Data Sources:

Base Vector Layers: OpenStreetMap © OpenStreetMap contributors (2024), Wikimapia.org, GeoNames 2015,

Corine Land Cover (CLC) 2018, EuroBoundaryMap 2017 ©EuroGeographics.

Inset Maps: JRC 2013, GISCO 2010 © EuroGeographics, Natural Earth 2012, CCM River DB © EUJRC2007, GeoNames 2015.

Digital Elevation Model: COP-DEM-EEA-10-R product © DLR e.V. (2014-2018) and

© Airbus Defence and Space GmbH (2020) provided under COPENICUS by the European Union and ESA, all rights reserved.

Access to the portal



PROGRAMME OF THE
EUROPEAN UNION

