

**EMSR857 - AOI04**  
**Flood in Mozambique**  
**BELA VISTA**

**Situation as of 17/01/2026 03:19 UTC**  
Delineation - Overview map 01



**Flooded area**  
EO-based 2,847.4 ha  
Model-based 6,765.3 ha

**Potentially affected population**  
~ 20

**Potentially Affected Transportations**

**Road**  
2.1 km

**Estimated flood depth (m)**

- Below 0.50
- 0.50 to 1.00
- 1.00 to 2.00
- 2.00 to 4.00

**General Information**

- Area of Interest
- Detail map
- Image Footprint
- Not Analysed

**Hydrography**

Lake, River

**Transportation**

- Highway
- Main road
- Local road
- Track
- Railway
- Helipad

**Event:** Heavy rain that started in December, has caused several floods in Mozambique. The event is ongoing. Copernicus EMS Rapid Mapping is requested to provide initial rough estimation and flood extent emergency mapping.

**Data sources and analysis:** Pre-event image: Sentinel-2A/B (2021) (acquired on 13/12/2025 at 07:43 UTC, resolution 10 m). This image is used as background image. Post-event image: Sentinel-1(2026) (acquired on 17/01/2026 at 03:19 UTC, resolution 20m). All images are provided under COPERNICUS by the European Union and ESA, all rights reserved.

The thematic layer has been derived from post-event satellite image using a semi-automatic approach. Please be aware that the thematic accuracy might be lower in urban and forested areas due to inherent limitations of the SAR analysis technique.

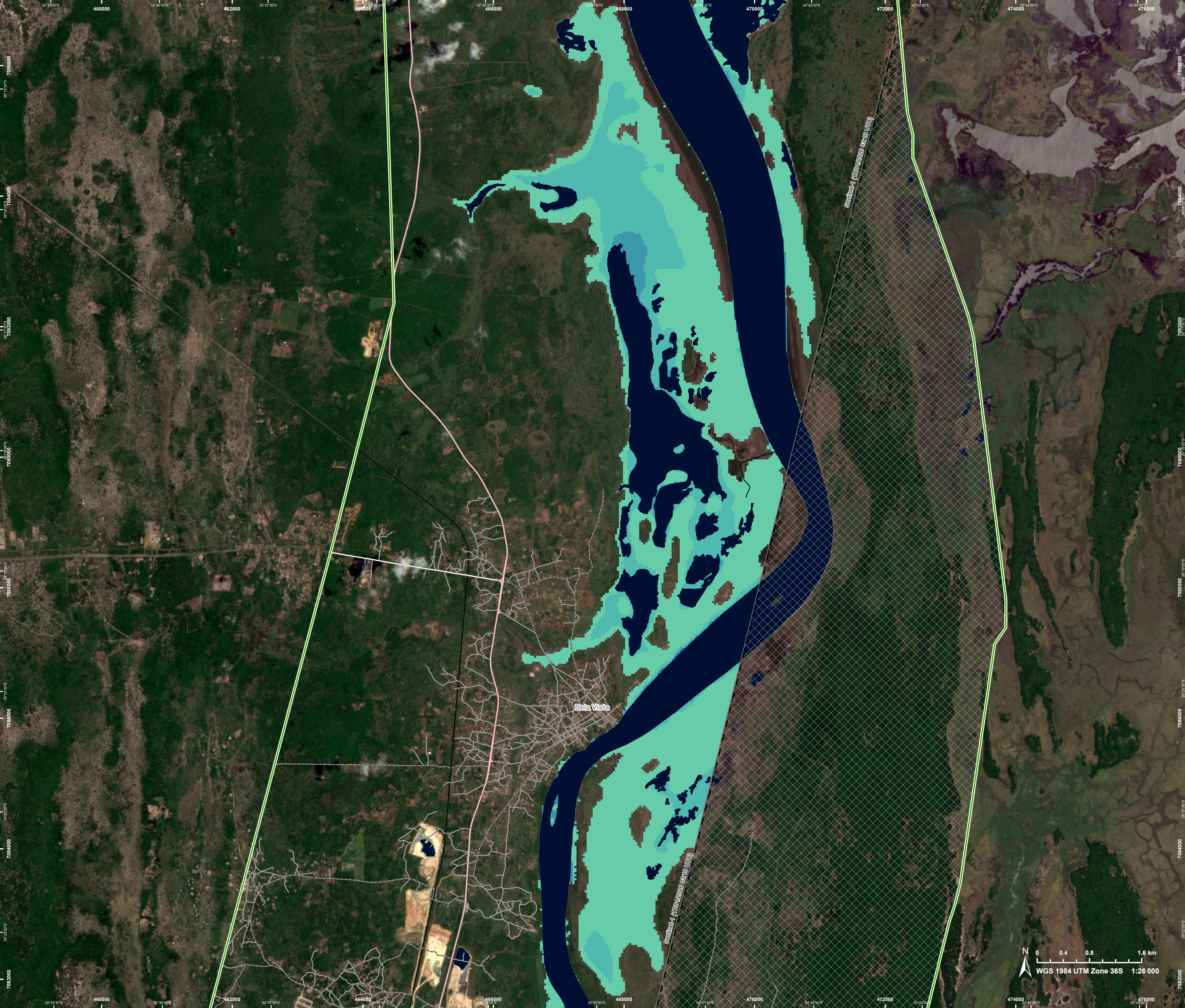
The flooded area corresponds to the water observed in the most recent satellite imagery, excluding the permanent water.

An extrapolated flood extent is generated by integrating observed flood areas with a Digital Terrain Model (DTM). The model's accuracy and spatial coverage depend on DTM resolution and quality, enabling the prediction of potentially flooded areas in regions with limited visibility in imagery, such as urban and forested zones.

Map produced by SERTIT released by e-GEOS on the 18/01/2026.

Details on this activation and service conditions available through the QR code or at the link: <https://mapping.emergency.copernicus.eu/activations/EMSR857>





EMSR857 - AOI04  
Flood in Mozambique  
BELA VISTA

Situation as of 17/01/2026 03:19 UTC  
Delineation - Detail map 02



- |  |   |
|--|---|
| <b>Estimated flood depth (m)</b>   | <b>Hydrography</b>  |
| <span style="display: inline-block; width: 10px; height: 10px; background-color: #90EE90; border: 1px solid black;"></span> Below 0.50   | <span style="display: inline-block; width: 10px; height: 10px; background-color: #000080; border: 1px solid black;"></span> Lake, River |
| <span style="display: inline-block; width: 10px; height: 10px; background-color: #4682B4; border: 1px solid black;"></span> 0.50 to 1.00 | <b>Transportation</b>   |
| <span style="display: inline-block; width: 10px; height: 10px; background-color: #1E90FF; border: 1px solid black;"></span> 1.00 to 2.00 | <span style="display: inline-block; width: 10px; border-bottom: 2px solid #FF6347;"></span> Highway                                     |
| <span style="display: inline-block; width: 10px; height: 10px; background-color: #4169E1; border: 1px solid black;"></span> 2.00 to 4.00 | <span style="display: inline-block; width: 10px; border-bottom: 1px solid #808080;"></span> Main road                                   |
| <b>General Information</b>   | <span style="display: inline-block; width: 10px; border-bottom: 1px solid #808080;"></span> Local road                                  |
| <span style="display: inline-block; width: 10px; height: 10px; border: 2px solid #90EE90;"></span> Area of Interest                      | <span style="display: inline-block; width: 10px; border-bottom: 1px solid black;"></span> Track   |
| <span style="display: inline-block; width: 10px; height: 10px; border: 1px solid black;"></span> Image Footprint                         | <span style="display: inline-block; width: 10px; border-bottom: 1px solid black;"></span> Railway                                       |
| <span style="display: inline-block; width: 10px; height: 10px; background-color: #D3D3D3; border: 1px solid black;"></span> Not Analysed |   |

**Event:** Heavy rain that started in December, has caused several floods in Mozambique. The event is ongoing, Copernicus EMS Rapid Mapping is requested to provide initial rough estimation and flood extent emergency mapping.

**Data sources and analysis:** Pre-event image: Sentinel-2A/B (2021) (acquired on 13/12/2025 at 07:43 UTC, resolution 10 m). This image is used as background image. Post-event image: Sentinel-1(2026) (acquired on 17/01/2026 at 03:19 UTC, resolution 20m). All images are provided under COPERNICUS by the European Union and ESA, all rights reserved.

The thematic layer has been derived from post-event satellite image using a semi-automatic approach. Please be aware that the thematic accuracy might be lower in urban and forested areas due to inherent limitations of the SAR analysis technique.

The flooded area corresponds to the water observed in the most recent satellite imagery, excluding the permanent water.

An extrapolated flood extent is generated by integrating observed flood areas with a Digital Terrain Model (DTM). The model's accuracy and spatial coverage depend on DTM resolution and quality, enabling the prediction of potentially flooded areas in regions with limited visibility in imagery, such as urban and forested zones.

Map produced by SERTIT released by e-GEOS on the 18/01/2026.

Details on this activation and service conditions available through the QR code or at the link: <https://mapping.emergency.copernicus.eu/activations/EMSR857>



Consequences within the AOI

|                    |  |                          | Unit of measurement | LATEST IMPACT              |                    |                                  |
|--------------------|--|--------------------------|---------------------|----------------------------|--------------------|----------------------------------|
| Crisis information |  | Flooded area             |                     | Imagery-based observation* | Model-based output | Imagery- and Model-based results |
|                    |  | Maximum of all extents** | ha                  | 2 847.4                    | 6 765.3            | 9 612.7                          |
|                    |  |                          | ha                  | 2 847.4                    | 6 765.3            | 9 612.7                          |

|                      |                |  |     | POTENTIALLY AFFECTED |         | TOTAL POTENTIALLY AFFECTED | Total in AOI |
|----------------------|----------------|--|-----|----------------------|---------|----------------------------|--------------|
| Estimated population |                | Inhabitants  | No. | NA                   | ~ 20    | ~20                        | ~ 13 000     |
| Assets               | Built-up       | Residential Buildings  | ha  | 0                    | 0       | 0                          | 2.5          |
|                      |                | Industrial buildings   | ha  | 0                    | 0       | 0                          | 94.6         |
|                      | Transportation | Helipad  | ha  | 0                    | 0       | 0                          | 0.04         |
|                      |                | Highways   | km  | 0                    | 0.8     | 0.8                        | 36.3         |
|                      |                | Secondary Road   | km  | 0                    | 0       | 0                          | 2.8          |
|                      |                | Local Road   | km  | 0                    | 0.1     | 0.1                        | 134.2        |
|                      |                | Cart Track   | km  | 0.2                  | 1.1     | 1.2                        | 120.8        |
|                      |                | Long-distance railways                                       | km  | 0                    | 0       | 0                          | 18.3         |
|                      | Facilities     | Constructions for mining or extraction                       | ha  | 19.6                 | 44.4    | 63.9                       | 176.7        |
|                      |                | Long-distance pipelines, communication and electricity lines | km  | 0                    | 0       | 0                          | 14.6         |
|                      | Land use       | Inland wetlands  | ha  | 1 362.8              | 2 193.9 | 3 556.8                    | 5 169.2      |
|                      |                | Shrub and/or herbaceous vegetation association               | ha  | 786.1                | 1 914.2 | 2 700.2                    | 11 100.2     |
|                      |                | Heterogeneous agricultural areas                             | ha  | 624.2                | 587.9   | 1 212.1                    | 3 954.1      |
|                      |                | Forests  | ha  | 64.8                 | 250.5   | 315.4                      | 32 291.3     |
|                      |                | Open spaces with little or no vegetation                     | ha  | 6.5                  | 4.7     | 11.2                       | 13.1         |
|                      |                | Other  | ha  | 3.0                  | 1 814.1 | 1 817.1                    | 3 635.8      |

\* Corresponds to the water observed in the most recent satellite imagery, excluding permanent water

\*\* Corresponds to the geographic union (and NOT the sum) of all Crisis Information extents.

Disclaimer:

Full disclaimer and other helpful information available in the online manual:

<https://mapping.emergency.copernicus.eu/about/rapid-mapping-manual/>

© European Union / Copernicus Emergency Management Service

Data Access:

All data displayed on the map(s), as well as Land Use - Land Cover layer(s), are available in the Crisis Information Package and the Base Layer Package (for reference data). The table above is available in editable format in the Crisis Information Package. All products and data are also available for download on the portal.

Estimated Population:

Estimated population is based on Copernicus Global Human Settlement Layer (GHSL) dataset. Additional population datasets and analysis are available in the summary table.

Data Sources:

Base Vector Layers: OpenStreetMap © OpenStreetMap contributors (2026); Wikimapia.org; GeoNames 2015; © EuroGeographics, © TurkStat. Source: European Commission – Eurostat/GISCO, 2024. Globe Land 30 (2010), Copernicus Global Land Service: Land Cover (2019).

Inset Maps: Natural Earth 2023; HydroLAKES 2016 by HydroSHEDS;

© EuroGeographics, © TurkStat. Source: European Commission – Eurostat/GISCO, 2024.

Digital Elevation Model:

FABDEM (ForestAndBuildingsremovedCopernicusDEM) removes building and tree height biases from the Copernicus GLO 30 Digital Elevation Model (DEM) (Airbus, 2020).

Access to the portal

