



EMSR857 - AOI11
Flood in Mozambique and South Africa
BARRAGEM DE MACARRETANE

Situation as of 25/01/2026 08:19 UTC
Grading - Overview map 01



Flood trace
19.4 ha
Flooded area
183.9 ha



Potentially affected
population
~ 1,400

Affected Built-up and Transportations



Built-Up
1,635 No.



Road
11.0 km



Railway
0.02 km

Crisis Information

Flooded Area

Flood trace

Built Up Grading

Damaged

Possibly damaged

Transportation Grading

Road, Damaged

Road, Possibly damaged

Railway, Possibly damaged

Main road, No visible damage

Local road, No visible damage

Track, No visible damage

Railway, No visible damage

General Information

Area of Interest

Detail map

Not Analysed

Hydrography

Lake, River

Event: Heavy rain that started in December, has caused several floods in Mozambique. The event is ongoing. Copernicus EMS Rapid Mapping is requested to provide initial rough estimation and flood extent emergency mapping.

Data sources and analysis: Pre-event image: ESRI World Imagery © DigitalGlobe (acquired on 07/05/2025, resolution 1 m). Post-event image: WorldView-3 © Vantor (2026), (acquired on 25/01/2026 at 08:19 UTC, resolution 0.5 m). This image is used as background image. All images are provided under COPERNICUS by the European Union and ESA, all rights reserved.

The thematic layer has been derived from post-event satellite image using a semi-automatic approach.

Map produced by Telespazio Iberica released by e-GEOS on the 25/01/2026.

Details on this activation and service conditions available through the QR code or at the link: <https://mapping.emergency.copernicus.eu/activations/EMSR857>

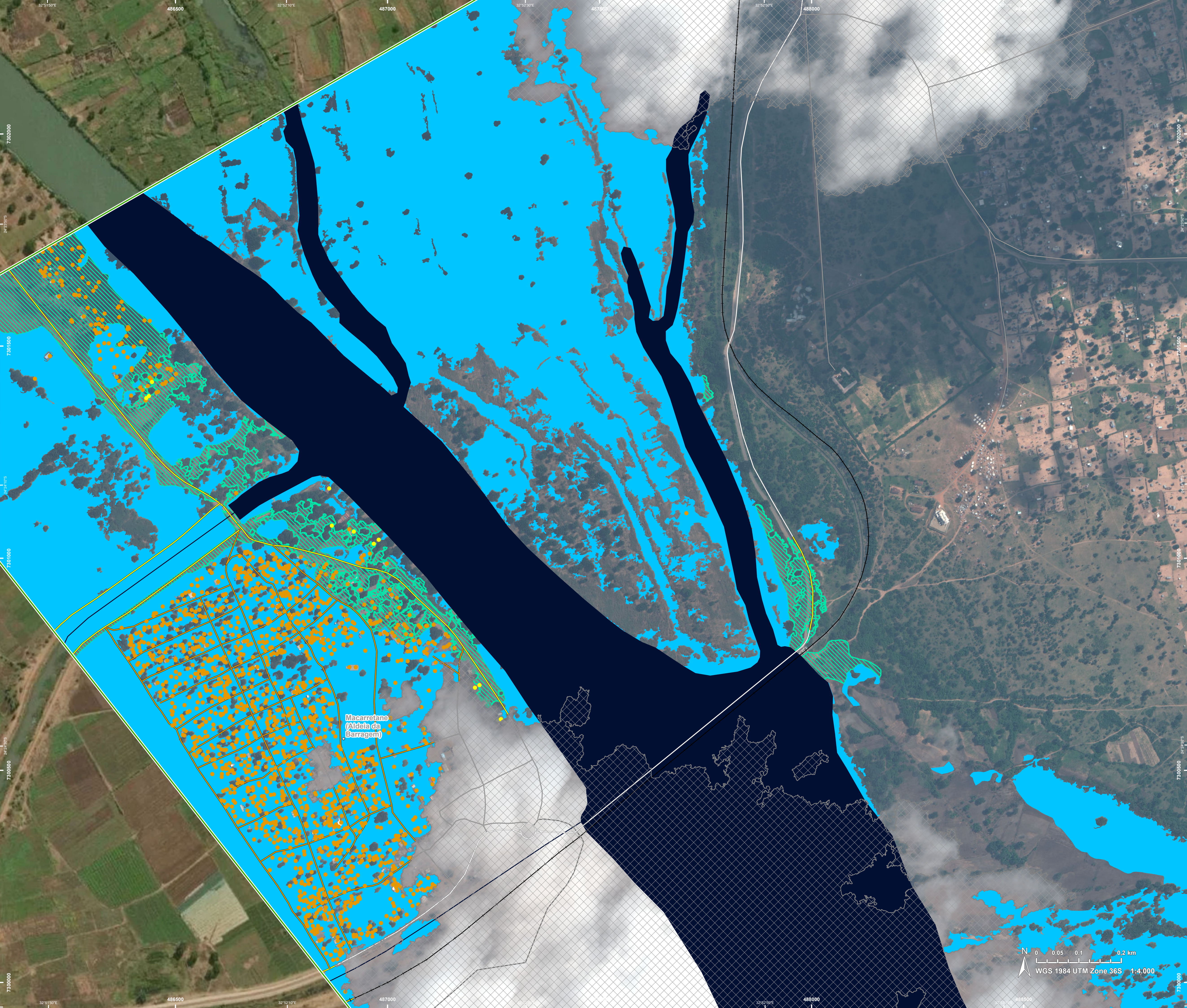


PROGRAMME OF THE
EUROPEAN UNION



Copernicus
Europe's eyes on Earth





EMSR857 - AO11
Flood in Mozambique and South Africa
BARRAGEM DE MACARRETANE

Situation as of 25/01/2026 08:19 UTC
Grading - Detail map 02



- Crisis Information**
- Flooded Area
 - Flood trace
- Built Up Grading**
- Damaged
 - Possibly damaged
- Transportation Grading**
- Road, Damaged
 - Road, Possibly damaged
 - Railway, Possibly damaged
- General Information**
- Area of Interest
 - Not Analysed
- Hydrography**
- Lake, River
- Legend**
- Main road, No visible damage
 - Local road, No visible damage
 - Track, No visible damage
 - Railway, No visible damage

Event: Heavy rain that started in December, has caused several floods in Mozambique. The event is ongoing. Copernicus EMS Rapid Mapping is requested to provide initial rough estimation and flood extent emergency mapping.

Data sources and analysis: Pre-event image: ESRI World Imagery © DigitalGlobe (acquired on 07/05/2025, resolution 1 m).
Post-event image: WorldView-3 © Vantor (2026), (acquired on 25/01/2026 at 08:19 UTC, resolution 0.5 m).
This image is used as background image.
All images are provided under COPERNICUS by the European Union and ESA, all rights reserved.

The thematic layer has been derived from post-event satellite image using a semi-automatic approach.

Map produced by Telespazio Iberica released by e-GEOS on the 25/01/2026.

Details on this activation and service conditions available through the QR code or at the link: <https://mapping.emergency.copernicus.eu/activations/EMSR857>



Consequences within the AOI

| | | | Unit of measurement | LATEST IMPACT | |
|--------------------|--------------------------|--|---------------------|----------------------------|-------|
| | | | | Imagery-based observation* | |
| Crisis information | Flood trace | | ha | | 19,4 |
| | Flooded area | | ha | | 183,9 |
| | Maximum of all extents** | | ha | | 203,3 |

| Estimated population | | Inhabitants | No. | Destroyed | Damaged | Possibly damaged*** | Total affected**** | Total in AOI |
|----------------------|----------------|--|-----|-----------|---------|---------------------|--------------------|--------------|
| Assets | | Built-up | | | | | ~ 1.400 | ~ 12.000 |
| | | Residential Buildings | No. | 0 | 1.624 | 11 | 1.635 | 7.346 |
| | Transportation | Secondary Road | km | 0 | 0 | 0,3 | 0,3 | 5,4 |
| | | Local Road | km | 0 | 7,2 | 0,8 | 7,9 | 16,5 |
| | | Cart Track | km | 0 | 1,0 | 1,9 | 2,8 | 3,7 |
| | | Long-distance railways | km | 0 | 0 | 0,02 | 0,02 | 5,4 |
| | Facilities | Long-distance pipelines, communication and electricity lines | km | 0 | 0 | 0 | 0 | 1,1 |
| | | Dams | km | 0 | 0 | 0 | 0 | 0,7 |
| | Land use | Heterogeneous agricultural areas | ha | | | | 96,2 | 516,6 |
| | | Other | ha | | | | 43,0 | 327,8 |
| | | Forests | ha | | | | 40,2 | 427,6 |
| | | Inland wetlands | ha | | | | 12,2 | 49,3 |
| | | Shrub and/or herbaceous vegetation association | ha | | | | 11,7 | 193,5 |
| | | Open spaces with little or no vegetation | ha | | | | 0 | 5,3 |

* Corresponds to the water surface observed in the most recent satellite imagery, excluding permanent water.

** Corresponds to the geographic union (and NOT the sum) of all Crisis Information layers.

*** It is intersected with the population and asset datasets to estimate the impacts.

**** Sum of all damage classes

Disclaimer:

Full disclaimer and other helpful information available in the online manual:

<https://mapping.emergency.copernicus.eu/about/rapid-mapping-manual/>

© European Union / Copernicus Emergency Management Service

Data Access:

All data displayed on the map(s), as well as Land Use - Land Cover layer(s), are available in the Crisis Information Package and the Base Layer Package (for reference data). The table above is available in editable format in the Crisis Information Package. All products and data are also available for download on the portal.

Estimated Population:

Estimated population is based on Copernicus Global Human Settlement Layer (GHSL) dataset. Additional population datasets and analysis are available in the summary table.

Data Sources:

Base Vector Layers: OpenStreetMap © OpenStreetMap contributors (2026); Wikimapia.org; GeoNames 2015; © EuroGeographics, © TurkStat. Source: European Commission – Eurostat/GISCO, 2024. Globe Land 30 (2010), Copernicus Global Land Service: Land Cover (2019).

Inset Maps: Natural Earth 2023; HydroLAKES 2016 by HydroSHEDS;

© EuroGeographics, © TurkStat. Source: European Commission – Eurostat/GISCO, 2024.

Access to the portal

