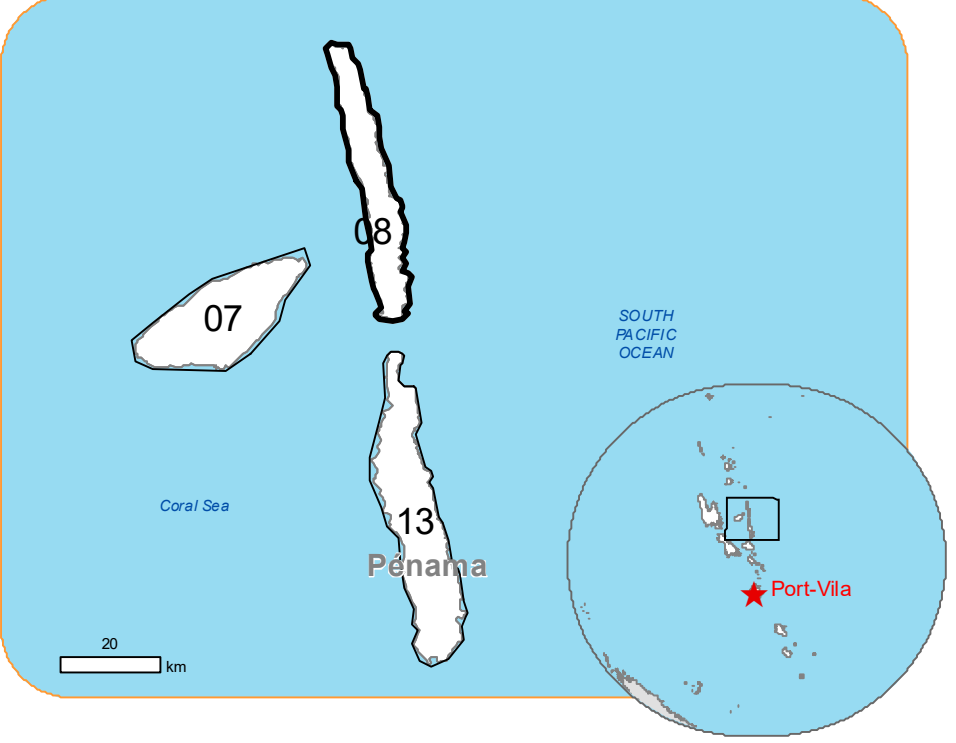


EMSR702 - AOI08
Storm in Vanuatu
MAEWO

Situation as of 29/10/2023 23:09 UTC
Grading - Overview map 01





Potentially affected population
Not available

Affected Built-up and Transportations



Built-up
237 No.



Facilities
0.2 ha

Built Up Grading

- Destroyed
- Damaged
- Possibly damaged

Facilities Grading

- Possibly damaged

Transportation Grading

- Local road, No visible damage
- Track, No visible damage
- Airfield runway, No visible damage

General Information

- Area of Interest
- Detail map
- Not Analysed

Administrative boundaries

- Province

Placenames

- Placename

Hydrography

- River
- Stream

Event: In the evening of 24 October 2023 local time, the Vanuatu archipelago was hit by the passage of a new tropical cyclone, named LOLA, with winds of up to 145 km/h. The cyclone has passed Solomon Island, and will have an impact on parts of Vanuatu. The event is on-going and increasing over the next 48 hours with very heavy rainfall, strong wind and storm surge are forecast over the whole Vanuatu with damage expected to affect buildings and infrastructure. Copernicus EMS Rapid Mapping is requested to provide damage assessment emergency mapping.


Data sources and analysis: Pre-event image: Pléiades-1A/B © CNES (2021), distributed by Airbus DS (acquired on 25/06/2021 at 23:07 UTC, resolution 0.5 m).
Post-event image: Pléiades Neo © CNES (2023), distributed by Airbus DS (acquired on 29/10/2023 at 23:08 UTC and 23:09 UTC, resolution 0.3 m). These images are used as background images.
All images are provided under COPENICUS by the European Union and ESA, all rights reserved.
Base vector layers: OpenStreetMap © OpenStreetMap contributors (2023), Wikimapia.org, GeoNames 2015, Global Administrative Areas (2012), refined by the producer, Globe Land 30 (2010), Copernicus Global Land Service: Land Cover (2019).
Inset maps: JRC 2013, Natural Earth 2012, GeoNames 2015.

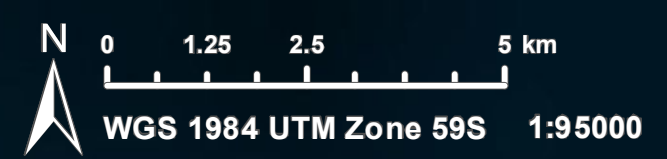
Population data: GHS Population Grid © European Commission, 2023
https://ghsl.jrc.ec.europa.eu/ghs_pop2023.php
Digital Elevation Model: SRTM (30 m) (NASA/USGS)

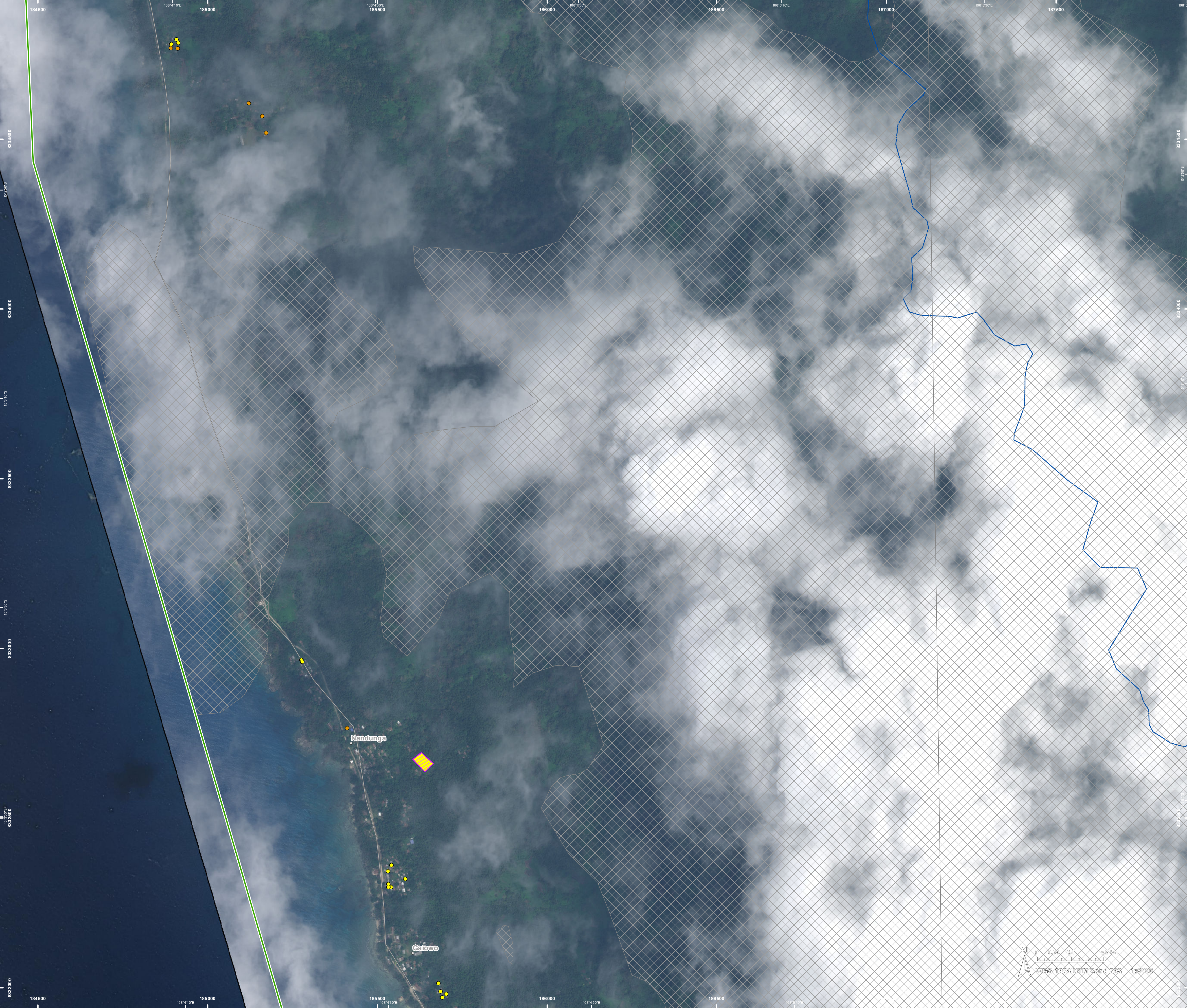
The thematic layer has been derived from post-event satellite image by means of visual interpretation.


Map produced by CLS released by e-GEOS on the 31/10/2023.

Details on this activation and service conditions available through the QR code or at the link:
<https://rapidmapping.emergency.copernicus.eu/EMSR702>

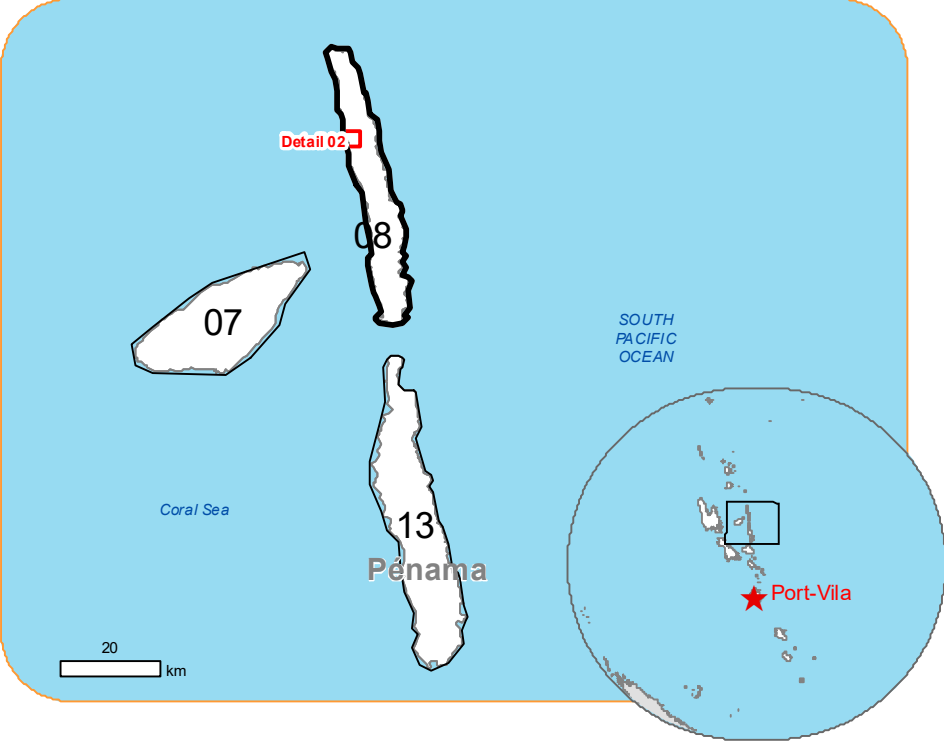







 **EMSR702 - AOI08**
Storm in Vanuatu
MAEWO

Situation as of 29/10/2023 23:09 UTC
Grading - Detail map 02





 **Potentially affected population**
Not available

Affected Built-up and Transportations

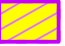
 **Built-up**
21 No.
(8.8% of total affected)

 **Facilities**
0.2 ha
(100% of total affected)


Built Up Grading

-  Damaged
-  Possibly damaged



Facilities Grading

-  Possibly damaged


Transportation Grading

-  Local road, No visible damage


General Information

-  Area of Interest
-  Not Analysed

Placenames

-  Placename

Hydrography

-  River

Event: In the evening of 24 October 2023 local time, the Vanuatu archipelago was hit by the passage of a new tropical cyclone, named LOLA, with winds of up to 145 km/h. The cyclone has passed Solomon Island, and will have an impact on parts of Vanuatu. The event is on-going and increasing over the next 48 hours with very heavy rainfall, strong wind and storm surge are forecast over the whole Vanuatu with damage expected to affect buildings and infrastructure. Copernicus EMS Rapid Mapping is requested to provide damage assessment emergency mapping.

Data sources and analysis: Pre-event image: Pléiades-1A/B © CNES (2021), distributed by Airbus DS (acquired on 25/06/2021 at 23:07 UTC, resolution 0.5 m).
Post-event image: Pléiades Neo © CNES (2023), distributed by Airbus DS (acquired on 29/10/2023 at 23:08 UTC and 23:09 UTC, resolution 0.3 m). These images are used as background images.
All images are provided under COPENICUS by the European Union and ESA, all rights reserved.

Base vector layers: OpenStreetMap © OpenStreetMap contributors (2023), Wikimapia.org, GeoNames 2015, Global Administrative Areas (2012), refined by the producer, Globe Land 30 (2010), Copernicus Global Land Service: Land Cover (2019).
Inset maps: JRC 2013, Natural Earth 2012, GeoNames 2015.

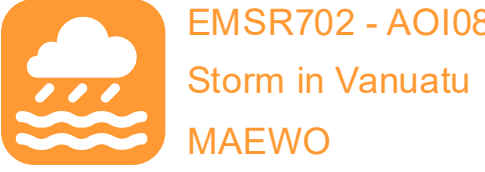
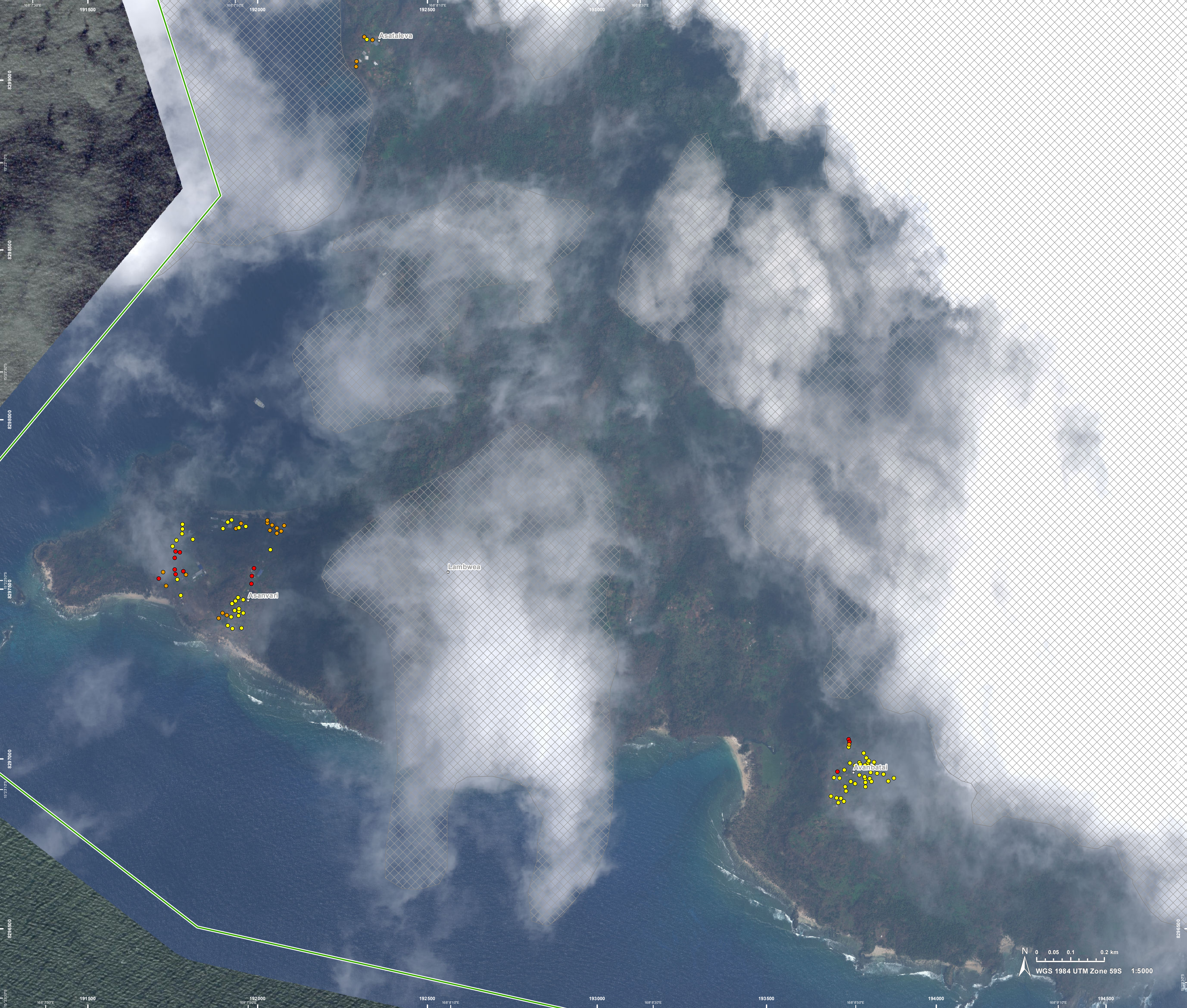
Population data: GHS Population Grid © European Commission, 2023
https://ghsl.jrc.ec.europa.eu/ghs_pop2023.php
Digital Elevation Model: SRTM (30 m) (NASA/USGS)

The thematic layer has been derived from post-event satellite image by means of visual interpretation.

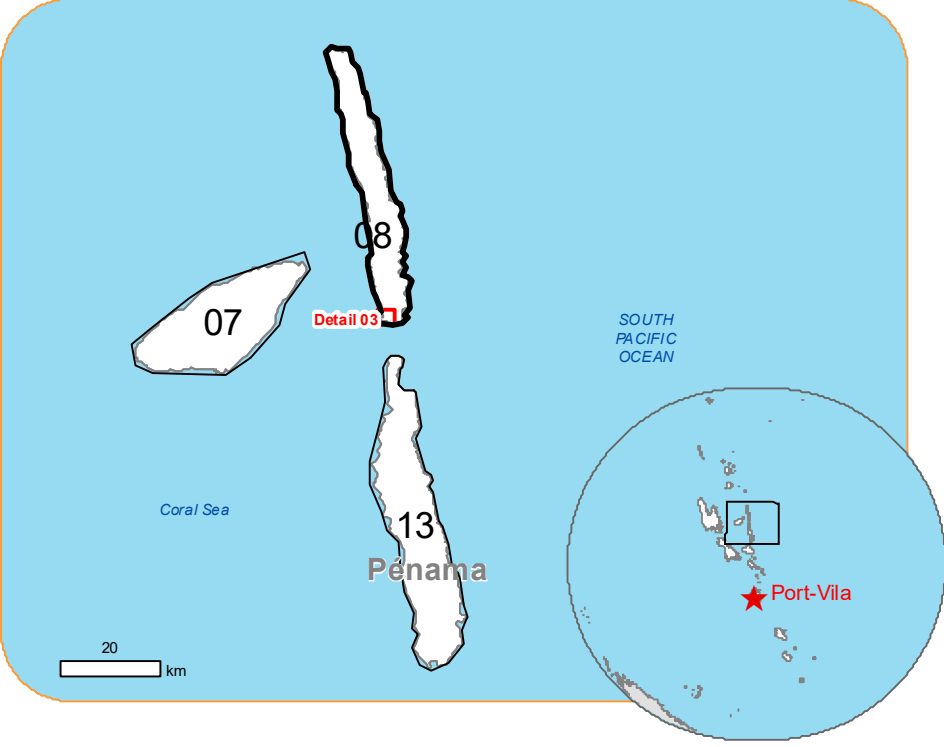
Map produced by CLS released by e-GEOS on the 31/10/2023.

Details on this activation and service conditions available through the QR code or at the link:
<https://rapidmapping.emergency.copernicus.eu/EMSR702>





Situation as of 29/10/2023 23:09 UTC
Grading - Detail map 03



Potentially affected population
Not available

Affected Built-up and Transportations

Built-up
100 No.
(42.2% of total affected)

Built Up Grading
● Destroyed
● Damaged
● Possibly damaged

General Information
□ Area of Interest
□ Not Analysed

Placenames
○ Placename

Event: In the evening of 24 October 2023 local time, the Vanuatu archipelago was hit by the passage of a new tropical cyclone, named LOLA, with winds of up to 145 km/h. The cyclone has passed Solomon Island, and will have an impact on parts of Vanuatu. The event is on-going and increasing over the next 48 hours with very heavy rainfall, strong wind and storm surge are forecast over the whole Vanuatu with damage expected to affect buildings and infrastructure. Copernicus EMS Rapid Mapping is requested to provide damage assessment emergency mapping.

Data sources and analysis: Pre-event image: Pléiades-1A/B © CNES (2021), distributed by Airbus DS (acquired on 25/06/2021 at 23:07 UTC, resolution 0.5 m).
Post-event image: Pléiades Neo © CNES (2023), distributed by Airbus DS (acquired on 29/10/2023 at 23:08 UTC and 23:09 UTC, resolution 0.3 m). These images are used as background images.
All images are provided under COPENICUS by the European Union and ESA, all rights reserved.

Base vector layers: OpenStreetMap © OpenStreetMap contributors (2023), Wikimapia.org, GeoNames 2015, Global Administrative Areas (2012), refined by the producer, Globe Land 30 (2010), Copernicus Global Land Service: Land Cover (2019).
Inset maps: JRC 2013, Natural Earth 2012, GeoNames 2015.

Population data: GHS Population Grid © European Commission, 2023
https://ghsl.jrc.ec.europa.eu/ghs_pop2023.php
Digital Elevation Model: SRTM (30 m) (NASA/USGS)

The thematic layer has been derived from post-event satellite image by means of visual interpretation.

Map produced by CLS released by e-GEOS on the 31/10/2023.

Details on this activation and service conditions available through the QR code or at the link:
<https://rapidmapping.emergency.copernicus.eu/EMSR702>



Consequences within the AOI							
	Unit of measurement		Destroyed	Damaged	Possibly damaged*	Total affected**	Total in AOI
Estimated population	Number of inhabitants					NA	~ 4,500
Built-up	Residential Buildings	No.	14	49	81	144	917
	School, university and research buildings	No.	0	0	0	0	7
	Hospital or institutional care buildings	No.	0	0	0	0	2
	Other non-residential buildings	No.	1	37	54	92	101
	Buildings used as places of worship and for religious activities	No.	0	1	0	1	3
Transportation	Airfield runways	km	0	0	0	0	0.9
	Local Road	km	0	0	0	0	32.3
	Cart Track	km	0	0	0	0	16.1
Facilities	Sport and recreation constructions	ha	0	0	0.2	0.2	0.2
Land use	Shrub and/or herbaceous vegetation association	ha	0	0	0	0	3,368.8
	Forests	ha	0	0	0	0	22,048.8
* Presence of damage proxies and proximity with destroyed/damaged asset ** Sum of all damage classes							

Disclaimer:

Full disclaimer and other helpful information available in the online manual:

<https://emergency.copernicus.eu/mapping/ems/online-manual-rapid-mapping-products>

© European Union / Copernicus Emergency Management Service

Data access:

All data displayed on the map(s), as well as the Physiography and Land Use - Land Cover layers, are available in the Crisis Information Package and the Base Layer Package (for reference data).

The table above is available in editable format in the Crisis Information Package.

All products and data are also available for download on the portal.

Access to the portal



PROGRAMME OF THE
EUROPEAN UNION

