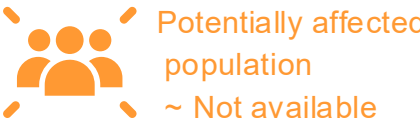
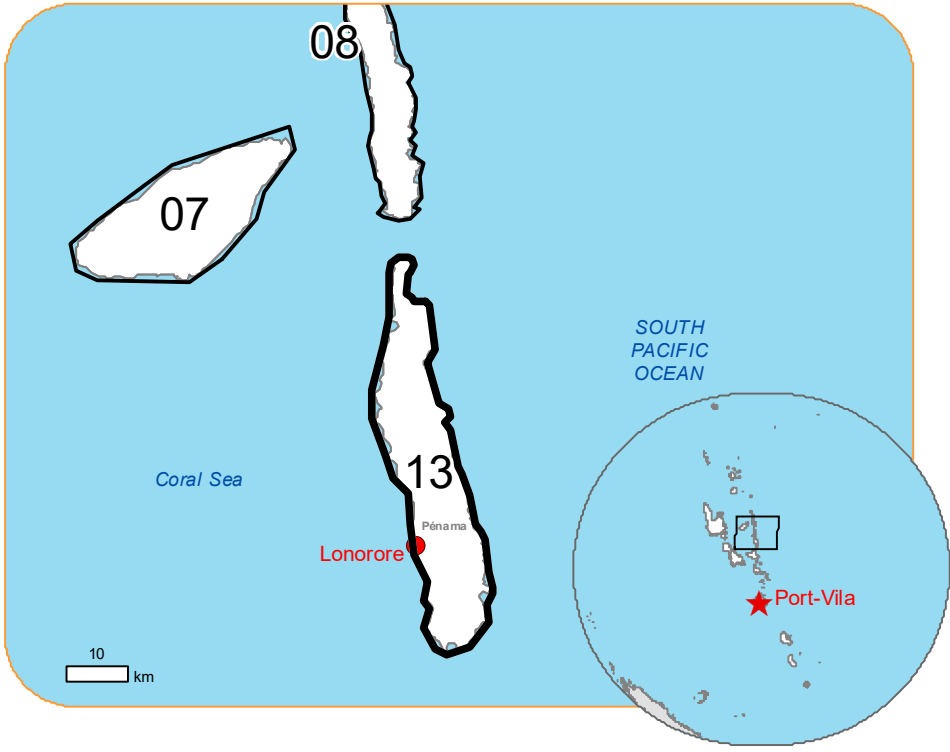
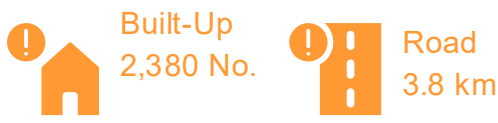


Situation as of 27/10/2023 22:49 UTC
Grading - Overview map 01



Affected Built-up and Transportations



Built Up Grading	General Information
<ul style="list-style-type: none">DestroyedDamagedPossibly damaged	<ul style="list-style-type: none">Area of InterestDetail mapImage FootprintNot Analysed
Transportation Grading	Administrative boundaries
<ul style="list-style-type: none">Main road, No visible damageTrack, No visible damageAirfield runway, No visible damageLocal road, No visible damageRoad, DamagedRoad, Possibly damaged	<ul style="list-style-type: none">Province
	Placenames
	<ul style="list-style-type: none">Placename
	Hydrography
	<ul style="list-style-type: none">RiverStream

Event: In the evening of 24 October 2023 local time, the Vanuatu archipelago was hit by the passage of a new tropical cyclone, named LOLA, with winds of up to 145 km/h. The cyclone has passed Solomon Island, and will have an impact on parts of Vanuatu. The event is on-going and increasing over the next 48 hours with very heavy rainfall, strong wind and storm surge are forecast over the whole Vanuatu with damage expected to affect buildings and infrastructure. Copernicus EMS Rapid Mapping is requested to provide damage assessment emergency mapping.

Data sources and analysis: Pre-event image: Pléiades-1A/B © CNES (2022, 2023), distributed by Airbus DS (acquired on 17/08/2022 at 23:25 UTC, the 27/05/2023 at 22:54 UTC, resolution 0.5 m). Post-event image: Pléiades-1A/B © CNES (2023), distributed by Airbus DS (acquired on 27/10/2023 at 22:49 UTC, resolution 0.5 m). All images are provided under COPERNICUS by the European Union and ESA, all rights reserved.

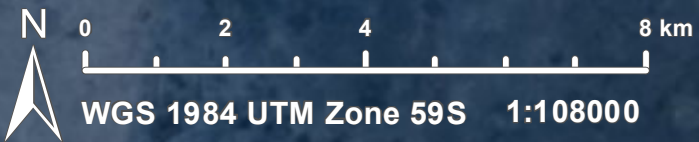
Base vector layers: OpenStreetMap © OpenStreetMap contributors (2023), Wikimapia.org, GeoNames 2015. Global Administrative Areas (2012), refined by the producer, Copernicus Global Land Service: Land Cover Inset maps: JRC 2013, Natural Earth 2012, GeoNames 2015.

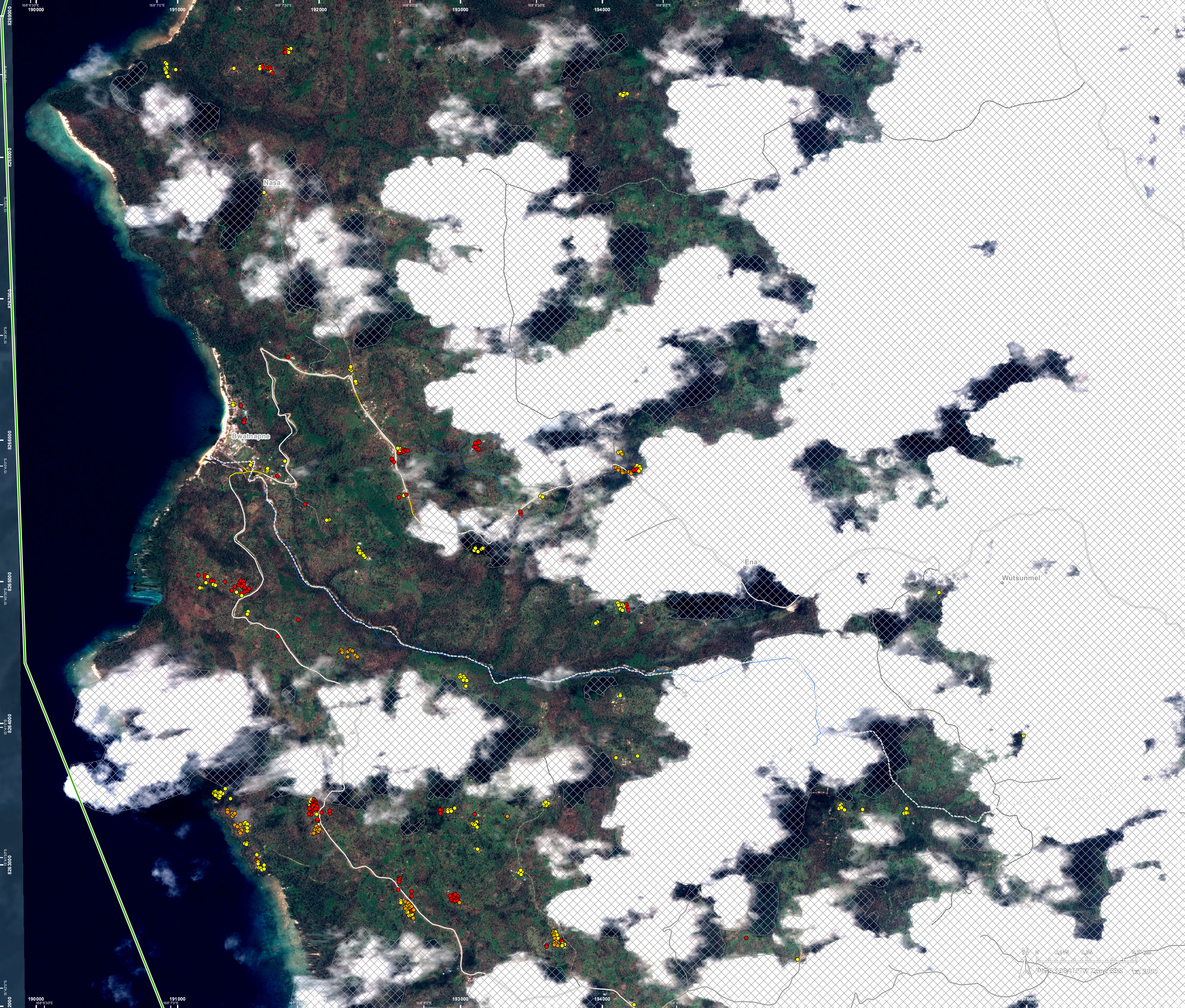
Population data: GHS Population Grid © European Commission, 2023 https://ghsl.jrc.ec.europa.eu/ghs_pop2023.php Digital Elevation Model: SRTM (30 m) (NASA/USGS) provided under COPERNICUS by the European Union and ESA, all rights reserved.

The thematic layer has been derived from post-event satellite image by means of visual interpretation.

Map produced by CLS released by e-GEOS on the 29/10/2023.

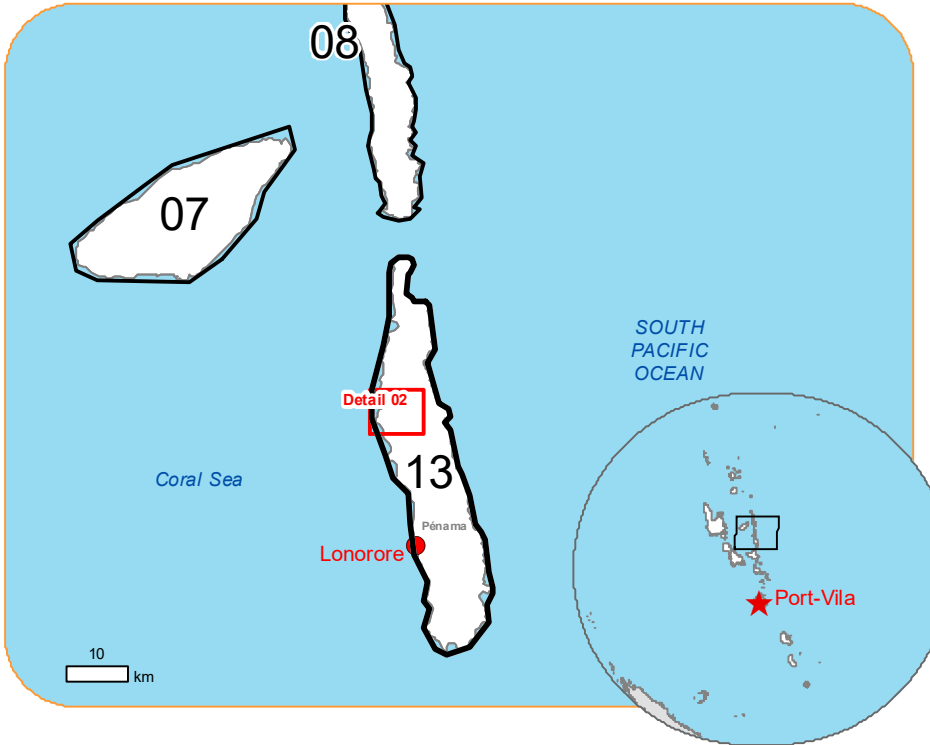
Details on this activation and service conditions available through the QR code or at the link: <https://rapidmapping.emergency.copernicus.eu/EMSR702>





EMSR702 - AO113
Storm in Vanuatu
PENTECOSTE

Situation as of 27/10/2023 22:49 UTC
Grading - Detail map 02



Potentially affected
population
~ Not available

Affected Built-up and Transportations

Built-Up
394 No.
(16.6% of total affected)

Road
0.6 km
(0.2% of total affected)

Built Up Grading

- Destroyed
- Damaged
- Possibly damaged

Transportation Grading

- Main road, No visible damage
- Track, No visible damage
- Local road, No visible damage
- Road, Possibly damaged

General Information

- Area of Interest
- Not
- Administrative boundaries
- Province
- Placenames
- Placename
- Hydrography
- Stream

Event: In the evening of 24 October 2023 local time, the Vanuatu archipelago was hit by the passage of a new tropical cyclone, named LOLA, with winds of up to 145 km/h. The cyclone has passed Solomon Island, and will have an impact on parts of Vanuatu. The event is on-going and increasing over the next 48 hours with very heavy rainfall, strong wind and storm surge are forecast over the whole Vanuatu with damage expected to affect buildings and infrastructure. Copernicus EMS Rapid Mapping is requested to provide damage assessment emergency mapping.

Data sources and analysis: Pre-event image: Pléiades-1A/B © CNES (2022, 2023), distributed by Airbus DS (acquired on 17/08/2022 at 23:25 UTC, the 27/05/2023 at 22:54 UTC, resolution 0.5 m). Post-event image: Pléiades-1A/B © CNES (2023), distributed by Airbus DS (acquired on 27/10/2023 at 22:49 UTC, resolution 0.5 m). All images are provided under COPENICUS by the European Union and ESA, all rights reserved.

Base vector layers: OpenStreetMap © OpenStreetMap contributors (2023), Wikimapia.org, GeoNames 2015. Global Administrative Areas (2012), refined by the producer, Copernicus Global Land Service: Land Cover (2019). Inset maps: JRC 2013, Natural Earth 2012, GeoNames 2015.

Population data: GHS Population Grid © European Commission, 2023 https://ghsl.jrc.ec.europa.eu/ghs_pop2023.php
Digital Elevation Model: SRTM (30 m) (NASA/USGS) provided under COPENICUS by the European Union and ESA, all rights reserved.

The thematic layer has been derived from post-event satellite image by means of visual interpretation.

Map produced by CLS released by e-GEOS on the 29/10/2023.

Details on this activation and service conditions available through the QR code or at the link:
<https://rapidmapping.emergency.copernicus.eu/EMSR702>



Consequences within the AOI							
	Unit of measurement		Destroyed	Damaged	Possibly damage*	Total affected**	Total in AOI
Estimated population	Number of inhabitants					NA	~ 21 000
Built-up	Residential Buildings	No.	776	413	1 163	2 352	12 867
	Other non-residential buildings	No.	6	13	8	27	179
	Non-residential farm buildings	No.	0	0	0	0	14
	Communication buildings, stations, terminals and associated buildings	No.	0	0	1	1	1
Transportation	Airfield runways	ha	0	0	0	0	11,9
	Airfield runways	km	0	0	0	0	1,8
	Secondary Road	km	0	0	0,5	0,5	51,0
	Local Road	km	0	0,5	1,4	1,8	121,1
	Cart Track	km	0	0	1,4	1,4	54,6
Facilities	Sport and recreation constructions	ha	0	0	0	0	0,8
Land use	Forests	ha	0	0	0	0	43 269,3
	Shrub and/or herbaceous vegetation association	ha	0	0	0	0	6 331,2
	Other	ha	0	0	0	0	7 427,9
<p>* Presence of damage proxies and proximity with destroyed/damaged asset</p> <p>** Sum of all damage classes</p>							

Disclaimer:

Full disclaimer and other helpful information available in the online manual:

<https://emergency.copernicus.eu/mapping/ems/online-manual-rapid-mapping-products>

© European Union / Copernicus Emergency Management Service

Data access:

All data displayed on the map(s), as well as the Physiography and Land Use - Land Cover layers, are available in the Crisis Information Package and the Base Layer Package (for reference data).

The table above is available in editable format in the Crisis Information Package.

All products and data are also available for download on the portal.

Access to the portal



PROGRAMME OF THE
EUROPEAN UNION

