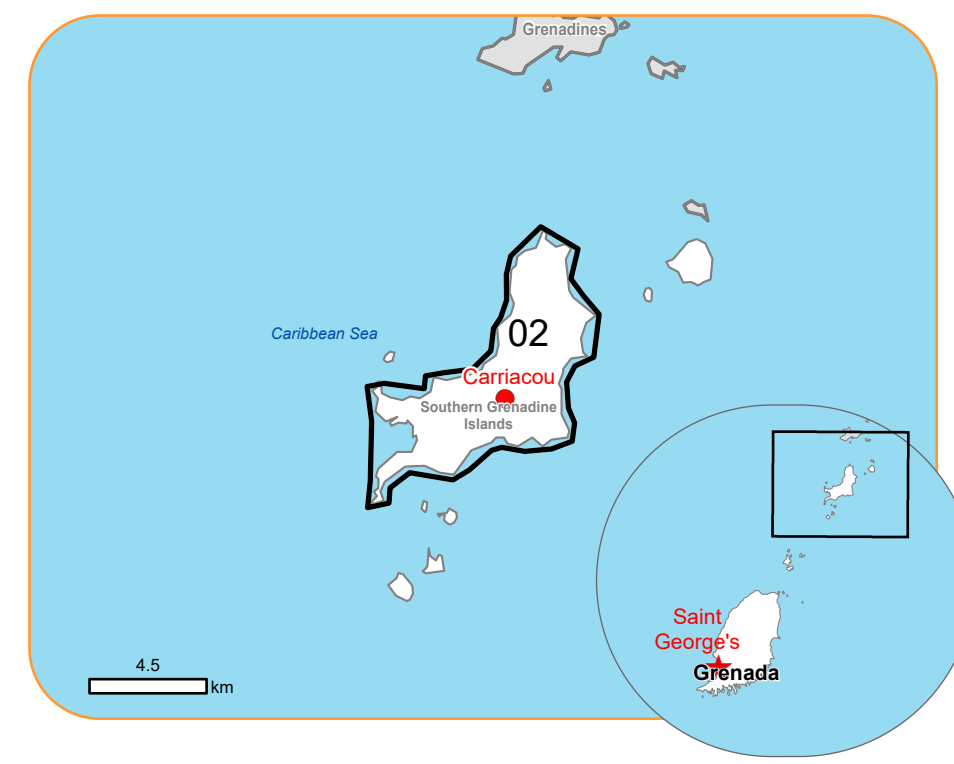


EMSR734 - AOI02

Storm in Grenada

CARRIACOU

Situation as of 02/07/2024 15:00 UTC
Grading - Overview map 01



 Potentially affected population
~ 4500

Affected Built-up and Transportations

 Built-Up
2,470 No.

- Crisis Information**
- Built Up Grading**
- Destroyed
 - Damaged
 - Possibly damaged
- Transportation Grading**
- Main road, No visible damage
 - Local road, No visible damage
 - Track, No visible damage
 - Airfield runway, No visible damage
- General Information**
- Area of Interest
 - Detail map
 - Not Analysed
- Placenames**
- Placename
- Hydrography**
- Lake

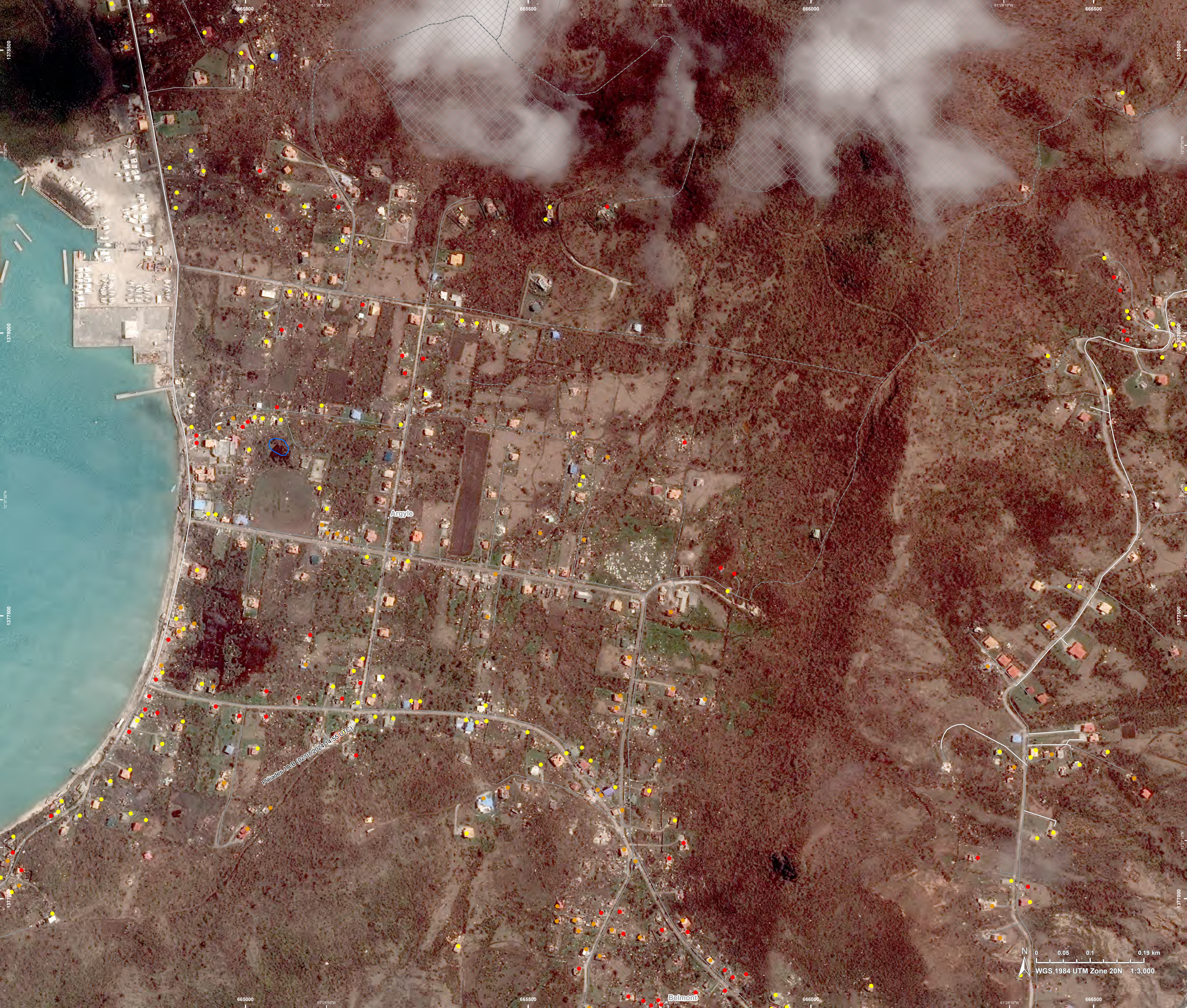
Event On the 01 July 2024 at about 06:00 UTC the Tropical Cyclone BERYL-24 is reported to have affected Barbados, Grenada, St Vincent and the Grenadine Islands. The event is still on-going and over the next 48 hours, very heavy rainfall, strong winds and storm surge are forecast over the Windward islands. Copernicus EMS Rapid Mapping is requested to provide initial rough estimation, flood extent and damage assessment emergency mapping.

Data sources and analysis: Pre-event image: ESRI World Imagery © DigitalGlobe (acquired on 14/01/2014, resolution 1.0 m). Post-event image: Pleiades-1A/B © CNES (2024), distributed by Airbus DS (acquired on 02/07/2024 at 15:00 UTC, resolution 0.5 m). This image is used as background image. All images are provided under COPERNICUS by the European Union and ESA, all rights reserved.

The thematic layer has been derived from post-event satellite image by means of visual interpretation.

Map produced by GMV released by e-GEOS on the 03/07/2024.

Details on this activation and service conditions available through the QR code or at the link: <https://rapidmapping.emergency.copernicus.eu/EMSR734>





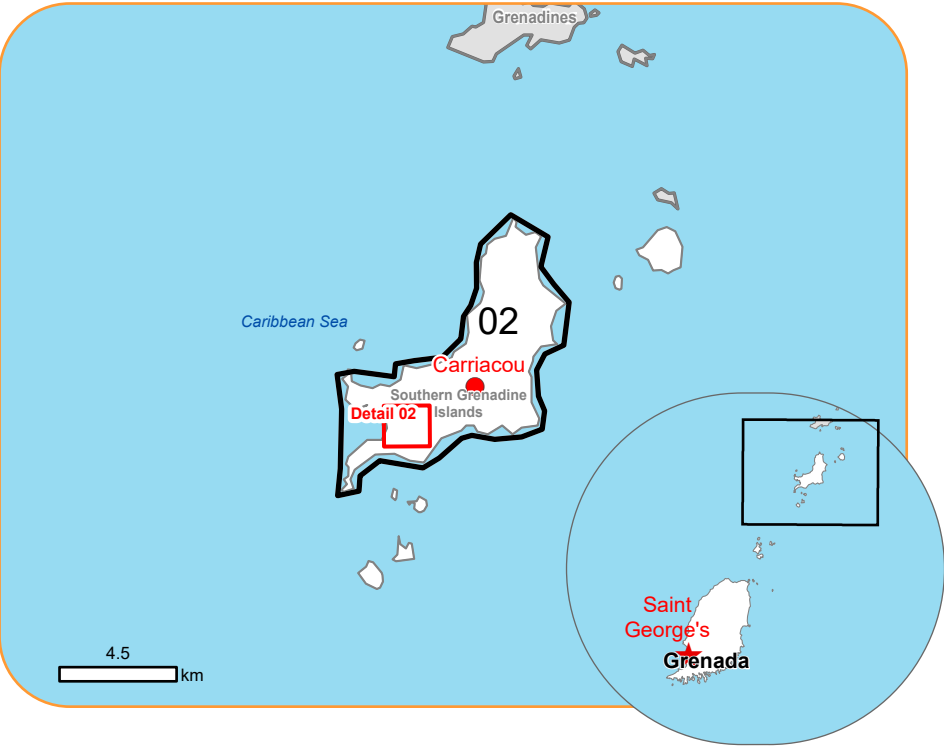
EMSR734 - AOI02

Storm in Grenada

CARRIACOU

Situation as of 02/07/2024 15:00 UTC

Grading - Detail map 02



- Crisis Information**
- Built Up Grading**
- Destroyed

Damaged

Possibly damaged
- Transportation Grading**
- Main road, No visible damage

Local road, No visible damage

Track, No visible damage
- General Information**
- Area of Interest

Not Analysed
- Placenames**
- Placename
- Hydrography**
- Lake

Event On the 01 July 2024 at about 06:00 UTC the Tropical Cyclone BERYL-24 is reported to have affected Barbados, Grenada, St Vincent and the Grenadine Islands. The event is still on-going and over the next 48 hours, very heavy rainfall, strong winds and storm surge are forecast over the Windward islands. Copernicus EMS Rapid Mapping is requested to provide initial rough estimation, flood extent and damage assessment emergency mapping.

Data sources and analysis: Pre-event image: ESRI World Imagery © DigitalGlobe (acquired on 14/01/2014, resolution 1.0 m).
Post-event image: Pleiades-1A/B © CNES (2024), distributed by Airbus DS (acquired on 02/07/2024 at 15:00 UTC, resolution 0.5 m).
This image is used as background image.
All images are provided under COPERNICUS by the European Union and ESA, all rights reserved.

The thematic layer has been derived from post-event satellite image by means of visual interpretation.

Map produced by GMV released by e-GEOS on the 03/07/2024.

Details on this activation and service conditions available through the QR code or at the link: <https://rapidmapping.emergency.copernicus.eu/EMSR734>



Consequences within the AOI							
	Unit of measurement		Destroyed	Damaged	Possibly damaged*	Total affected**	Total in AOI
Estimated population	Number of inhabitants					NA	~ 4,500
Built-up	Residential Buildings	No.	269	217	362	848	1,191
	School, university and research buildings	No.	0	0	2	2	2
	Hospital or institutional care buildings	No.	0	0	0	0	1
	Non-residential farm buildings	No.	18	4	5	27	31
	Other buildings not elsewhere classified	No.	0	0	1	1	1
	Building point	No.	94	60	62	216	293
	Communication buildings, stations, terminals and associated building	No.	1	0	0	1	1
	Unclassified	No.	523	228	624	1,375	1,890
Transportation	Airfield runways	ha	0	0	0	0	6.9
	Airfield runways	km	0	0	0	0	0.8
	Primary Road	km	0	0	0	0	15.4
	Secondary Road	km	0	0	0	0	10.1
	Local Road	km	0	0	0	0	67.8
	Cart Track	km	0	0	0	0	44.1
Facilities	Power plant constructions	ha	0	0	0	0	0.4
	Sport and recreation constructions	ha	0	0	0	0	1.3
	Local pipelines and cables	km	0	0	0	0	0.2
	Breakwater	km	0	0	0	0	0.02
Land use	Heterogeneous agricultural areas	ha	0	0	0	0	462.7
	Forests	ha	0	0	0	0	2,005.9
	Shrub and/or herbaceous vegetation association	ha	0	0	0	0	46.2
	Inland wetlands	ha	0	0	0	0	139.4
	Other	ha	0	0	0	0	1,716.4
* Presence of damage proxies and proximitywith destroyed/damaged asset							
** Sum of all damage classes							

Disclaimer:

Full disclaimer and other helpful information available in the online manual:
<https://emergency.copernicus.eu/mapping/ems/online-manual-rapid-mapping-products>
© European Union / Copernicus Emergency Management Service

Data Access:

All data displayed on the map(s), as well as the Physiography and Land Use - Land Cover layers, are available in the Crisis Information Package and the Base Layer Package (for reference data). The table above is available in editable format in the Crisis Information Package. All products and data are also available for download on the portal.

Estimated Population:

Estimated population is based on Copernicus Global Human Settlement Layer (GHSL) dataset. Additional population datasets and analysis are available in the summary table.

Data Sources:

Base vector layers: OpenStreetMap © OpenStreetMap contributors (2024), Wikimapia.org, GeoNames 2015, Global Administrative Areas (2012), refined by the producer. Copernicus Global Land Service: Land Cover (2019). Inset maps: JRC 2013, Natural Earth 2012, GeoNames 2015. Digital Elevation Model: FABDEM (ForestAndBuildingsremovedCopernicusDEM) removes building and tree height biases from the Copernicus GLO 30

Access to the portal



PROGRAMME OF THE
EUROPEAN UNION

