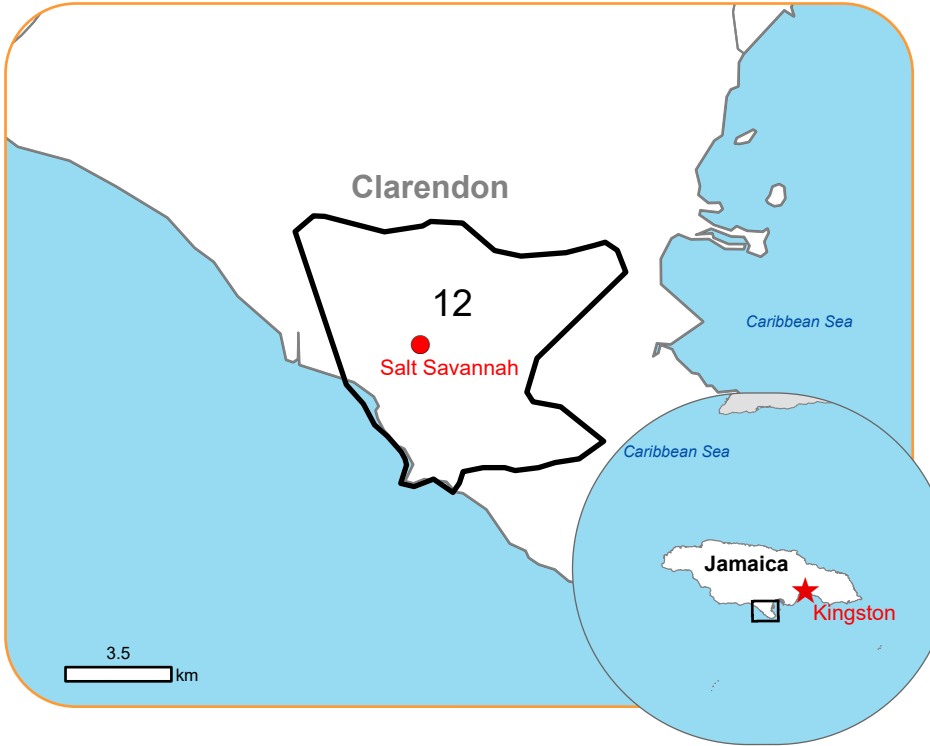




**Situation as of 07/07/2024 16:00 UTC**  
Grading - Overview map 01



**Affected Built-up and Transportations**



- Built Up Grading**
- Destroyed
  - Damaged
  - Possibly damaged
- Facilities Grading**
- Destroyed
- Transportation Grading**
- Road, Damaged
  - Road, Possibly damaged
  - Main road, No visible damage
  - Local road, No visible damage
  - Track, No visible damage
- General Information**
- Area of Interest
  - Detail map
  - Not Analysed
- Placenames**
- Placename
- Hydrography**
- Stream
  - Lake
  - River

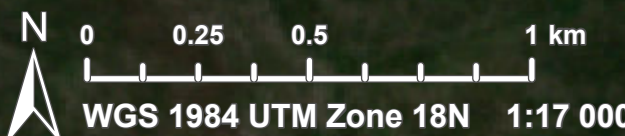
**Event:** On the 01 July 2024 at about 06:00 UTC the Tropical Cyclone BERYL-24 is reported to have affected Caribbean and Central America. The event is still on-going and over the next 48 hours, very heavy rainfall, strong winds and storm surge are forecast over the Windward islands. Copernicus EMS Rapid Mapping is requested to provide initial rough estimation, flood extent and damage assessment emergency mapping.

**Data sources and analysis:** Pre-event image: ESRI World Imagery © DigitalGlobe (acquired on 04/12/2023, resolution 1.0 m). Post-event image: Pléiades-1A/B © CNES (2024), distributed by Airbus DS (acquired on 07/07/2024 at 16:00 UTC, resolution 0.5 m). These images are used as background images. All images are provided under COPERNICUS by the European Union and ESA, all rights reserved.

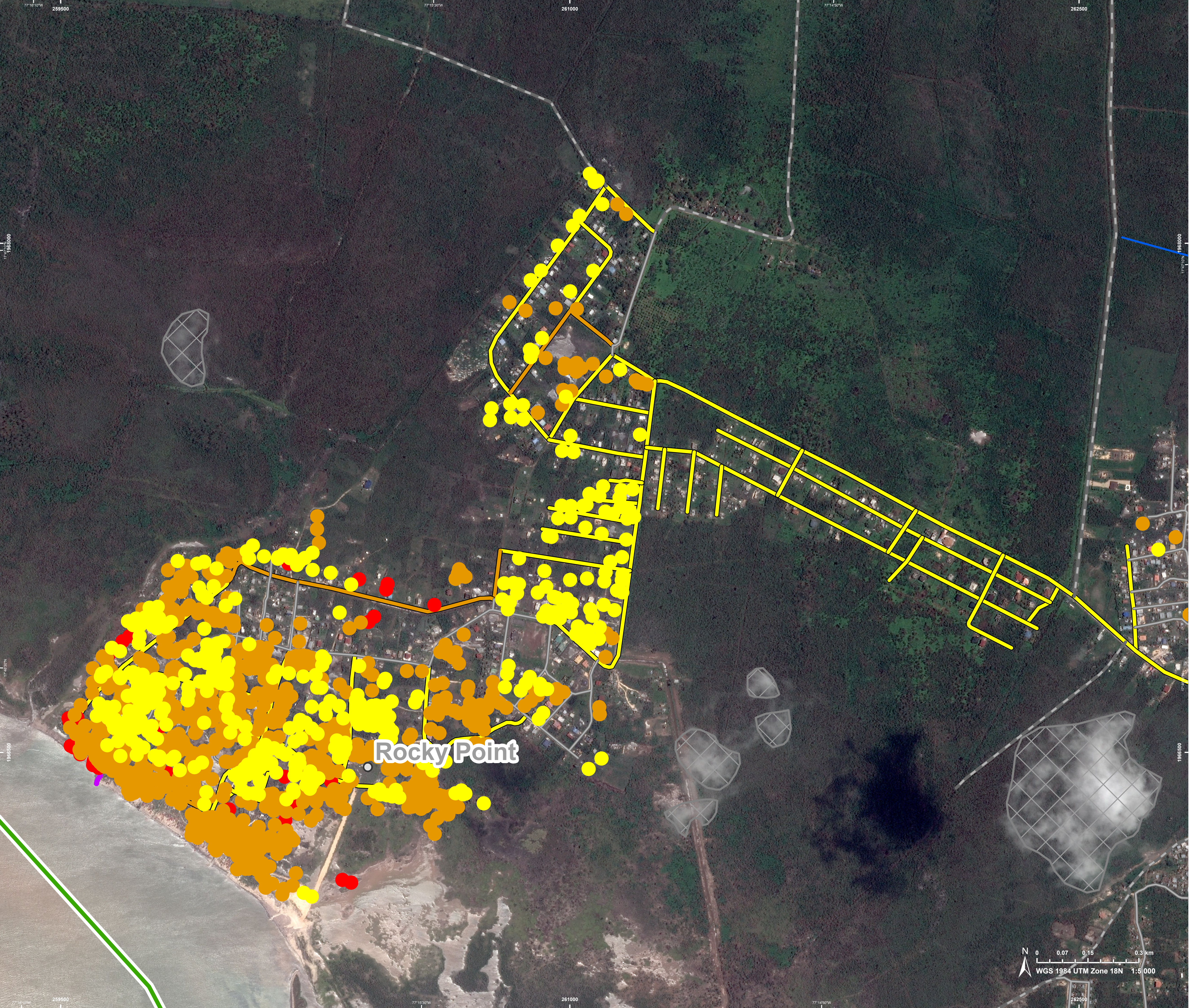
The thematic layer has been derived from post-event satellite image by means of visual interpretation.

Map produced by e-GEOS released by e-GEOS on the 08/07/2024.

Details on this activation and service conditions available through the QR code or at the link: <https://rapidmapping.emergency.copernicus.eu/EMSR734>

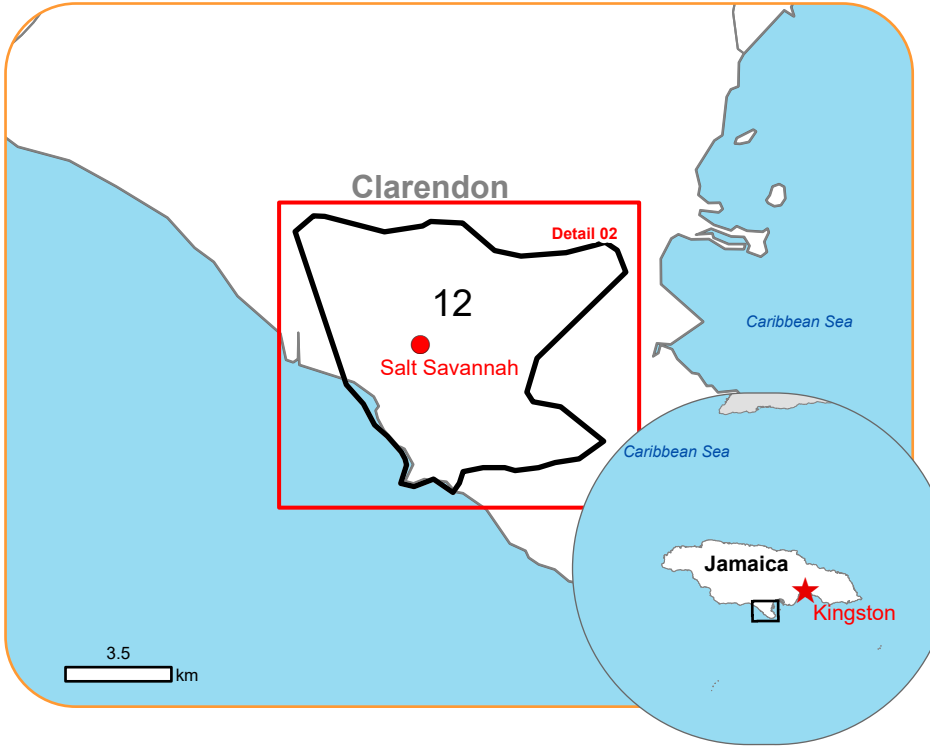






 EMSR734 - AOI12  
Storm in Jamaica  
SALT SAVANNAH

Situation as of 07/07/2024 16:00 UTC  
Grading - Detail map 02



- Built Up Grading**
- Destroyed
  - Damaged
  - Possibly damaged
- Facilities Grading**
- Destroyed
- Transportation Grading**
- Road, Damaged
  - Road, Possibly damaged
  - Local road, No visible damage
  - Track, No visible damage
- General Information**
- Area of Interest
  - Not Analysed
- Placenames**
- Placename
- Hydrography**
- Stream

**Event:** On the 01 July 2024 at about 06:00 UTC the Tropical Cyclone BERYL-24 is reported to have affected Caribbean and Central America. The event is still on-going and over the next 48 hours, very heavy rainfall, strong winds and storm surge are forecast over the Windward islands. Copernicus EMS Rapid Mapping is requested to provide initial rough estimation, flood extent and damage assessment emergency mapping.

**Data sources and analysis:** Pre-event image: ESRI World Imagery © DigitalGlobe (acquired on 04/12/2023, resolution 1.0 m). Post-event image: Pléiades-1A/B © CNES (2024), distributed by Airbus DS (acquired on 07/07/2024 at 16:00 UTC, resolution 0.5 m). These images are used as background images. All images are provided under COPERNICUS by the European Union and ESA, all rights reserved.

The thematic layer has been derived from post-event satellite image by means of visual interpretation .

Map produced by e-GEOS released by e-GEOS on the 08/07/2024.

Details on this activation and service conditions available through the QR code or at the link: <https://rapidmapping.emergency.copernicus.eu/EMSR734>



Consequences within the AOI							
	Unit of measurement		Destroyed	Damaged	Possibly damaged*	Total affected**	Total in AOI
Estimated population	Number of inhabitants					NA	~ 18 000
Built-up	Residential Buildings	No.	53	716	678	1 447	6 268
Transportation	Local Road	km	0	2.1	23.6	25.8	91.6
	Cart Track	km	0	0	11.1	11.1	58.6
	Primary Road	km	0	0	0.2	0.2	2.1
Facilities	Breakwater	ha	0.02	0	0	0.02	0.02
* Presence of damage proxies and proximitywith destroyed/damaged asset							
** Sum of all damage classes							

#### Disclaimer:

Full disclaimer and other helpful information available in the online manual:

<https://emergency.copernicus.eu/mapping/ems/online-manual-rapid-mapping-products>

© European Union / Copernicus Emergency Management Service

#### Data Access:

All data displayed on the map(s),

are available in the Crisis Information Package and the Base Layer Package (for reference data).

The table above is available in editable format in the Crisis Information Package.

All products and data are also available for download on the portal.

#### Estimated Population:

Estimated population is based on Copernicus Global Human Settlement Layer (GHSL) dataset.

Additional population datasets and analysis are available in the summary table.

#### Data Sources:

Base vector layers: OpenStreetMap © OpenStreetMap contributors (2024), Wikimapia.org, GeoNames 2015,

Global Administrative Areas (2012), refined by the producer. Copernicus Global Land Service: Land Cover (2019).

Inset maps: JRC 2013, Natural Earth 2012, GeoNames 2015.

Digital Elevation Model: FABDEM (ForestAndBuildingsremovedCopernicusDEM) removes building and tree height biases from the Copernicus GLO 30 © DLR e.V. (2014-2018) and

© Airbus Defence and Space GmbH (2020) provided under COPERNICUS by the European Union and ESA, all rights reserved.

Digital Elevation Model (DEM) (Airbus,2020).

Access to the portal



PROGRAMME OF THE  
EUROPEAN UNION

