



EMSR796 - AOI03
Flood in Ecuador
SAN ROQUE

Situation as of 30/04/2025 15:56:28 UTC
Grading MONIT02 - Overview map 01



Landslide 133.0 ha



Potentially affected population
~ 40

Affected Built-up and Transportations



Built-Up
22 No.

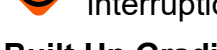


Road
9.3 km

Crisis Information



Landslide



Blocked road / interruption

Built Up Grading

Possibly damaged

Transportation Grading

Road, Destroyed

Road, Damaged

Road, Possibly damaged

Highway, No visible damage

Main road, No visible damage

Local road, No visible damage

Track, No visible damage

General Information

Area of Interest

Detail map

Not Analysed

Administrative Boundaries

Municipality

Placenames

Placename

Hydrography

Lake, River

Island

Event: On the 26 February 2025 at 16 :00 UTC, heavy rainfall affected western and coastal Ecuador causing floods and triggering landslides. The event is on-going, causing significant damage. Copernicus EMS Rapid Mapping is requested to provide damage assesment emergency mapping.

Data sources and analysis: Pre-event image: Pliades-1A/B © CNES (year of acquisition), distributed by Airbus DS (acquired on 20/06/2024 at 15:47 UTC, resolution 0.5 m). Post-event image: Pliades Neo © CNES (2025), distributed by Airbus DS (acquired on 14/04/2025 at 15:49 UTC, resolution 0.3 m). Pliades Neo © CNES (2025), distributed by Airbus DS (acquired on 16/04/2025 at 15:37 UTC, resolution 0.3 m). Pliades Neo © CNES (2025), distributed by Airbus DS (acquired on 30/04/2025 at 15:56 UTC, resolution 0.3 m). This image is used as background image.

All images are provided under COPERNICUS by the European Union and ESA, all rights reserved.

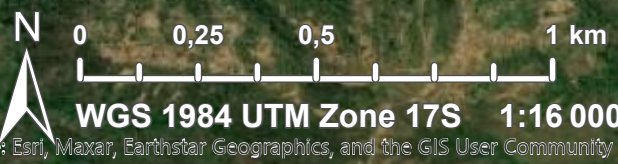
The thematic layer has been derived from post-event satellite image by means of visual interpretation.

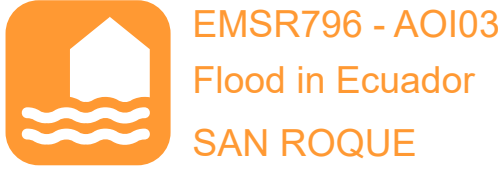
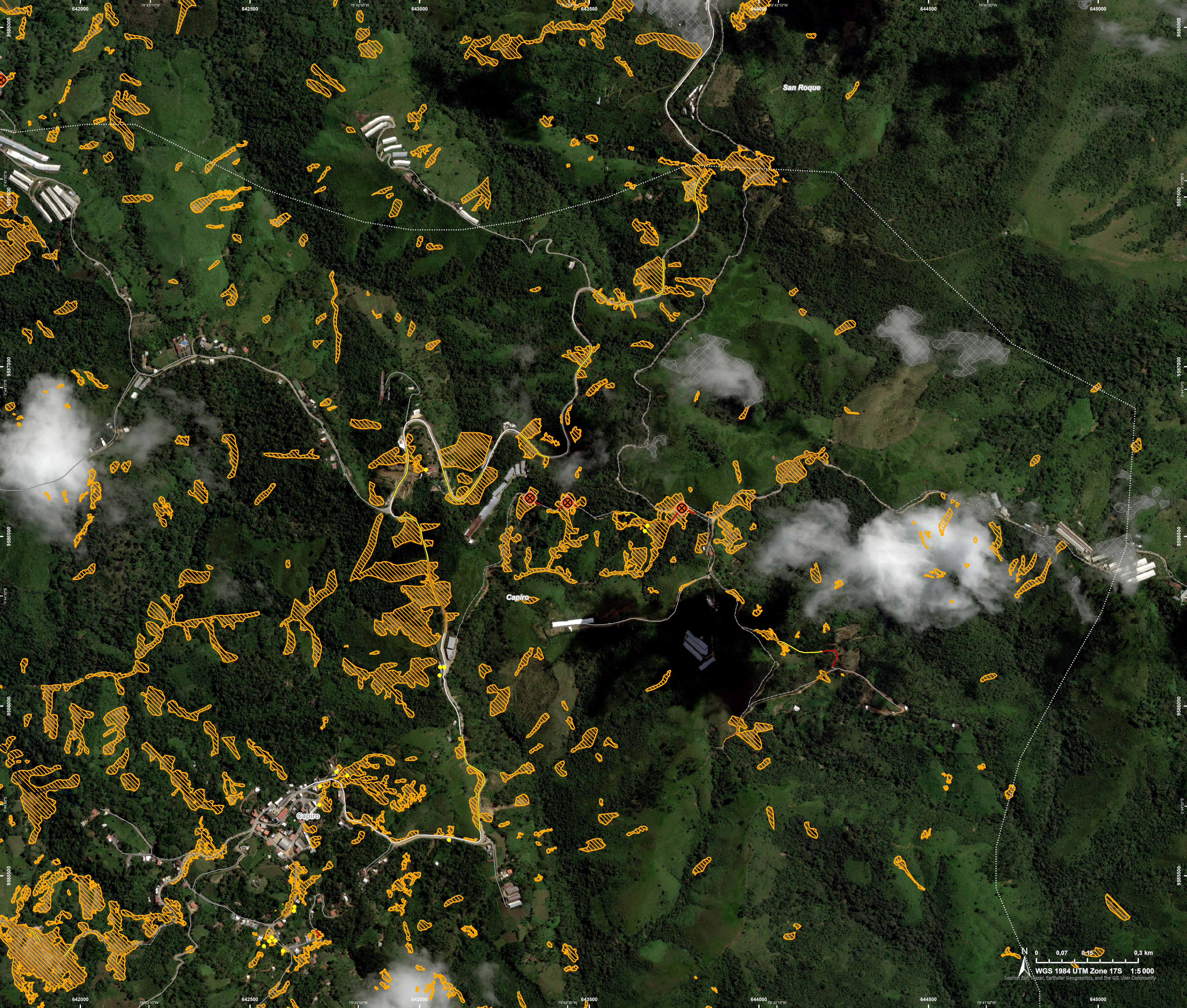
Map produced by CLS released by e-GEOS on the 01/05/2025.

Details on this activation and service conditions available through the QR code or at the link: <https://mapping.emergency.copernicus.eu/activations/EMSR789>



PROGRAMME OF THE
EUROPEAN UNION





Situation as of 30/04/2025 15:56:28 UTC
Grading MONIT02 - Detail map 02



- Crisis Information**

 - Landslide
 - Blocked road / interruption

Built Up Grading

 - Possibly damaged

Transportation Grading

 - Road, Destroyed
 - Road, Damaged
 - Road, Possibly damaged
 - Main road, No visible damage
 - Local road, No visible damage
 - Track, No visible damage
- General Information**

 - Area of Interest
 - Not Analysed

Administrative Boundaries

 - Municipality

Placenames

 - Placename

Hydrography

 - Lake, River
 - Island

Event: On the 26 February 2025 at 16 :00 UTC, heavy rainfall affected western and coastal Ecuador causing floods and triggering landslides. The event is on-going, causing significant damage. Copernicus EMS Rapid Mapping is requested to provide damage assesment emergency mapping.

Data sources and analysis: Pre-event image: Pléiades-1A/B © CNES (year of acquisition), distributed by Airbus DS (acquired on 20/06/2024 at 15:47 UTC, resolution 0.5 m). Post-event image: Pléiades Neo © CNES (2025), distributed by Airbus DS (acquired on 14/04/2025 at 15:49 UTC, resolution 0.3 m). Pléiades Neo © CNES (2025), distributed by Airbus DS (acquired on 16/04/2025 at 15:37 UTC, resolution 0.3 m). Pléiades Neo © CNES (2025), distributed by Airbus DS (acquired on 30/04/2025 at 15:56 UTC, resolution 0.3 m). This image is used as background image.

All images are provided under COPENICUS by the European Union and ESA, all rights reserved.

The thematic layer has been derived from post-event satellite image by means of visual interpretation.

Map produced by CLS released by e-GEOS on the 01/05/2025.

Details on this activation and service conditions available through the QR code or at the link: <https://mapping.emergency.copernicus.eu/activations/EMSR789>



Consequences within the AOI							
	Unit of measurement		Destroyed	Damaged	Possibly damaged*	Total affected**	Total in AOI
Landslide		ha					133.0
Ancillary Crisis Information	Blocked road / interruption	No.					6
Estimated population	Number of inhabitants					~ 40	~ 1 300
Built-up	Residential Buildings	No.	0	0	18	18	NA
	Other non-residential buildings	No.	0	0	4	4	NA
Transportation	Highways	km	0	0	0	0	0.6
	Secondary Road	km	0	0.4	0.9	1.3	4.8
	Local Road	km	0.8	2.2	3.0	6.0	42.1
	Cart Track	km	0.2	0.6	1.2	2.0	25.5
Land use	Forests	ha				118.7	3 889.6
	Shrub and/or herbaceous vegetation association	ha				14.3	655.0
* Presence of damage proxies and proximity with destroyed/damaged asset							
** Sum of all damage classes							

Disclaimer:

Full disclaimer and other helpful information available in the online manual:

<https://mapping.emergency.copernicus.eu/about/rapid-mapping-manual/>

© European Union / Copernicus Emergency Management Service

Data Access:

All data displayed on the map(s), as well as Land Use - Land Cover layer(s), are available in the Crisis Information Package and the Base Layer Package (for reference data).

The table above is available in editable format in the Crisis Information Package.

All products and data are also available for download on the portal.

Estimated Population:

Estimated population is based on Copernicus Global Human Settlement Layer (GHSL) dataset.

Additional population datasets and analysis are available in the summary table.

Data Sources:

Base Vector Layers: OpenStreetMap © OpenStreetMap contributors (2025); Wikimapia.org; GeoNames 2015;

Corine Land Cover (CLC) 2018; © EuroGeographics, © TurkStat. Source: European Commission – Eurostat/GISCO, 2021.

Digital Elevation Model:

FABDEM (ForestAndBuildingsremovedCopernicusDEM) removes building and tree height biases from the Copernicus GLO 30

Digital Elevation Model (DEM) (Airbus, 2020).

Access to the portal



PROGRAMME OF THE
EUROPEAN UNION

