

Situation as of 05/04/2025 08:34 UTC
Delineation - Overview map 01



Flooded area
219.1 ha

Potentially affected
population ~ 60

Potentially Affected Built-up and Transportations

Built-Up
28.4 ha

Road
0.7 km

- Estimated flood depth (m)**
- Below 0.50
 - 0.50 - 1.00
 - 1.00 - 2.00
 - 2.00 - 4.00
- General Information**
- Area of Interest
 - Detail map
- Administrative Boundaries**
- Province
 - Municipality
- Placenames**
- Placename
- Built-Up Area**
- Residential
 - Non residential
 - School, university and research buildings
 - Hospital or institutional care buildings
- Hydrography**
- Lake, River
- Facilities**
- Long-distance pipelines or lines
 - Dam
 - Power plant
 - Sport and recreation constructions
 - Dump Site
 - Water or Aquatic infrastructure
 - Dam
- Transportation**
- Highway
 - Main road
 - Local road
 - Track
 - Railway
 - Helipad

Event: On the 26 February 2025 at 16:00 UTC, heavy rainfall affected western and coastal Ecuador causing floods and triggering landslides. The event is on-going, causing significant damage. Copernicus EMS Rapid Mapping is requested to provide damage assessment emergency mapping.

Data sources and analysis: Pre-event image: Pléiades-1A/B © CNES (2021 and 2022), distributed by Airbus DS (acquired on 21/07/2021 at 15:40 UTC and on 23/12/2022 15:39 UTC, resolution 0.5 m). This image is used as background image. Post-event image: IE00 © copyright owned by ICEYE OY (acquired on 05/04/2025 at 08:34 UTC, resolution 2.5 m). All images are provided under COPERNICUS by the European Union and ESA, all rights reserved.

The thematic layer has been derived from post-event satellite image using a semi-automatic approach.

Please be aware that the thematic accuracy might be lower in urban and forested areas due to inherent limitations of the SAR analysis technique.

The flood depth information is based on the analysis of post-event satellite imagery and on Digital Elevation Model data. The flooded area corresponds to the water observed in the most recent satellite imagery, excluding the permanent water.

Map produced by GAF AG released by e-GEOS on the 05/04/2025.

Details on this activation and service conditions available through the QR code or at the link: <https://mapping.emergency.copernicus.eu/activations/EMSR796>





Situation as of 05/04/2025 08:34 UTC
Delineation - Detail map 02



Estimated flood depth (m)	Hydrography
<div>Below 0.50</div>	<div>Lake, River</div>
<div>0.50 - 1.00</div>	<div>Facilities</div>
<div>1.00 - 2.00</div>	<div>Long-distance pipelines or lines</div>
<div>2.00 - 4.00</div>	<div>Power plant</div>
<div>Administrative Boundaries</div>	<div>Sport and recreation constructions</div>
<div>Province</div>	<div>Water or Aquatic infrastructure</div>
<div>Municipality</div>	<div>Dam</div>
<div>Placenames</div>	<div>Transportation</div>
<div>Placename</div>	<div>Highway</div>
<div>Built-Up Area</div>	<div>Main road</div>
<div>Residential</div>	<div>Local road</div>
<div>Non residential</div>	<div>Track</div>
<div>School, university and research buildings</div>	<div>Railway</div>
<div>Hospital or institutional care buildings</div>	<div>Helipad</div>

Event: On the 26 February 2025 at 16:00 UTC, heavy rainfall affected western and coastal Ecuador causing floods and triggering landslides. The event is on-going, causing significant damage. Copernicus EMS Rapid Mapping is requested to provide damage assesment emergency mapping.

Data sources and analysis: Pre-event image: Pléiades-1A/B © CNES (2021 and 2022), distributed by Airbus DS (acquired on 21/07/2021 at 15:40 UTC and on 23/12/2022 15:39 UTC, resolution 0.5 m). This image is used as background image. Post-event image: IE00 © copyright owned by ICEYE OY (acquired on 05/04/2025 at 08:34 UTC, resolution 2.5 m). All images are provided under COPERNICUS by the European Union and ESA, all rights reserved.

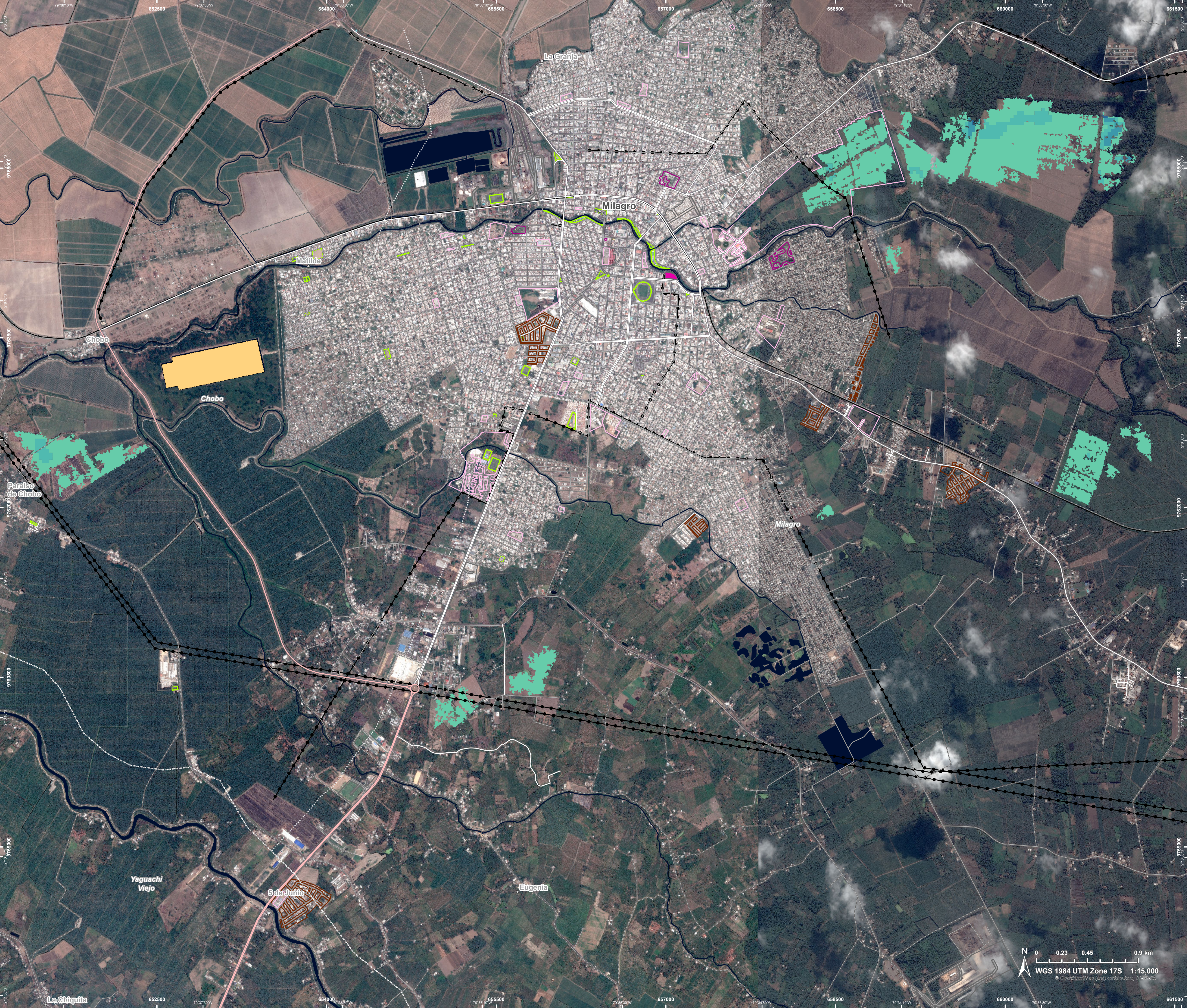
The thematic layer has been derived from post-event satellite image using a semi-automatic approach.

Please be aware that the thematic accuracy might be lower in urban and forested areas due to inherent limitations of the SAR analysis technique.

The flood depth information is based on the analysis of post-event satellite imagery and on Digital Elevation Model data. The flooded area corresponds to the water observed in the most recent satellite imagery, excluding the permanent water.

Map produced by GAF AG released by e-GEOS on the 05/04/2025.

Details on this activation and service conditions available through the QR code or at the link: <https://mapping.emergency.copernicus.eu/activations/EMSR796>



Consequences within the AOI				
		Unit of measurement	Affected	Total in AOI
Flooded area		ha		219.1
Estimated population	Number of inhabitants		~ 60	~ 270,000
Built-up	Residential Buildings	ha	0	376.5
	Office buildings	ha	0	1.0
	Wholesale and retail trade buildings	ha	0	0.2
	Industrial buildings	ha	0	100.8
	School, university and research buildings	ha	28.4	139.5
	Hospital or institutional care buildings	ha	0	4.9
	Cemetery	ha	0	11.5
Transportation	Helipad	ha	0	0.04
	Highways	km	0	62.5
	Primary Road	km	0	50.7
	Secondary Road	km	0	53.8
	Local Road	km	0.3	835.3
	Cart Track	km	0.5	598.2
	Long-distance railways	km	0	26.7
Facilities	Settling Basin	ha	0	25.2
	Dams	ha	0	0.5
	Power plant constructions	ha	0	0.6
	Sport and recreation constructions	ha	0	13.5
	Other civil engineering works not elsewhere classified	ha	0	4.6
	Long-distance pipelines, communication and electricity lines	km	0.5	172.6
	Dams	km	0	0.1
Land use	Heterogeneous agricultural areas	ha	113.8	19,527.6
	Inland wetlands	ha	69.3	5,360.2
	Forests	ha	22.1	14,140.6
	Shrub and/or herbaceous vegetation association	ha	10.2	1,778.7
	Other	ha	3.6	2,392.7

Disclaimer:

Full disclaimer and other helpful information available in the online manual:

<https://mapping.emergency.copernicus.eu/about/rapid-mapping-manual/>

© European Union / Copernicus Emergency Management Service

Data Access:

All data displayed on the map(s), as well as Land Use - Land Cover layer(s), are available in the Crisis Information Package and the Base Layer Package (for reference data).

The table above is available in editable format in the Crisis Information Package.

All products and data are also available for download on the portal.

Access to the portal

**Estimated Population:**

Estimated population is based on Copernicus Global Human Settlement Layer (GHSL) dataset.

Additional population datasets and analysis are available in the summary table.

Data Sources:

Base Vector Layers: OpenStreetMap © OpenStreetMap contributors (2025); Wikimapia.org; GeoNames (2015);

Global Administrative Areas (2022), refined by the producer, Globe Land 30 (2010), Copernicus Global Land Service: Land Cover (2019).

Inset Maps: Natural Earth 2023; HydroLAKES 2016 by HydroSHEDS;

© EuroGeographics, © TurkStat. Source: European Commission – Eurostat/GISCO, 2021.

Digital Elevation Model:

FABDEM (ForestAndBuildingsremovedCopernicusDEM) removes building and tree height biases from the Copernicus GLO 30

Digital Elevation Model (DEM) (Airbus, 2020).



PROGRAMME OF THE
EUROPEAN UNION

