

EMSR847 - AOI04
Storm in Jamaica
FAIRY HILLS

Pre-event situation

Reference - Overview map 01



Population
~ 11000

Built-up and Transportations



Road
71.0 km



Built-Up
4,017 No.

General Information

Area of Interest

Placenames

Placename

Built-Up Area

Residential
Non residential

Facilities

Long-distance pipelines or lines
Local pipelines or lines

Mining or extraction site

Transportation

Main road
Local road
Track

Event: On 25 October 2025 at 20:00, Tropical Storm Melissa is forecast to affect Jamaica and the southern peninsula of Haiti. The event is expected to cause damage to housing, infrastructure, and transport networks due to heavy rainfall, strong winds, flooding, and landslides. Hurricane conditions are forecast for Jamaica during the weekend and subsequently for the southern peninsula of Haiti. Copernicus EMS Rapid Mapping is requested to provide flood extent and damage assessment emergency mapping.

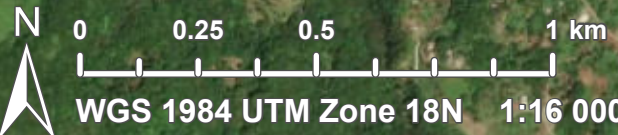
Data sources and analysis: Pre-event image: WorldView-2 © Vantor (2024), provided by European Space Imaging (acquired on 04/03/2024 at 15:48 UTC, resolution 0.4 m).

This image is used as background image.
All images are provided under COPERNICUS by the European Union and ESA, all rights reserved.

The present map shows basic topographic features derived from public datasets, refined by means of visual interpretation of pre-event imagery.

Map produced by e-GEOS released by e-GEOS on the 26/10/2025.

Details on this activation and service conditions available through the QR code or at the link: <https://mapping.emergency.copernicus.eu/activations/EMSR847>



Exposure within the AOI

		Unit of measurement		Total in AOI
Estimated population		Inhabitants	No.	~ 11 000
	Built-up	Residential Buildings	No.	3 991
		Wholesale and retail trade buildings	No.	6
		Industrial buildings	No.	1
		Industrial buildings and warehouses	No.	4
		Hotel buildings	No.	15
	Transportation	Primary Road	km	15.3
		Local Road	km	52.5
		Cart Track	km	3.2
	Facilities	Constructions for mining or extraction	ha	2.8
		Long-distance pipelines, communication and electricity lines	km	0.8
		Local pipelines and cables	km	0.2
	Land use	Forests	ha	2 032.2
		Shrub and/or herbaceous vegetation association	ha	13.8
		Inland wetlands	ha	26.5
		Other	ha	672.3

Disclaimer:

Full disclaimer and other helpful information available in the online manual:

<https://mapping.emergency.copernicus.eu/about/rapid-mapping-manual/>

© European Union / Copernicus Emergency Management Service

Access to the portal



Data Access:

All data displayed on the map(s), as well as Land Use - Land Cover layer(s), are available in the Crisis Information Package and the Base Layer Package (for reference data).

The table above is available in editable format in the Crisis Information Package.

All products and data are also available for download on the portal.

Estimated Population:

Estimated population is based on Copernicus Global Human Settlement Layer (GHSL) dataset.

Additional population datasets and analysis are available in the summary table.

Data Sources:

Base Vector Layers: OpenStreetMap © OpenStreetMap contributors (2025); Wikimapia.org; GeoNames 2015;

Global Administrative Areas (2022), refined by the producer, Globe Land 30 (2010), Copernicus Global Land Service: Land Cover (2019).

Inset Maps: Natural Earth 2023; HydroLAKES 2016 by HydroSHEDS;

© EuroGeographics, © TurkStat. Source: European Commission – Eurostat/GISCO, 2021.

Digital Elevation Model:

FABDEM (ForestAndBuildingsremovedCopernicusDEM) removes building and tree height biases from the Copernicus GLO 30

Digital Elevation Model (DEM) (Airbus, 2020).



PROGRAMME OF THE
EUROPEAN UNION

