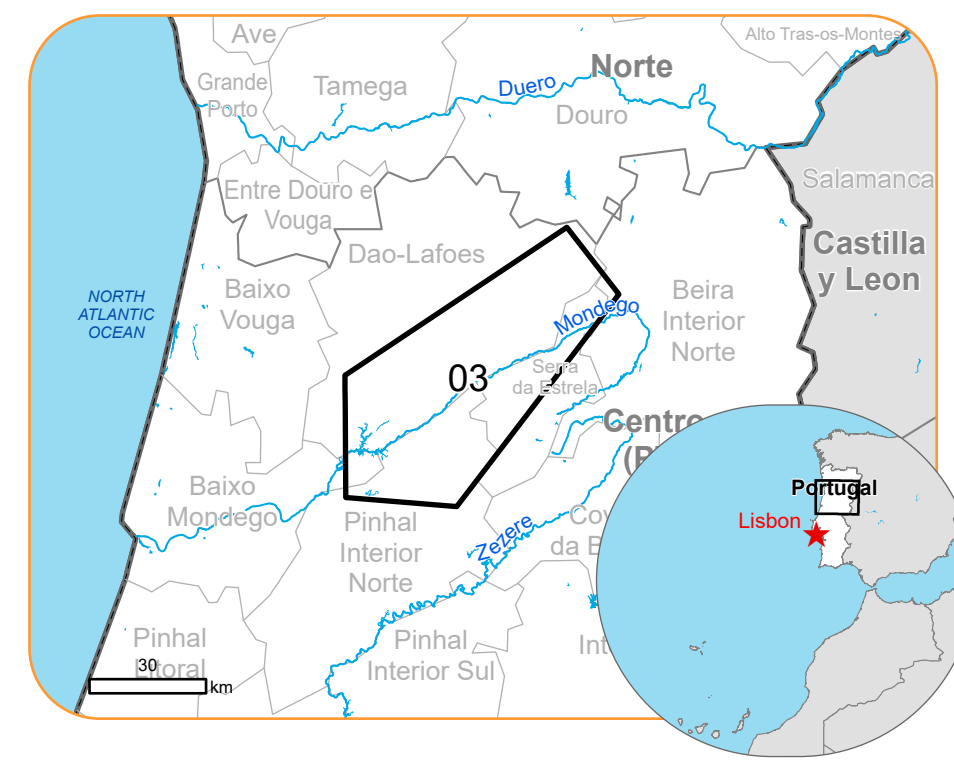




EMSR760 - AOI03
Wildfire in Portugal
REGIAO CENTRO

Situation as of 19/09/2024 11:21 UTC
Delineation - Overview map 01





Burnt area
18,065.2 ha



Potentially affected
population
~ 1200

Potentially Affected Built-up and Transportations



Built-Up
83.3 ha



Road
665.9 km



Railway
0.2 km

Crisis Information

- Burnt area

General Information

- Area of Interest
- Not Analysed

Administrative Boundaries

- Province
- Municipality

Placenames

- Placename

Built-Up Area

- Residential
- Non residential
- School, university and research buildings
- Hospital or institutional care buildings
- Military

Hydrography

- Lake, River

Facilities



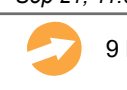
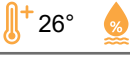


- Long-distance pipelines or lines
- Local pipelines or lines
- Dam
- Mining or extraction site
- Water Well
- Power plant
- Sport and recreation constructions
- Dump Site
- Water or Aquatic infrastructure
- Dam

Transportation

- Highway
- Main road
- Railway
- Tramway
- Airfield runway
- Navigable canal

Transportation

- Airfield

	Current		Forecast			
	Sep 19, 11:01 UTC		Sep 20, 11:01 UTC		Sep 21, 11:01 UTC	
Wind direction and speed		14 km/h		10 km/h		9 km/h
Temperature and relative humidity		26° 46%		22° 61%		20° 77%

Data retrieved from ECMWF on Sep 19, 11:01 UTC. Calculated at: 40.563°N, -7.741°E.

Data retrieved from ECMWF on Sep 19, 11:01 UTC. Calculated at: 40.563°N, -7.741°E.

Event On the 15 September 2024, a wildfire started in the municipalities of Oliveira de Azemeis, Sever do Vouga and Albergaria-a-Velha, in Aveiro region. The fire expanded rapidly due to the high temperature and strong winds. Since the 18 September 2024, additional areas are impacted by wildfires as well. In the fire combat are actually present 5 300 operationals, 1 6250 vehicles and 26 airplanes and helicopters. Fires are still very active. Copernicus EMS Rapid Mapping is requested to provide fire extent.

Data sources and analysis: Pre-event image: Sentinel-2A/B (2024) (acquired on 02/06/2024 at 11:21 UTC, resolution 10.0 m).

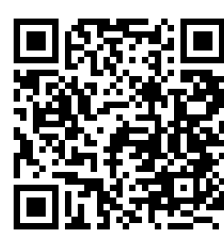
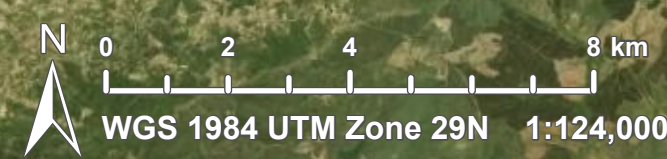
Post-event image: GeoEye © Maxar Technologies, Inc. (2024), (acquired on 19/09/2024 at 11:21 UTC, resolution 2.0 m).

All images are provided under COPERNICUS by the European Union and ESA, all rights reserved.

The thematic layer has been derived from post-event satellite image by means of visual interpretation. Due to clouds coverage, the burnt area delineation is not complete.

Map produced by GMV released by SERTIT on the 20/09/2024.

Details on this activation and service conditions available through the QR code or at the link: <https://rapidmapping.emergency.copernicus.eu/EMSR760>



Consequences within the AOI				
	Unit of measurement	Affected	Total in AOI	
Burnt area	ha		18,065.2	
Estimated population	Number of inhabitants	~ 1,200	~ 220,000	
Built-up	Residential Buildings	ha	70.3	8,540.5
	Office buildings	ha	0	57.0
	Wholesale and retail trade buildings	ha	0	15.5
	Industrial buildings	ha	13.0	672.0
	School, university and research buildings	ha	0	81.4
	Hospital or institutional care buildings	ha	0	5.7
	Military	ha	0	5.3
	Cemetery	ha	0	15.7
Transportation	Airfield runways	ha	0	25.0
	Helipad	ha	0	1.7
	Airfield runways	km	0	2.8
	Navigable canals	km	0	0.04
	Highways	km	17.1	349.9
	Primary Road	km	10.0	649.4
	Secondary Road	km	8.2	322.9
	Local Road	km	63.1	4,226.6
	Cart Track	km	567.5	7,623.3
	Railway Yard	km	0	1.6
	Tramway	km	0	0.5
Facilities	Long-distance railways	km	0.2	107.5
	Settling Basin	ha	0	31.6
	Dams	ha	0	4.9
	Constructions for mining or extraction	ha	7.6	208.3
	Power plant constructions	ha	0	88.7
	Sport and recreation constructions	ha	3.2	349.5
	Other civil engineering works not elsewhere classified	ha	0	14.4
	Long-distance pipelines, communication and electricity lines	km	13.0	692.1
	Local pipelines and cables	km	2.0	50.0
	Dams	km	0.6	2.6
Land use	Shrub and/or herbaceous vegetation association	ha	10,813.8	79,224.8
	Forests	ha	3,098.6	84,887.5
	Heterogeneous agricultural areas	ha	2,753.6	75,920.8
	Open spaces with little or no vegetation	ha	935.0	5,786.2
	Arable land	ha	181.9	5,514.1
	Permanent crops	ha	155.3	8,438.6
	Other	ha	74.4	9,301.5
	Pastures	ha	52.6	153.5

Disclaimer:

Full disclaimer and other helpful information available in the online manual:
<https://emergency.copernicus.eu/mapping/ems/online-manual-rapid-mapping-products>
© European Union / Copernicus Emergency Management Service

Data Access:

All data displayed on the map(s), as well as the Physiography and Land Use - Land Cover layers, are available in the Crisis Information Package and the Base Layer Package (for reference data). The table above is available in editable format in the Crisis Information Package. All products and data are also available for download on the portal.

Estimated Population:

Estimated population is based on Copernicus Global Human Settlement Layer (GHSL) dataset. Additional population datasets and analysis are available in the summary table.

Data Sources:

Base Vector Layers: OpenStreetMap © OpenStreetMap contributors (2024), Wikimapia.org, GeoNames 2015, Corine Land Cover (CLC) 2018, EuroBoundaryMap 2017 ©EuroGeographics.
Inset Maps: JRC 2013, GISCO 2010 © EuroGeographics, Natural Earth 2012, CCM River DB © EUJRC2007, GeoNames 2015.
Digital Elevation Model: FABDEM (ForestAndBuildingsremovedCopernicusDEM) removes building and tree height biases from the Copernicus GLO 30
© Airbus Defence and Space GmbH (2020) provided under COPERNICUS by the European Union and ESA, all rights reserved.
Digital Elevation Model (DEM) (Airbus,2020).

Access to the portal



PROGRAMME OF THE
EUROPEAN UNION

