

Situation as of 24/07/2025 09:38 UTC
Delineation - Overview map 01



Active Flames 24 No.
Fire Fronts 0.7 km
Burnt area 1,645.5 ha

Potentially affected population
~ Not available

Potentially Affected Built-up and Transportations

Road
9.6 km

Crisis Information

Active Flames

Fire Fronts

Burnt area

General Information

Area of Interest

Not Analysed

Placenames

Placename

Built-Up Area

Residential

Hydrography

Lake, River





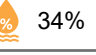

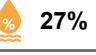


Facilities

Dam

Transportation

Local road

Track

	Current		Forecast	
	Jul 24, 09:38 UTC		Jul 25, 09:38 UTC	Jul 26, 09:38 UTC
Wind direction and speed	 4 km/h		 4 km/h	 7 km/h
Temperature and relative Humidity	 27°  34%		 30°  27%	 32°  19%

Data retrieved from ECMWF on Jul 24, 09:38 UTC. Calculated at: 41.732°N, 20.146°E.

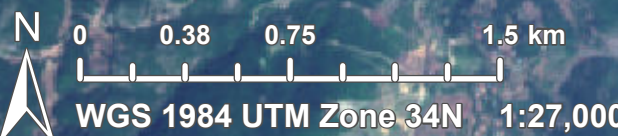
Event: The 23 July 2025, two major wildfires are ongoing in Albania. One is located in the southern part of the country, near the village of Dukat, endangering populated areas. The second one is located in the northern part of the country, near the Lure Natural Park. Copernicus EMS Rapid Mapping is requested to provide wildfire initial rough estimation, wildfire extent monitoring and damage assessment emergency mapping.

Data sources and analysis: Pre-event image: Sentinel-2 (2025) (acquired on 04/07/2025 at 09:38 UTC, resolution 10 m).
Post-event image: Sentinel-2 (2025) (acquired on 24/07/2025 at 09:38 UTC resolution 10 m).
This image is used as background image.
All images are provided under COPERNICUS by the European Union and ESA, all rights reserved.

The thematic layer has been derived from post-event satellite image by means of visual interpretation. Due to dense smoke, the burnt area delineation is not complete.

Map produced by GAF AG released by SERTIT on the 24/07/2025.

Details on this activation and service conditions available through the QR code or at the link: <https://mapping.emergency.copernicus.eu/activations/EMSR816>



Consequences within the AOI				
		Unit of measurement	Affected	Total in AOI
Burnt area		ha		1,645.5
Fire Fronts		km		0.7
Active Flames		No.		24
Estimated population		Number of inhabitants	NA	~ 300
Built-up	Residential Buildings	ha	0	16.4
Transportation	Local Road	km	0	3.3
	Cart Track	km	9.6	115.3
Facilities	Dams	ha	0	0.01
Land use	Shrub and/or herbaceous vegetation association	ha	1,046.1	7,519.3
	Forests	ha	596.9	4,860.9
	Open spaces with little or no vegetation	ha	2.4	1,521.0
	Heterogeneous agricultural areas	ha	0	283.8

Disclaimer:

Full disclaimer and other helpful information available in the online manual:

<https://mapping.emergency.copernicus.eu/about/rapid-mapping-manual/>

© European Union / Copernicus Emergency Management Service

Data Access:

All data displayed on the map(s), as well as Land Use - Land Cover layer(s), are available in the Crisis Information Package and the Base Layer Package (for reference data). The table above is available in editable format in the Crisis Information Package. All products and data are also available for download on the portal.

Access to the portal

**Estimated Population:**

Estimated population is based on Copernicus Global Human Settlement Layer (GHSL) dataset. Additional population datasets and analysis are available in the summary table.

Data Sources:

Base Vector Layers: OpenStreetMap © OpenStreetMap contributors (2025); Wikimapia.org; GeoNames 2015; Corine Land Cover (CLC) 2018; © EuroGeographics, © TurkStat. Source: European Commission – Eurostat/GISCO, 2021.

Inset Maps: Natural Earth 2023; HydroLAKES 2016 by HydroSHEDS; © EuroGeographics, © TurkStat. Source: European Commission – Eurostat/GISCO, 2021.

Digital Elevation Model:

COP-DEM-EEA-10-R product © DLR e.V. (2014-2018) and

© Airbus Defence and Space GmbH (2020) provided under COPERNICUS by the European Union and ESA, all rights reserved.



PROGRAMME OF THE
EUROPEAN UNION

