

**Situation as of 21/07/2025 09:30 UTC**  
First Estimate Product - Overview map 01



 **Active Flames 4 No.**  
**Fire Fronts 2.8 km**  
**Burnt area 1,055.5 ha**

**Crisis Information**

 Active Flames

 Fire Fronts

 Burnt area


 Area of Interest


**Placenames**

 Placename

**Transportation**

 Main road

 Local road

 Track

**Event:** The 23 July 2025, two major wildfires are ongoing in Albania. One is located in the southern part of the country, near the village of Dukat, endangering populated areas. The second one is located in the northern part of the country, near the Lure Natural Park. Copernicus EMS Rapid Mapping is requested to provide wildfire initial rough estimation, wildfire extent monitoring and damage assessment emergency mapping.

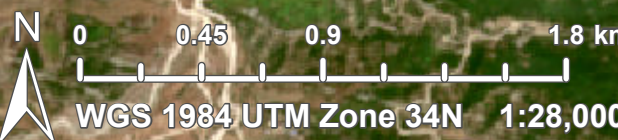
**Data sources and analysis:** Post-event image: Sentinel-2 (2025) (acquired on 21/07/2025 at 09:30 UTC, resolution 10.0 m). This image is used as background image. All images are provided under COPERNICUS by the European Union and ESA, all rights reserved.

Base vector layers: OpenStreetMap © OpenStreetMap contributors (2025); Wikimapia.org; GeoNames 2015; Corine Land Cover (CLC) 2018; ©EuroGeographics, ©TurkStat. Source: European Commission – Eurostat/ GISCO, 2021.

Inset maps: Natural Earth 2023; HydroLAKES 2016 by HydroSHEDS; © EuroGeographics, © TurkStat. Source: European Commission – Eurostat/ GISCO, 2021.

The thematic layer has been derived from post-event satellite image using a semi-automatic approach.

**Disclaimer:** Full disclaimer and other helpful information available in the online manual: <https://mapping.emergency.copernicus.eu/about/rapid-mapping-manual/>.



Map produced by IABG released by SERTIT on the 23/07/2025.

Details on this activation and service conditions available through the QR code or at the link: <https://mapping.emergency.copernicus.eu/activations/EMSR816>

