



EMSR836 - AOI04

Wildfire in Montenegro

DANILOVGRAD NORTH

Situation as of 17/08/2025 09:45 UTC  
Delineation MONIT01 - Overview map 01



 Burnt area  
398.5 ha

 Potentially affected population  
~ Not available

Potentially Affected Built-up and Transportations

 Built-Up  
0.4 ha

 Road  
3.2 km

**Crisis Information**

- Burnt area

**General Information**

- Area of Interest
- Not Analysed

**Built-Up Area**

- Residential
- Non residential




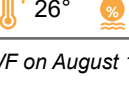
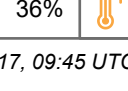
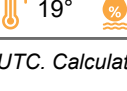
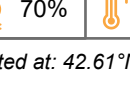
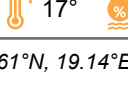
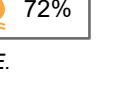
**Facilities**

- Long-distance pipelines or lines

**Transportation**

- Main road
- Local road
- Track
- Railway

**Event:** From 10 August, wildfires have affected various parts of Montenegro. The event is on-going now mostly around Podgorica, the capital. Copernicus EMS Rapid Mapping is requested to provide initial rough estimation, wildfire extent and damage assessment emergency mapping.

	Current		Forecast	
	17 August 09:45 UTC	18 August 09:45 UTC	18 August 09:45 UTC	19 August 09:45 UTC
Wind direction and speed	 5 km/h	 6 km/h	 4 km/h	
Temperature and relative Humidity	 26°  36%	 19°  70%	 17°  72%	

Data retrieved from ECMWF on August 17, 09:45 UTC. Calculated at: 42.61°N, 19.14°E.

**Data sources and analysis:**  
Pre-event image: ESRI World Imagery © DigitalGlobe (acquired on 21/10/2024, resolution 0.9 m).  
Post-event image: Pléiades-1B © CNES (2025), distributed by Airbus DS (acquired on 17/08/2025 at 09:45 UTC, resolution 2.0 m). This image is used as background image.

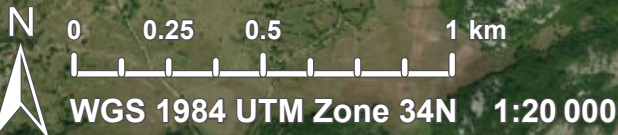
All images are provided under COPERNICUS by the European Union and ESA, all rights reserved.

The thematic layer has been derived from post-event satellite image using a semi-automatic approach. Due to cloud coverage, the burnt area delineation is not complete.

The current burnt area cumulates all burnt area extents from previous post-event products.

Map produced by SERTIT released by SERTIT on the 17/08/2025.

Details on this activation and service conditions available through the QR code or at the link: <https://mapping.emergency.copernicus.eu/activations/EMSR836>





Consequences within the AOI				
		Unit of measurement	Affected	Total in AOI
Burnt area		ha		398.5
Estimated population	Number of inhabitants		NA	~ 40
Built-up	Residential Buildings	ha	0.4	26.8
	Cemetery	ha	0	0.3
Transportation	Secondary Road	km	0	0.2
	Local Road	km	0.1	31.7
	Cart Track	km	3.2	75.3
	Long-distance railways	km	0	2.7
Facilities	Long-distance pipelines, communication and electricity lines	km	0	10.1
Land use	Shrub and/or herbaceous vegetation association	ha	238.6	3 346.0
	Forests	ha	158.6	4 098.7
	Heterogeneous agricultural areas	ha	1.3	976.1
	Pastures	ha	0	58.0
	Open spaces with little or no vegetation	ha	0	1 090.8

**Disclaimer:**

Full disclaimer and other helpful information available in the online manual:

<https://mapping.emergency.copernicus.eu/about/rapid-mapping-manual/>

© European Union / Copernicus Emergency Management Service

**Data Access:**

All data displayed on the map(s), as well as Land Use - Land Cover layer(s), are available in the Crisis Information Package and the Base Layer Package (for reference data).

The table above is available in editable format in the Crisis Information Package.

All products and data are also available for download on the portal.

Access to the portal

**Estimated Population:**

Estimated population is based on Copernicus Global Human Settlement Layer (GHSL) dataset.

Additional population datasets and analysis are available in the summary table.

**Data Sources:**

Base Vector Layers: OpenStreetMap © OpenStreetMap contributors (2025); Wikimapia.org; GeoNames 2015;

Corine Land Cover (CLC) 2018; © EuroGeographics, © TurkStat. Source: European Commission – Eurostat/GISCO, 2021.

Inset Maps: Natural Earth 2023; HydroLAKES 2016 by HydroSHEDS;

© EuroGeographics, © TurkStat. Source: European Commission – Eurostat/GISCO, 2021.

Digital Elevation Model:

FABDEM (ForestAndBuildingsremovedCopernicusDEM) removes building and tree height biases from the Copernicus GLO 30

Digital Elevation Model (DEM) (Airbus, 2020).



PROGRAMME OF THE  
EUROPEAN UNION

