



EMSR836 - AOI04

Wildfire in Montenegro

DANILOVGRAD NORTH

Situation as of 16/08/2025 09:49 UTC

Delineation - Overview map 01





Burnt area 146.5 ha



Potentially affected population  
~ Not available

Potentially Affected Built-up and Transportations



Road  
1.2 km

**Crisis Information**

- Burnt area
- Area of Interest
- Image Footprint
- Not Analysed

**Placenames**

- Placename

**Built-Up Area**

- Residential


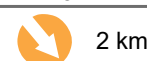
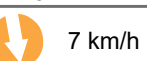




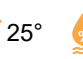

- Non residential

**Facilities**

- Long-distance pipelines or lines

**Transportation**

- Main road
- Local road
- Track
- Railway

	Current		Forecast			
	16 Aug 14:00 UTC		17 Aug 14:00 UTC	18 Aug 14:00 UTC		
Wind direction and speed		11 km/h		2 km/h		7 km/h
Temperature and relative Humidity		29°  26%		22°  61%		25°  60%

Data retrieved from ECMWF on August 16, 14:00 UTC. Calculated at: 42.61°N, 19.14°E.

**Event:** From 10 August, wildfires have affected various parts of Montenegro. The event is on-going now mostly around Podgorica, the capital. Copernicus EMS Rapid Mapping is requested to provide initial rough estimation, wildfire extent and damage assessment emergency mapping.

**Data sources and analysis:** Pre-event image: ESRI World Imagery © DigitalGlobe (acquired on 21/10/2024, resolution 0.9 m).

Post-event image: Legion © Maxar Technologies, Inc. (2025), (acquired on 16/08/2025 at 08:49 UTC, resolution 2 m). This image is used as background image.

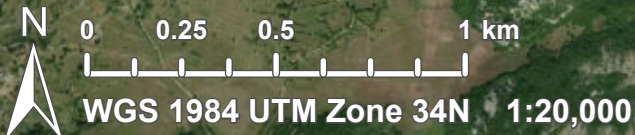
All images are provided under COPERNICUS by the European Union and ESA, all rights reserved.

The thematic layer has been derived from post-event satellite image using a semi-automatic approach. Due to cloud coverage, the burnt area delineation may not be complete.

The current burnt area cumulates all burnt area extents from previous post-event products.

Map produced by GMV released by SERTIT on the 20/08/2025.

Details on this activation and service conditions available through the QR code or at the link: <https://mapping.emergency.copernicus.eu/activations/EMSR836>





Consequences within the AOI				
		Unit of measurement	Affected	Total in AOI
Burnt area		ha		146.5
Estimated population		Number of inhabitants	NA	~ 40
Built-up	Residential Buildings	ha	0	26.8
	Cemetery	ha	0	0.3
Transportation	Secondary Road	km	0	0.2
	Local Road	km	0	31.7
	Cart Track	km	1.2	75.3
	Long-distance railways	km	0	2.7
Facilities	Long-distance pipelines, communication and electricity lines	km	0	10.1
Land use	Shrub and/or herbaceous vegetation association	ha	95.0	3,346.0
	Forests	ha	51.2	4,098.7
	Heterogeneous agricultural areas	ha	0.3	976.1
	Pastures	ha	0	58.0
	Open spaces with little or no vegetation	ha	0	1,090.8

**Disclaimer:**

Full disclaimer and other helpful information available in the online manual:

<https://mapping.emergency.copernicus.eu/about/rapid-mapping-manual/>

© European Union / Copernicus Emergency Management Service

**Data Access:**

All data displayed on the map(s), as well as Land Use - Land Cover layer(s), are available in the Crisis Information Package and the Base Layer Package (for reference data). The table above is available in editable format in the Crisis Information Package. All products and data are also available for download on the portal.

Access to the portal



**Estimated Population:**

Estimated population is based on Copernicus Global Human Settlement Layer (GHSL) dataset. Additional population datasets and analysis are available in the summary table.

**Data Sources:**

Base Vector Layers: OpenStreetMap © OpenStreetMap contributors (2025); Wikimapia.org; GeoNames 2015; Corine Land Cover (CLC) 2018; © EuroGeographics, © TurkStat. Source: European Commission – Eurostat/GISCO, 2021.

Inset Maps: Natural Earth 2023; HydroLAKES 2016 by HydroSHEDS; © EuroGeographics, © TurkStat. Source: European Commission – Eurostat/GISCO, 2021.

Digital Elevation Model:

FABDEM (ForestAndBuildingsremovedCopernicusDEM) removes building and tree height biases from the Copernicus GLO 30 Digital Elevation Model (DEM) (Airbus, 2020).



PROGRAMME OF THE  
EUROPEAN UNION

