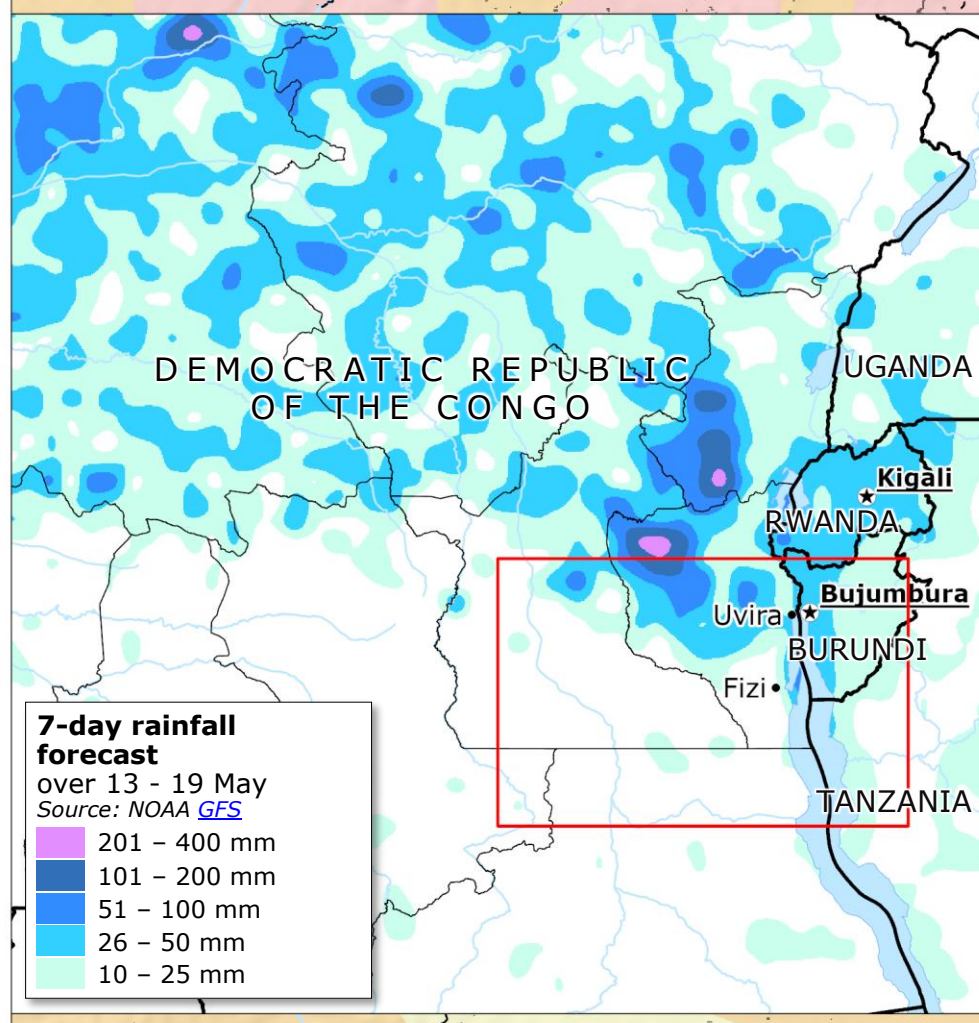
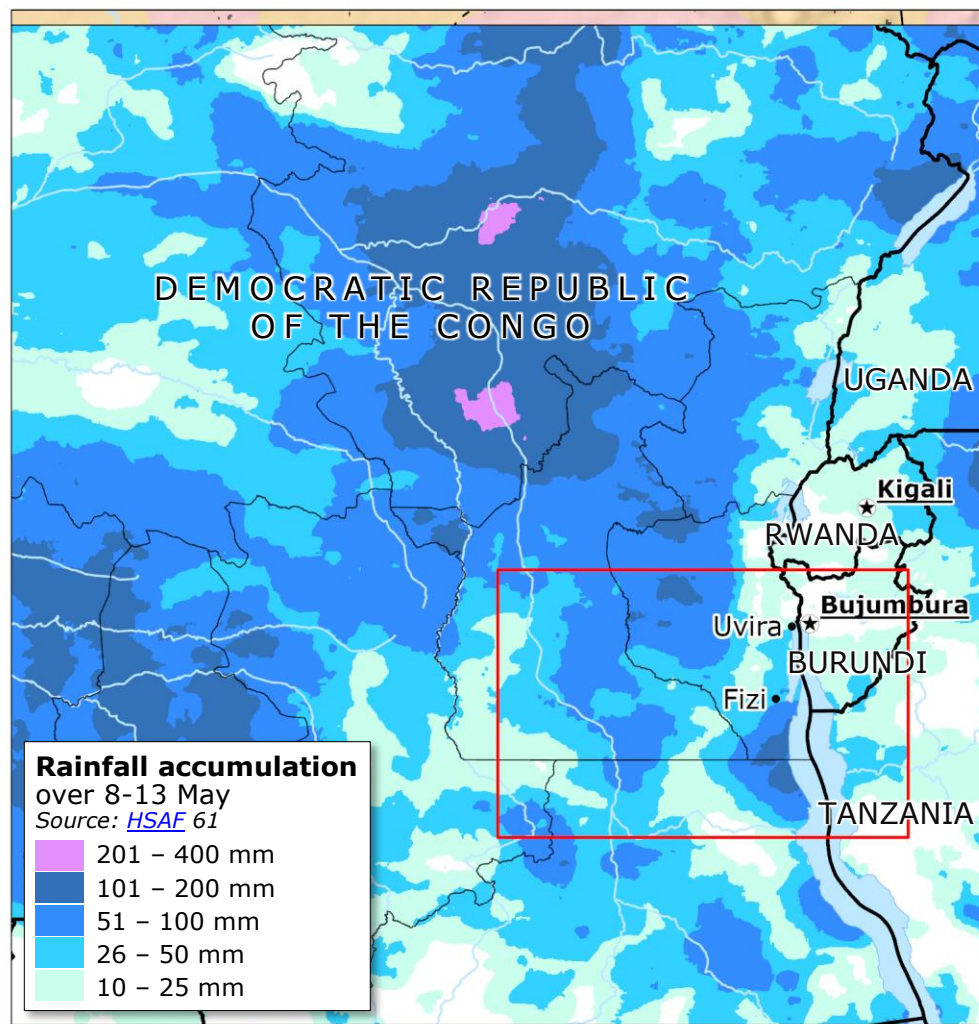


Democratic Republic of the Congo | Recent floods



Impact overview in Kasaba area as of 12 May
Source: [DG ECHO Flash](#)

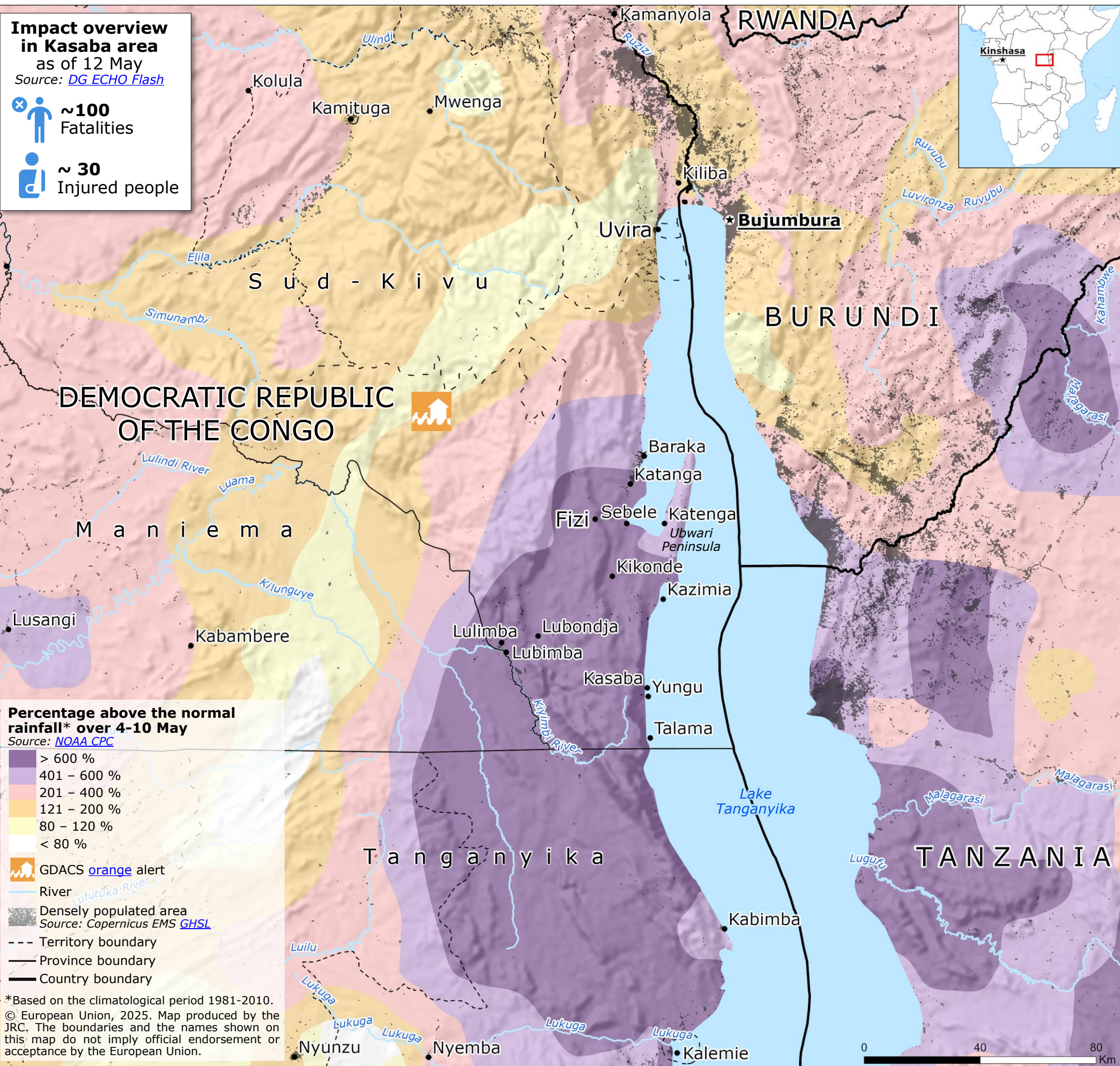
- ~100 Fatalities
- ~30 Injured people

Percentage above the normal rainfall* over 4-10 May
Source: [NOAA CPC](#)

- > 600 %
- 401 – 600 %
- 201 – 400 %
- 121 – 200 %
- 80 – 120 %
- < 80 %

GDACS [orange](#) alert
 River
 Densely populated area
Source: Copernicus EMS [GHSL](#)
 Territory boundary
 Province boundary
 Country boundary

*Based on the climatological period 1981-2010.



© European Union, 2025. Map produced by the JRC. The boundaries and the names shown on this map do not imply official endorsement or acceptance by the European Union.