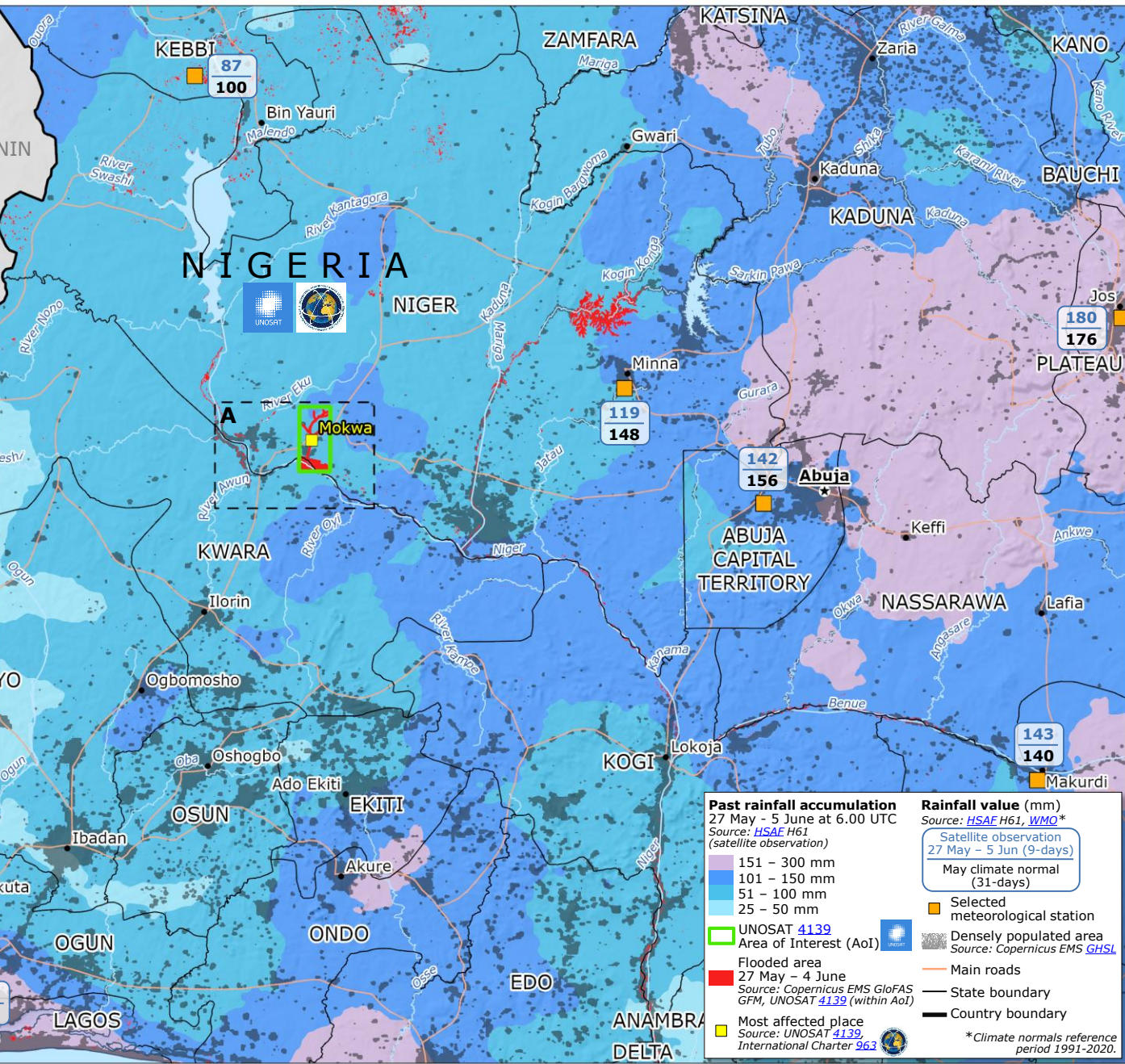
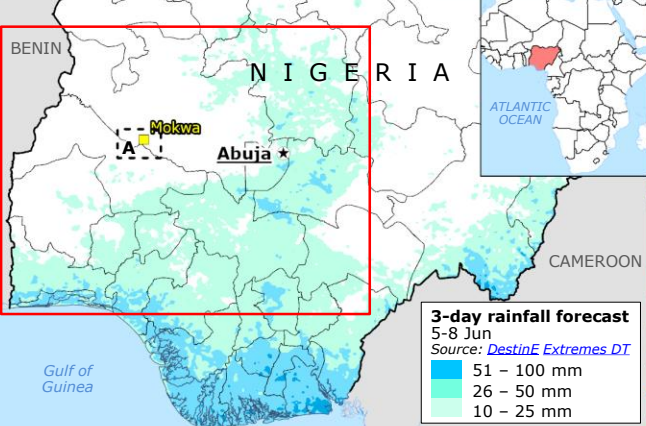
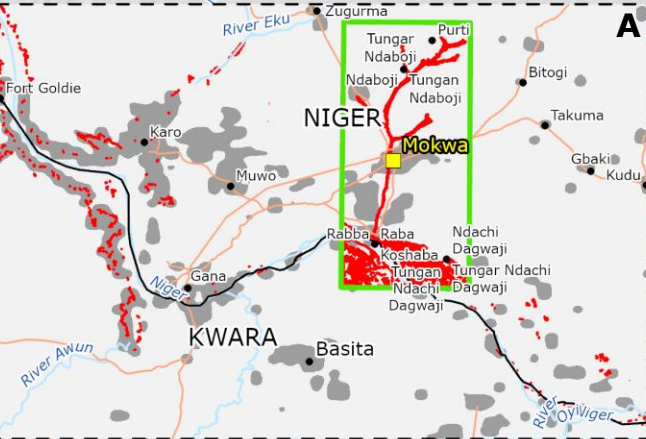


Nigeria | Recent floods

IMPACT OVERVIEW
Mokwa area
Source: IFRC #1, #2 as of 4 June

- 153 Fatalities
- 100 Missing people
- 213 Injured people
- 1 590 Displaced people
- 3 018 Affected people
- 500 Flooded houses

Source: International Charter 963



Past rainfall accumulation
27 May - 5 June at 6.00 UTC
Source: HSAF H61 (satellite observation)

- 151 – 300 mm
- 101 – 150 mm
- 51 – 100 mm
- 25 – 50 mm

Rainfall value (mm)
Source: HSAF H61, WMO*
Satellite observation
27 May – 5 Jun (9-days)
May climate normal (31-days)

- Selected meteorological station
- Densely populated area Source: Copernicus EMS GHSL
- Flooded area
- 27 May – 4 June Source: Copernicus EMS GloFAS GFM, UNOSAT 4139 (within AoI)
- Most affected place Source: UNOSAT 4139, International Charter 963

* Climate normals reference period 1991-2020.

© European Union, 2025. Map produced by the JRC. The boundaries and the names shown on this map do not imply official endorsement or acceptance by the European Union.