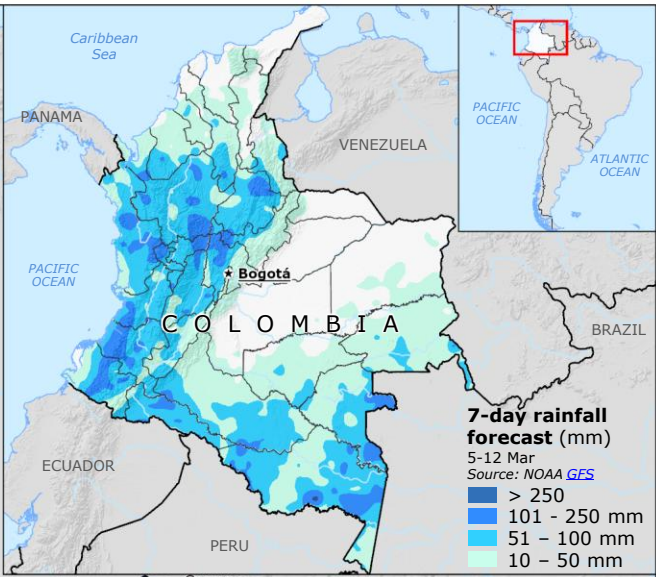
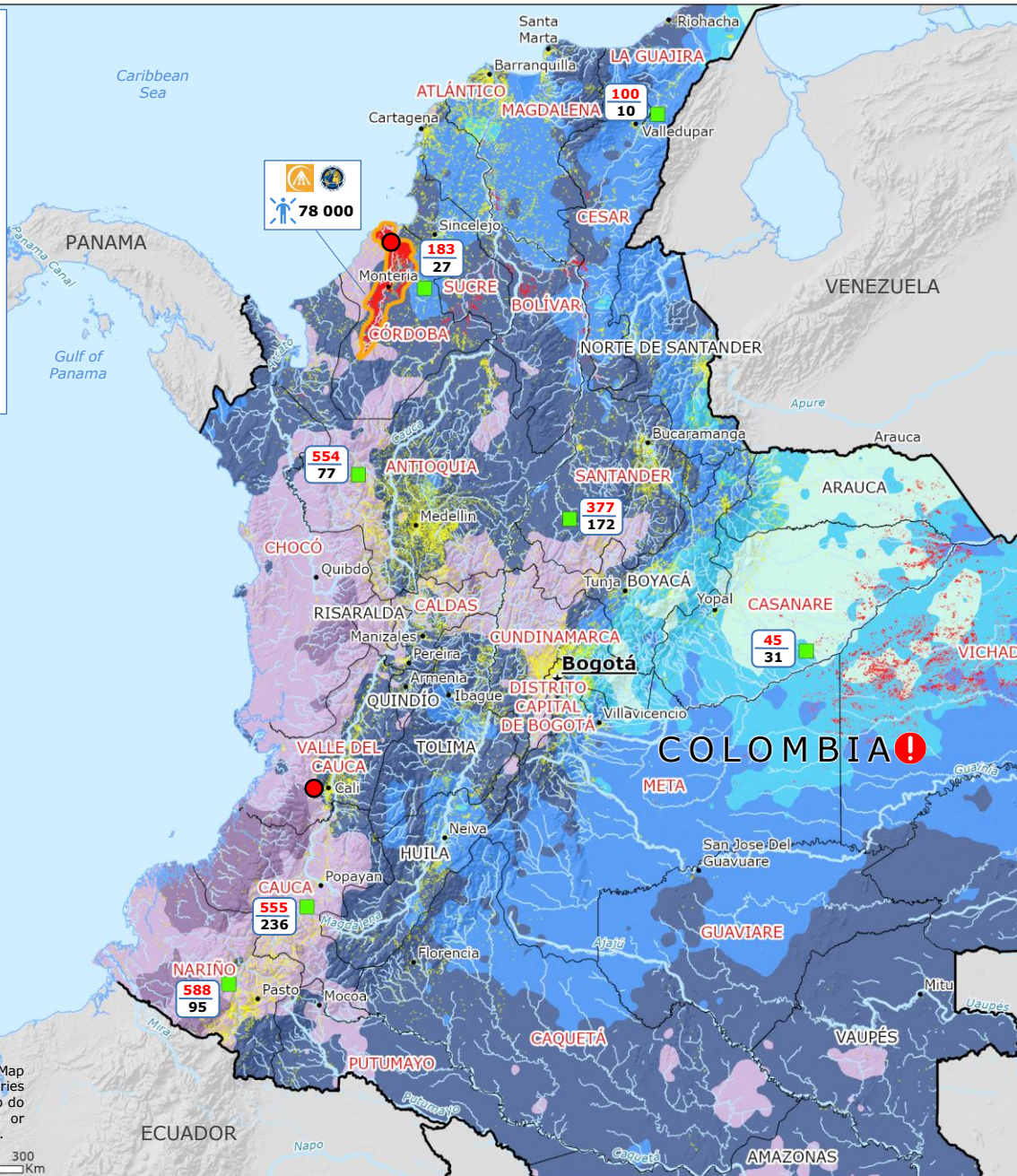


Colombia | Floods update

Impact overview
 since **26 Jan**
 as of **5 Mar**
 Source: [UN OCHA #1, #2, WFP, UNGRD](#)

- 44** Fatalities
- > 580 000** Affected people
- 15 000** Sheltered people
- 87** Shelters
- 4 047** Destroyed houses
- ~23 000** Damaged/flooded houses
- 144** Affected municipalities across **22** departments



Rainfall accumulation
 26 Jan – 4 Mar UTC
 Source: [NASA GPM](#) (satellite observations)

- 1 001 - 1 617 mm
- 501 - 1 000 mm
- 251 - 500 mm
- 101 - 250 mm
- 51 - 100 mm
- 10 - 50 mm

■ Maximum flood extent
 26 Jan – 4 Mar
 Source: [Copernicus EMS GloFAS GPM](#), [Copernicus EMSR 865](#)

! State of public calamity
 Source: [WFP](#)

ADM Affected department
 Source: [UNGRD, WFP](#)

[Copernicus EMSR 865](#)
 Area of Interest (AoI)

International Charter activation **1018**
 Source: [NASA GPM, WMO](#)

Rainfall value (mm)
 Source: [NASA GPM, WMO](#)

- Feb observation 1-28 Feb 2026 ■ Meteorological station
- Feb normal 1991-2020

● Red hydrological alert valid to 5 Mar at 23 UTC Source: [FEWS](#)

■ Densely populated area
 Source: [Copernicus EMS GHSL](#)

— Department boundary
 — Country boundary

© European Union, 2026. Map produced by the JRC. The boundaries and the names shown on this map do not imply official endorsement or acceptance by the European Union.