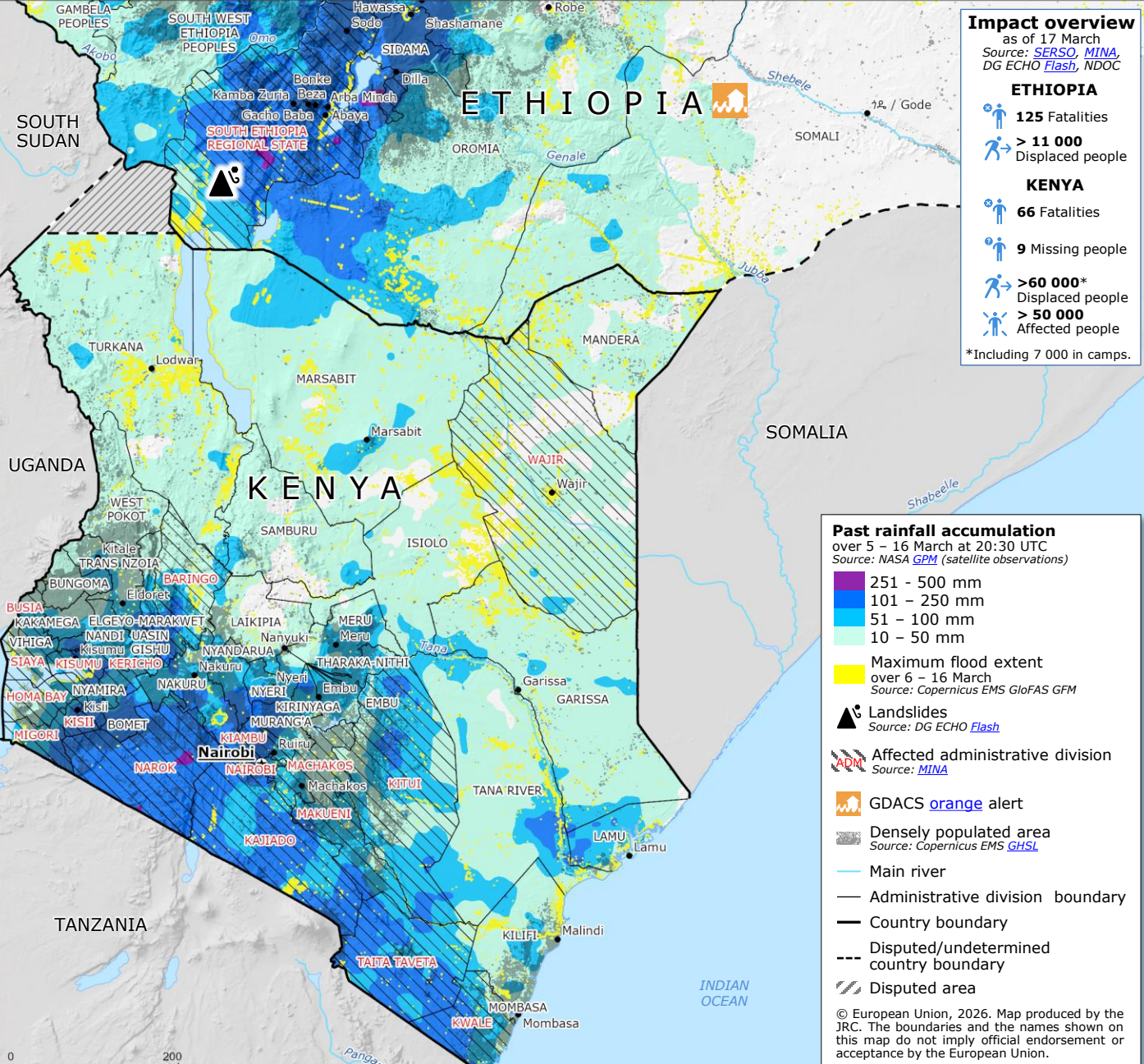
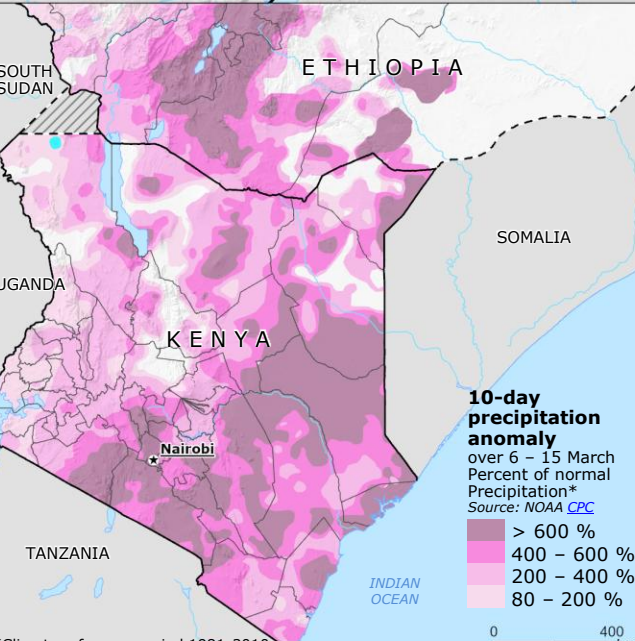
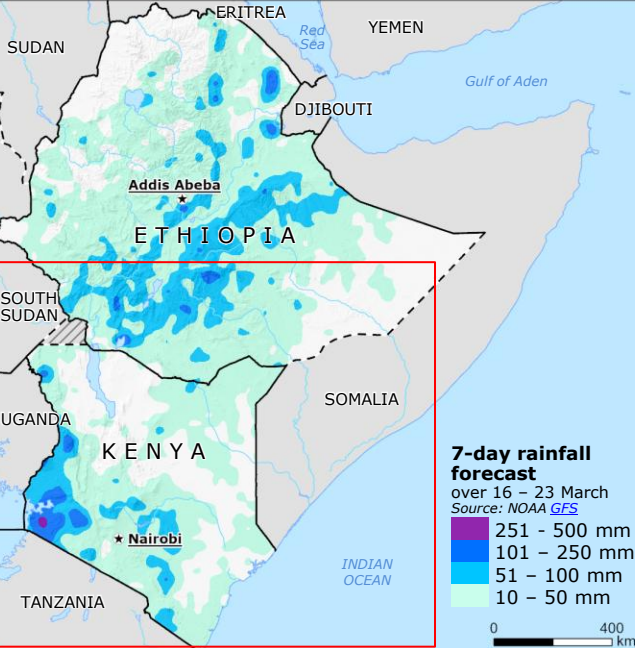


# Ethiopia, Kenya | Floods and landslides



**Impact overview**  
 as of 17 March  
 Source: [SERSO](#), [MINA](#), [DG ECHO Flash](#), [NDOC](#)

**ETHIOPIA**

- 125 Fatalities
- > 11 000 Displaced people

**KENYA**

- 66 Fatalities
- 9 Missing people
- >60 000\* Displaced people
- > 50 000 Affected people

\*Including 7 000 in camps.

**Past rainfall accumulation**  
 over 5 – 16 March at 20:30 UTC  
 Source: NASA GPM (satellite observations)

- 251 - 500 mm
- 101 - 250 mm
- 51 - 100 mm
- 10 - 50 mm

Maximum flood extent over 6 – 16 March  
 Source: Copernicus EMS GloFAS GFM

Landslides  
 Source: DG ECHO Flash

Affected administrative division  
 Source: MINA

GDACS orange alert

Densely populated area  
 Source: Copernicus EMS GHSL

Main river

Administrative division boundary

Country boundary

Disputed/undetermined country boundary

Disputed area

© European Union, 2026. Map produced by the JRC. The boundaries and the names shown on this map do not imply official endorsement or acceptance by the European Union.

\*Climate reference period 1981-2010