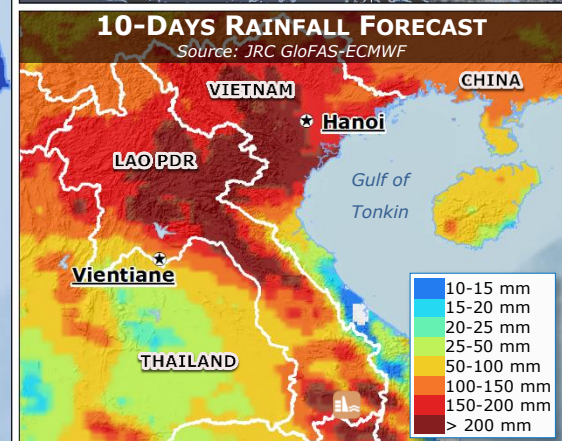
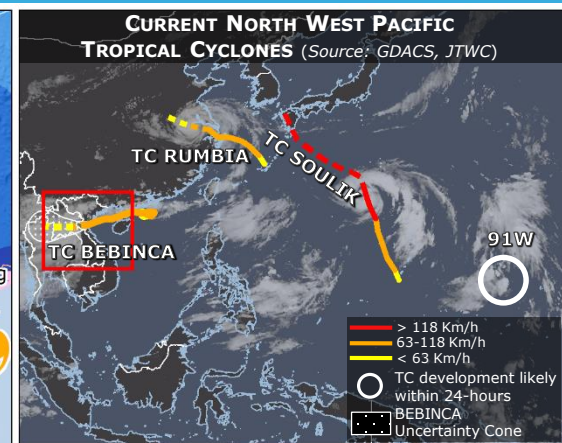
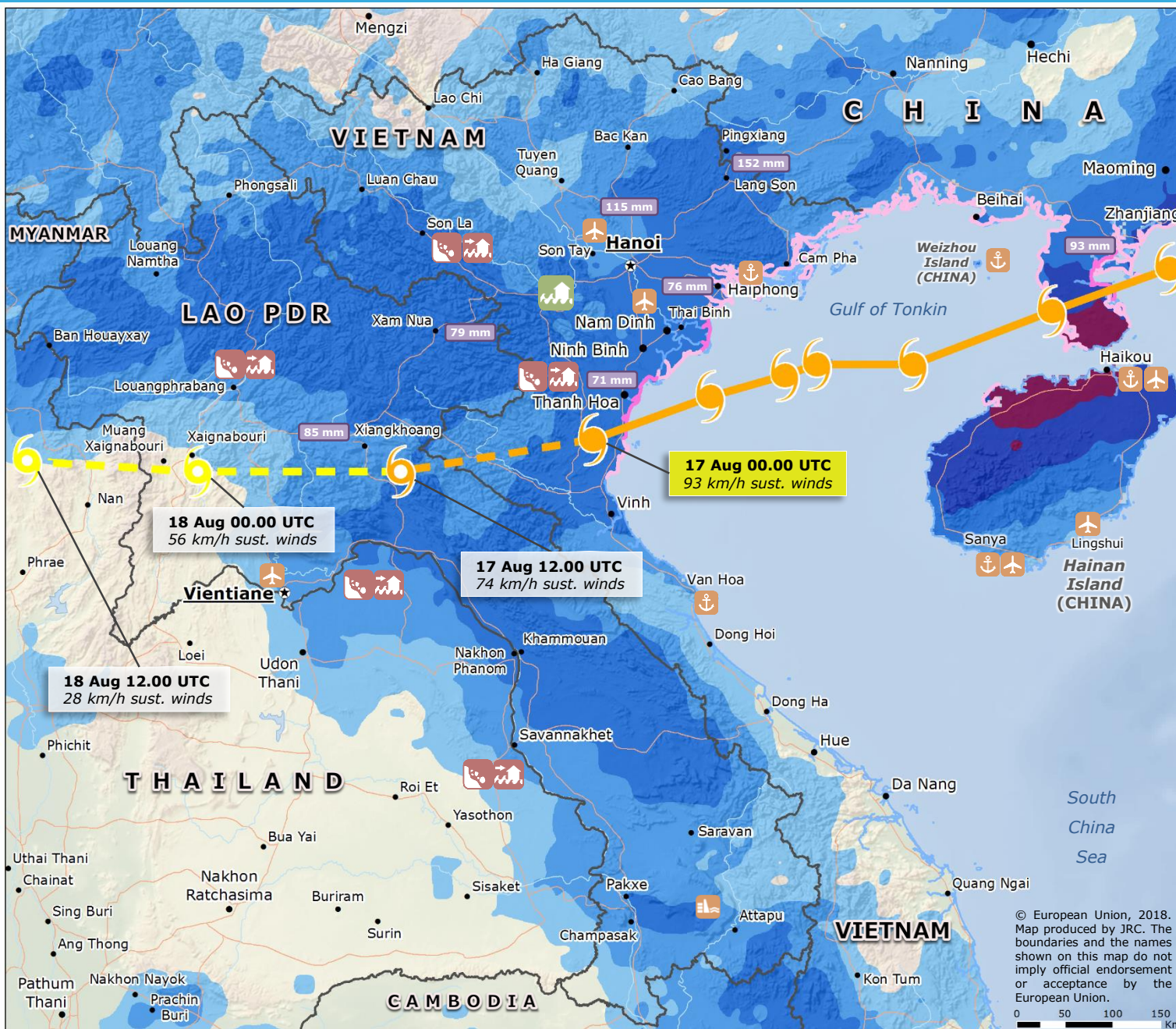


China, Vietnam, Lao PDR, Thailand | Tropical Cyclone BEBINCA



TROPICAL CYCLONE

- Observed position (Black circle)
- Forecast position (Yellow circle)

INTENSITY

- < 63 Km/h (Yellow circle)
- 63 - 118 Km/h (Orange circle)

STORM SURGE
JRC Calculations

- 1 - 1.2 m (Pink line)
- 0.3 - 1 m (Light pink line)

RAINFALL ACCUMULATION PAST 7-DAYS
Source: NASA-GPM

- > 500 mm (Dark purple)
- 250-500 mm (Purple)
- 100-250 mm (Dark blue)
- 50-100 mm (Light blue)
- 25-50 mm (Cyan)

Other symbols:

- Xepian-Xe Nam Noy Dam (collapsed on 23 July) (Dam icon)
- Port (Anchor icon)
- Airport (Plane icon)
- High risk of landslide (Mountain icon)
- High risk of flash flood (House icon)

Source: GDACS, JRC, JTWC, WMO, AHA