

# India, Bangladesh | Tropical Cyclone FANI

**TROPICAL CYCLONE (TC)**

- Observed position
- Forecast position

**INTENSITY**

- < 63 Km/h
- 63-118 Km/h
- > 118 Km/h

**STORM SURGE**  
Source: JRC, NOAA/HWRF

- 0.3 – 1 m
- 1 – 2 m
- 2 – 2.2 m

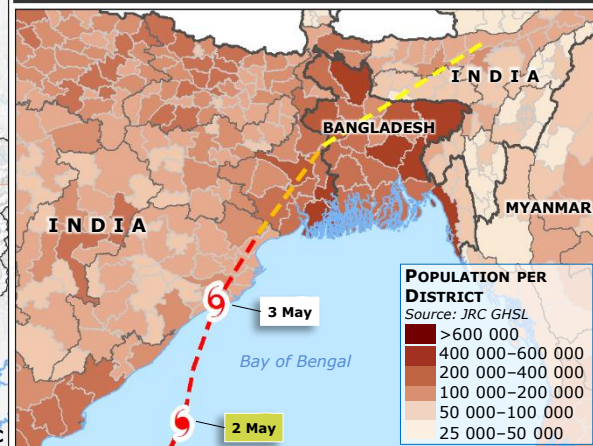
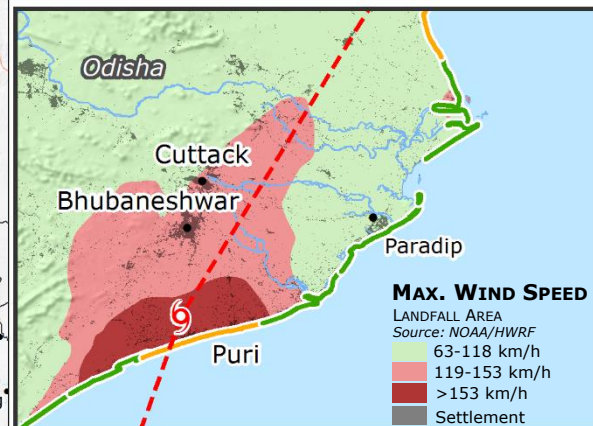
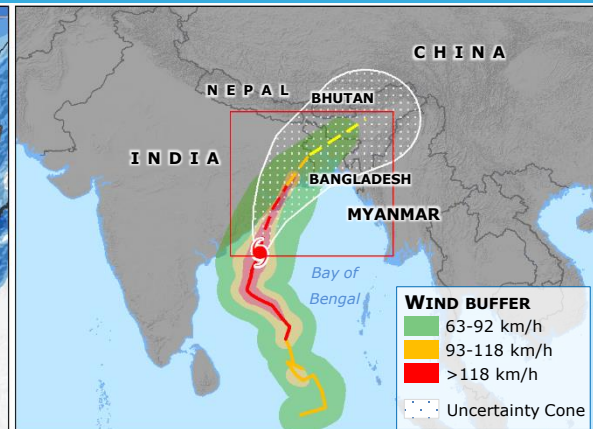
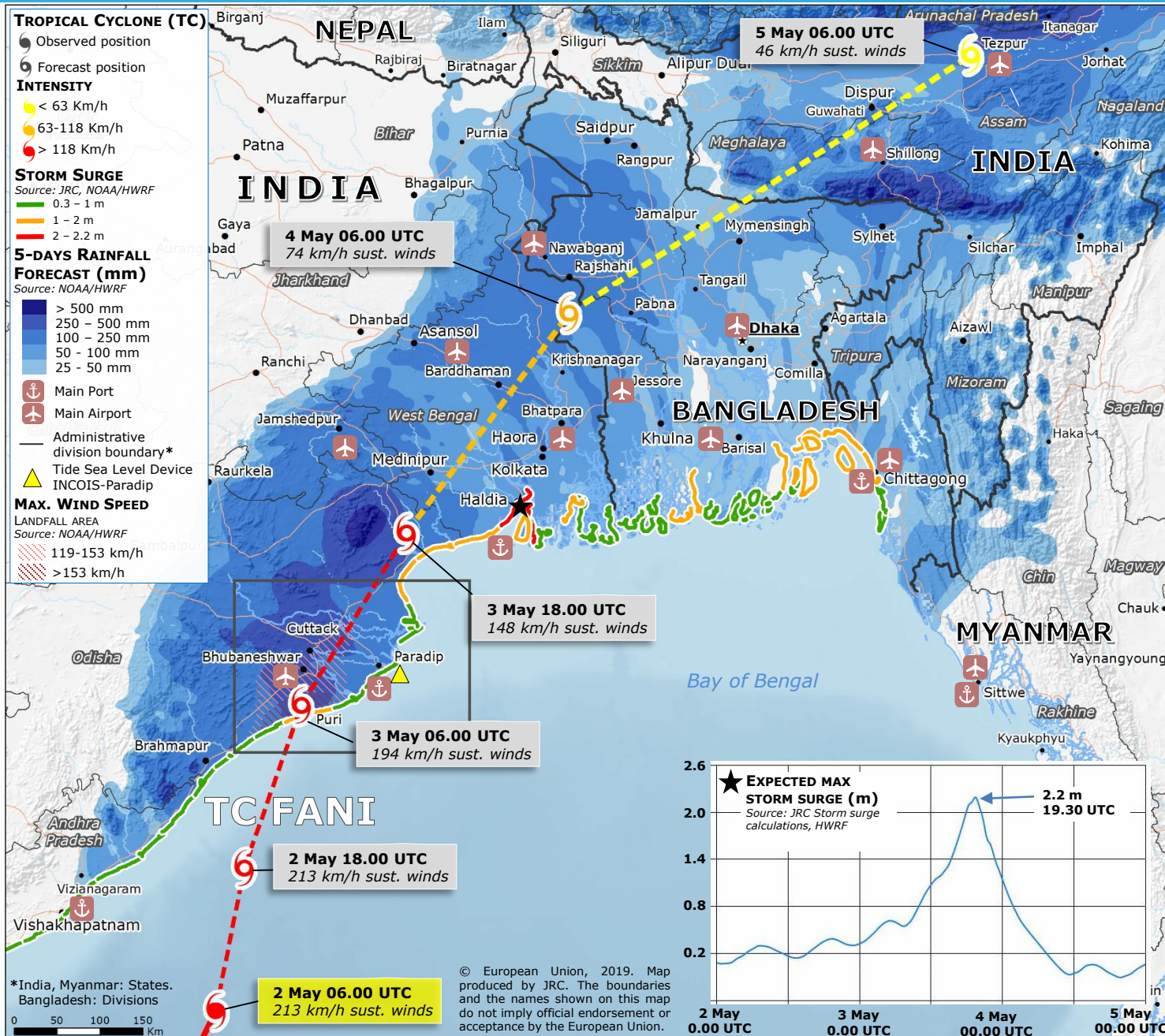
**5-DAYS RAINFALL FORECAST (mm)**  
Source: NOAA/HWRF

- > 500 mm
- 250 – 500 mm
- 100 – 250 mm
- 50 – 100 mm
- 25 – 50 mm

- Main Port
- Main Airport
- Administrative division boundary\*
- Tide Sea Level Device INCOIS-Paradip

**MAX. WIND SPEED**  
LANDFALL AREA  
Source: NOAA/HWRF

- 119-153 km/h
- > 153 km/h



\*India, Myanmar: States. Bangladesh: Divisions

© European Union, 2019. Map produced by JRC. The boundaries and the names shown on this map do not imply official endorsement or acceptance by the European Union.