

India, Pakistan | Tropical Cyclone VAYU

TROPICAL CYCLONE (TC)

- Observed position
- Forecast position

INTENSITY

- < 63 Km/h
- 63-118 Km/h
- > 118 Km/h

WIND BUFFER

- 93-118 km/h
- >118 km/h

STORM SURGE
Source: JRC, GDACS

- 0.3 – 1 m
- 1 – 1.75 m

10-DAYS RAINFALL FORECAST
Source: JRC GloFAS-ECMWF

10-15 mm	50-100 mm
15-20 mm	100-150 mm
20-25 mm	150-200 mm
25-50 mm	>200 mm

GDACS Red Alert

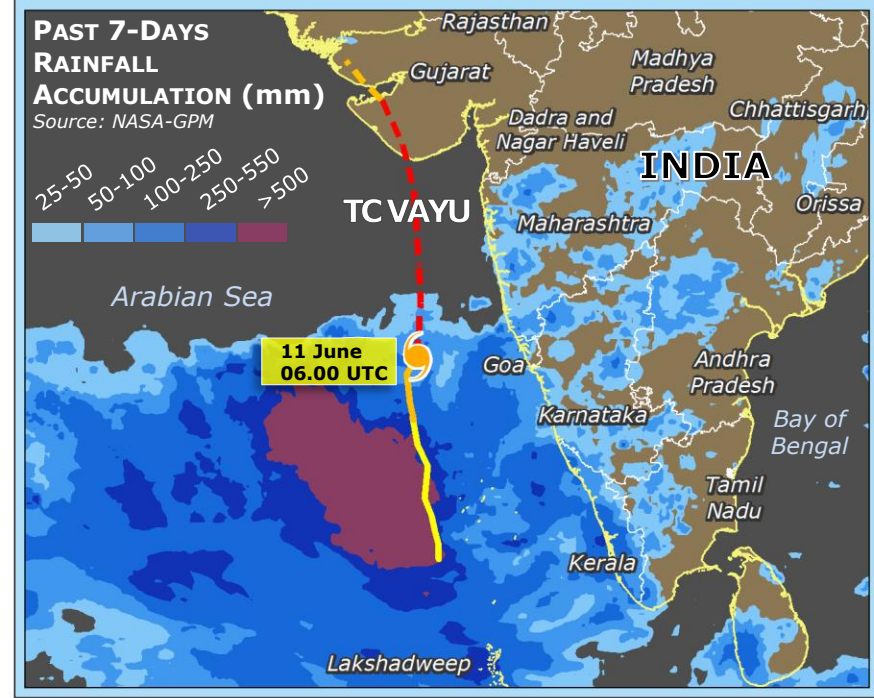
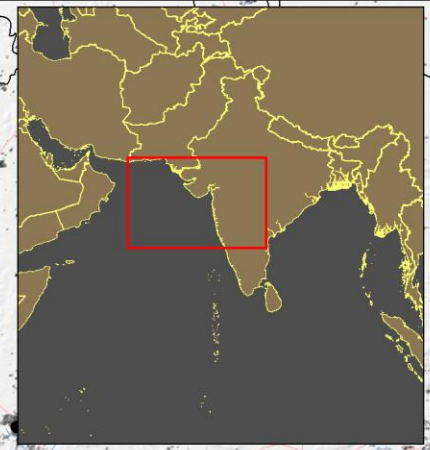
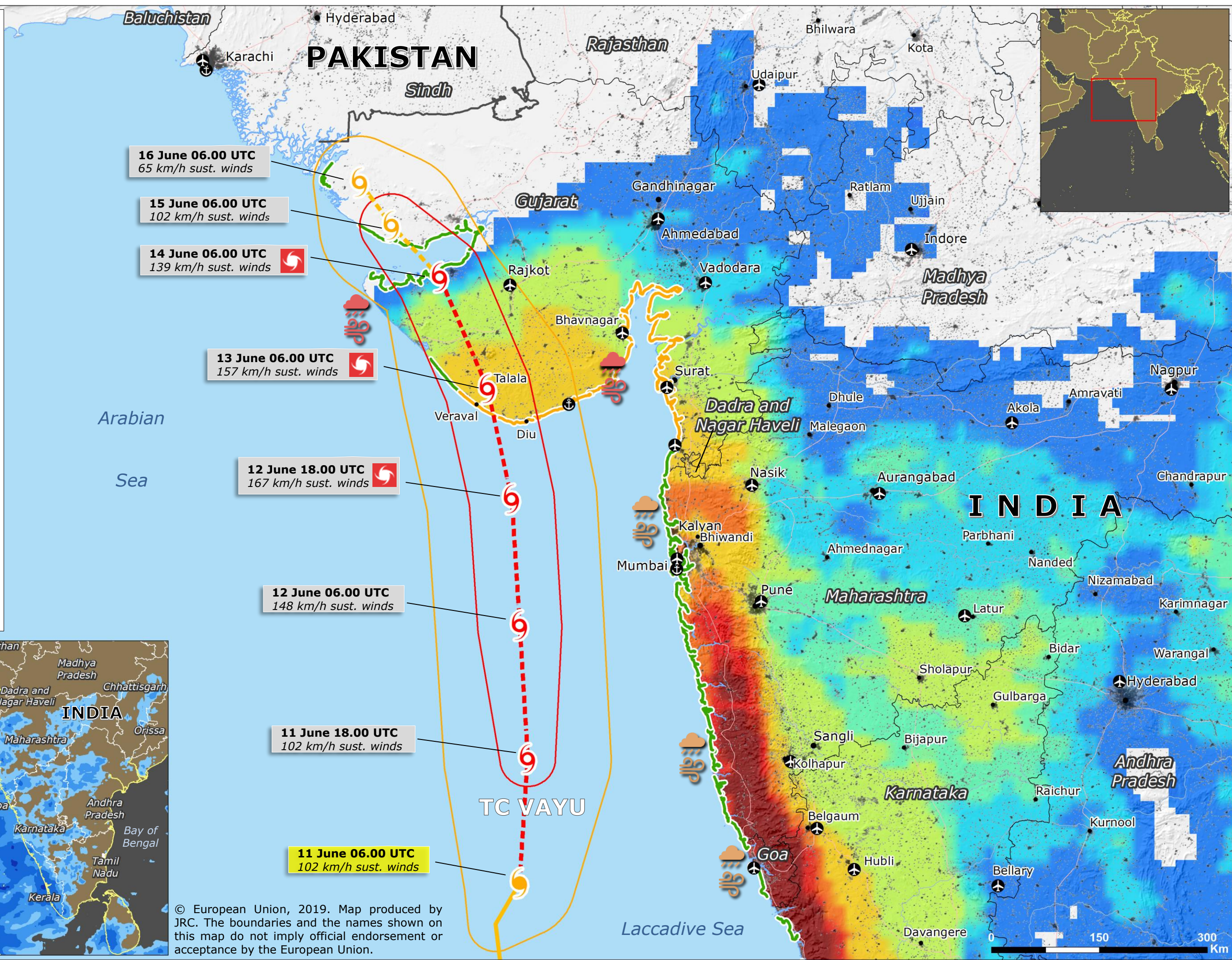
COMMUNITY ADVISORY
Heavy rain and strong winds (for 13 June)
Source: IMD

- Warning (take action)
- Alert (be prepared)

POP DENSITY (People/Km²)
Source: JRC GHSL

500 > 25 000

Main port Main airport



© European Union, 2019. Map produced by JRC. The boundaries and the names shown on this map do not imply official endorsement or acceptance by the European Union.

