

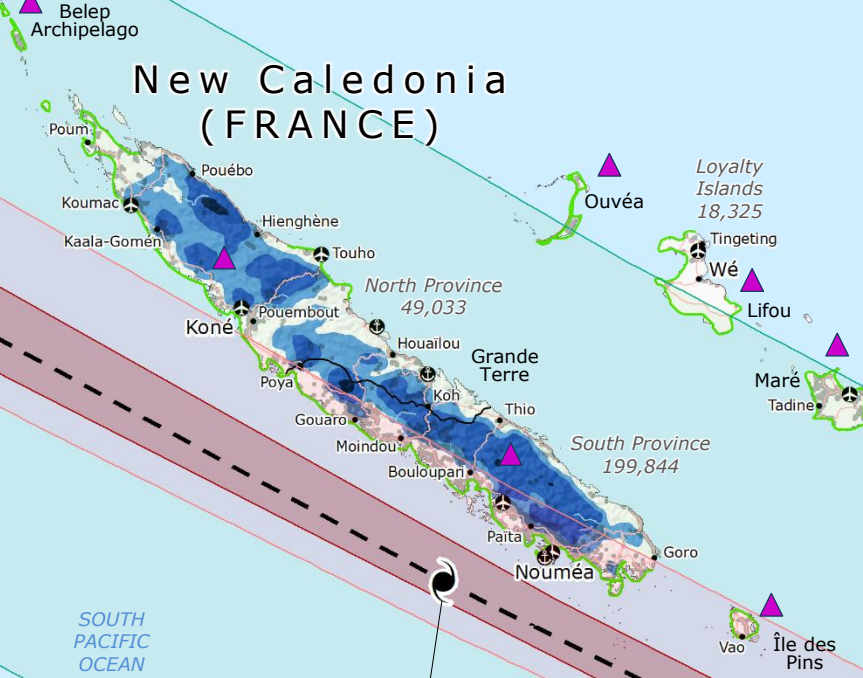
New Caledonia | Tropical Cyclone NIRAN



**Exposed population to winds ≥ 119 km/h*
170,000 people**
*Equivalent to Category 1 or higher (SSHHS)
Source: GDACS

5 Mar 18:00 UTC
222 km/h sust. winds

New Caledonia (FRANCE)



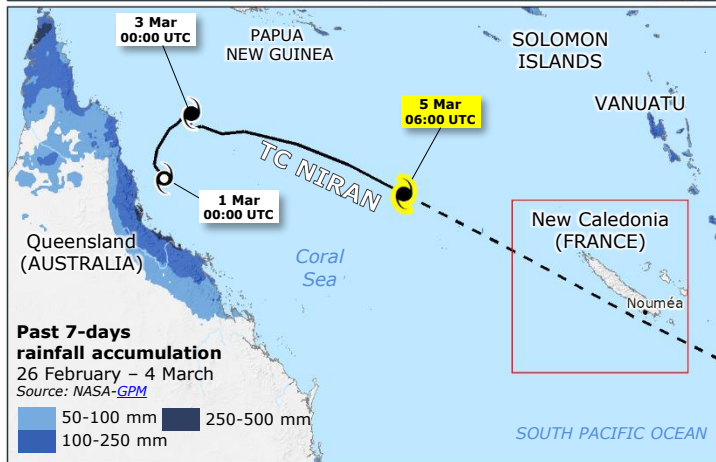
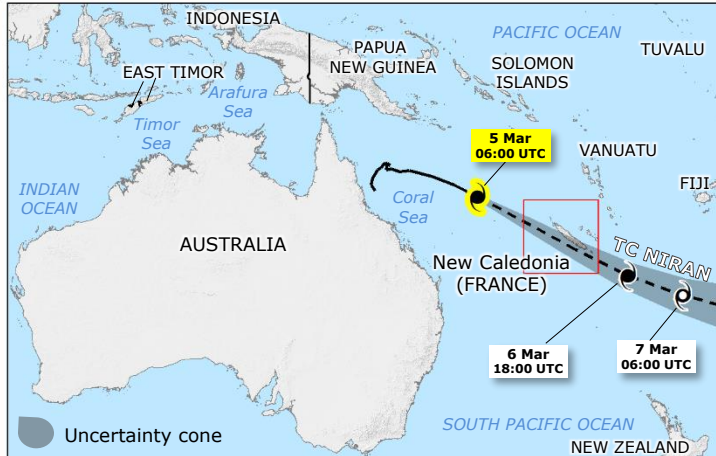
6 Mar 06:00 UTC
204 km/h sust. winds

Community advisory

Source: [DSCGR Nouvelle-Calédonie](#)
Starting 5 March at 21:00 UTC
Level 2 cyclone alert

Evacuation centers opened across **25** localities.

Source: [FranceInfo Nouvelle-Calédonie](#)



Tropical Cyclone (TC)

- Current position
- Past track
- - - Forecast track

Intensity

- ☪ 63-118 km/h
- ☪ 119-222 km/h

Wind buffer

- ≥ 178 km/h
- 119-177 km/h
- 63-118 km/h

Storm surge calculation

5-6 March
Source: JRC, atm. NOAA-HWRF
— < 1 m

GDACS Red Alert

5-day rainfall forecast

5-9 March
Source: NOAA-HWRF

- 50-100 mm
- 100-250 mm
- 250-500 mm

Administrative division

Population
Source: [ISEE-NC](#)

Built-up
Source: [JRC-GHSL](#)

✈ Airport

⚓ Port

© European Union, 2021. Map produced by the JRC. The boundaries and the names shown on this map do not imply official endorsement or acceptance by the European Union.

