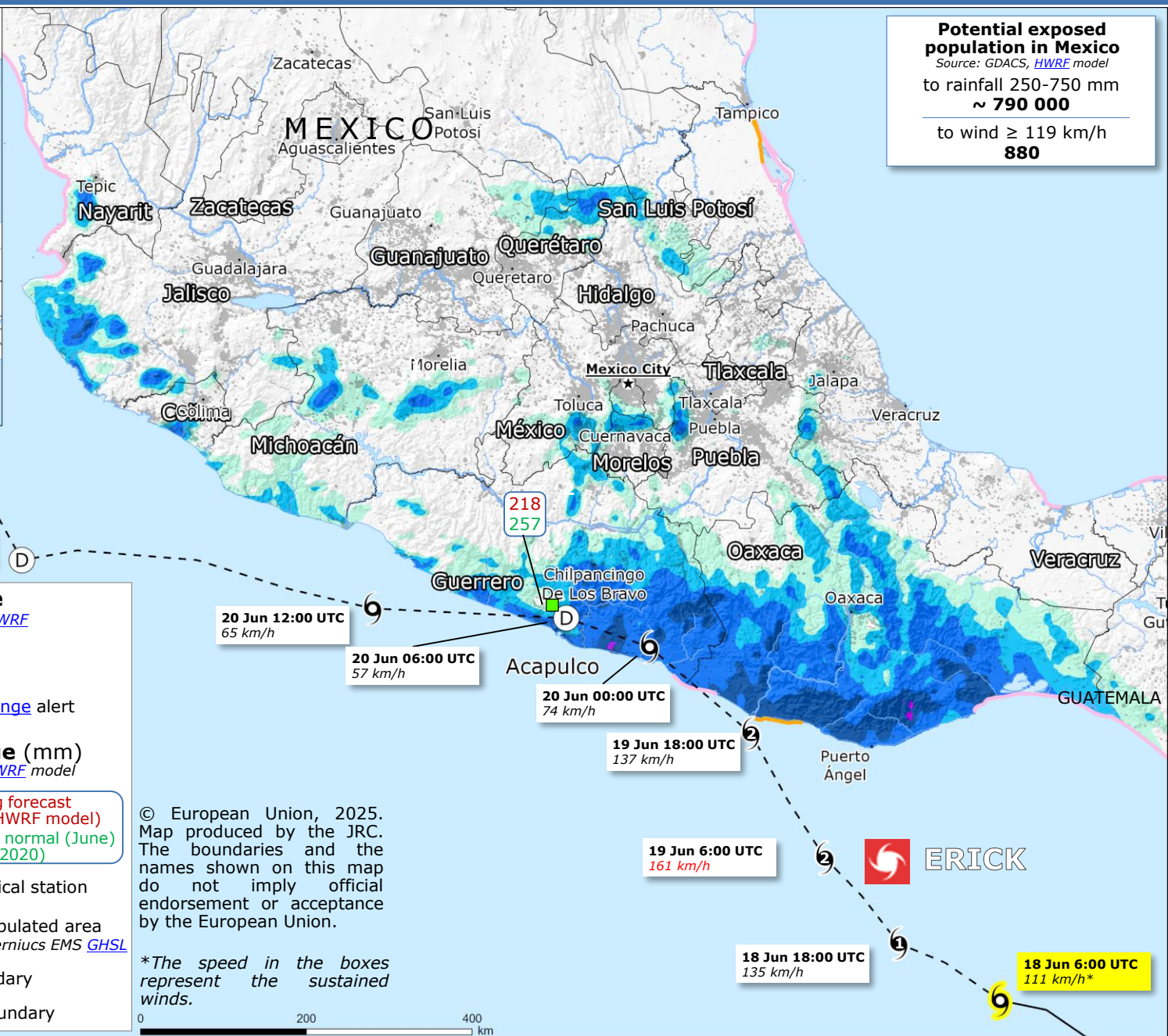


Mexico | Hurricane ERICK

Potential exposed population in Mexico
 Source: GDACS, HWRF model
 to rainfall 250-750 mm
 ~ **790 000**
 to wind ≥ 119 km/h
880



Tropical cyclone

- Source: GDACS, HWRF model
- Track
 - 119-161 km/h Hurricane Cat. 1-2
 - 63-118 km/h Tropical storm
 - <63 km/h Tropical depression

Storm surge

- Source: GDACS, HWRF
- 0.2-0.5 m
 - 0.1-0.2 m
 - GDACS Orange alert

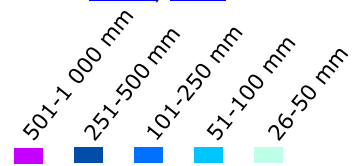
Rainfall value (mm)

Source: GDACS, HWRF model

- Meteorological station
- Densely populated area Source: Copernicus EMS GHSL
- State boundary
- Country boundary

Estimated rainfall accumulation over the entire track 17-23 Jun

Source: GDACS, HWRF model



Week-long forecast 17-23 June (HWRF model)
 Monthly climate normal (June) (1991-2020)

© European Union, 2025. Map produced by the JRC. The boundaries and the names shown on this map do not imply official endorsement or acceptance by the European Union.

*The speed in the boxes represent the sustained winds.



18 Jun 6:00 UTC
 111 km/h*