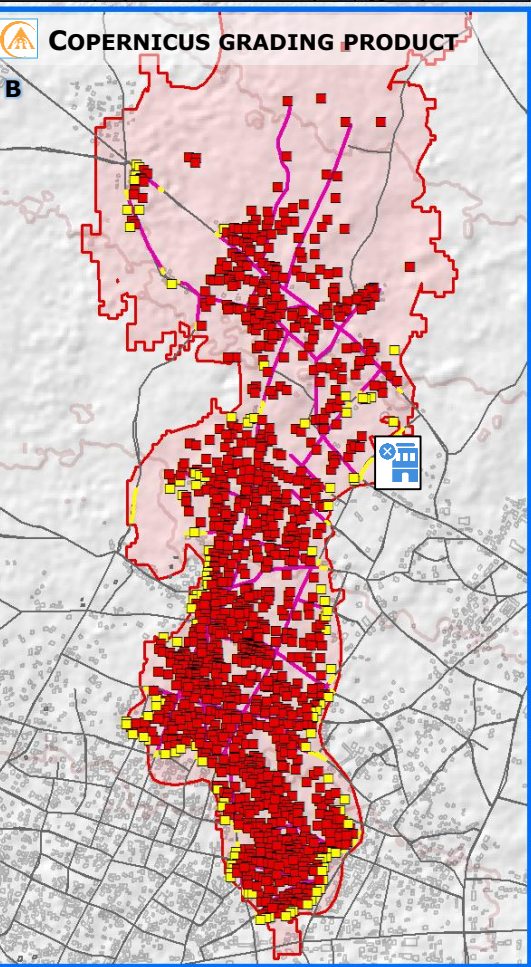
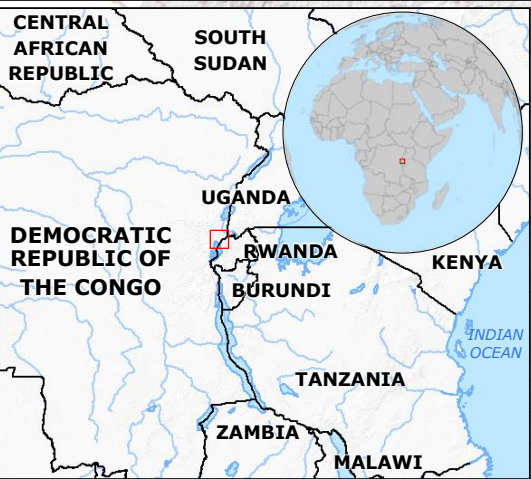


Democratic Republic of the Congo | Mount Nyiragongo eruption



Nyiragongo volcano
3,470 m
started erupting on the
22nd May 2021



- On 2 June, ERCC received a request from DRC to activate the EU Civil Protection Mechanism (UCPM) following to the volcanic eruption in Mount Nyiragongo and the related seismic activity.
- The request consists of food and non-food items, WASH items, shelter, medicines and medical equipment.
- The European Commission has allocated emergency humanitarian funding of **€2 million** for those affected by the eruption.

Source: DG ECHO

**Shaheru
adventive cone
2,800 m**

Vent 1
Vent 2
Vent 3

**DEMOCRATIC
REPUBLIC OF THE
CONGO (DRC)**

North
Kivu

Kibati

Kanyanza

Rwerere

Monigi

Buzove

RWANDA

Rubavu

Goma

Gisenyi

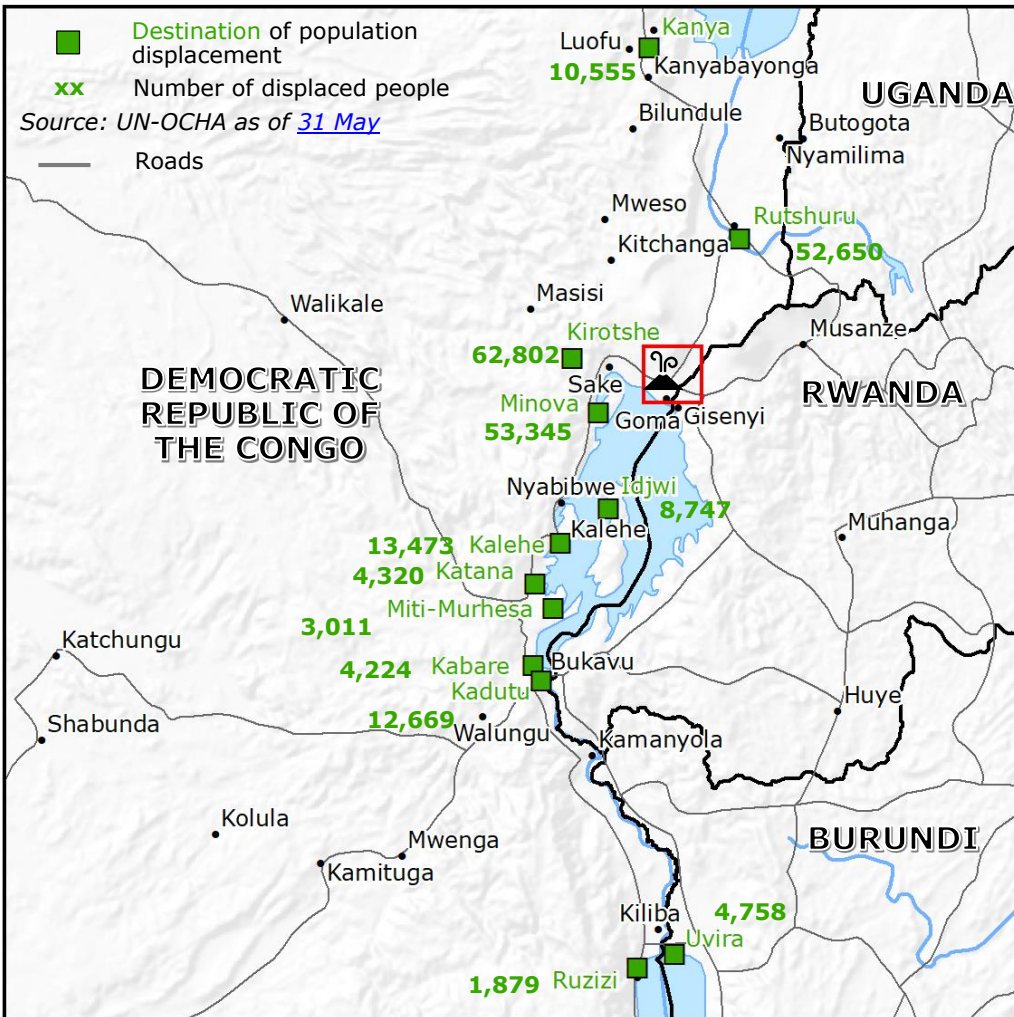
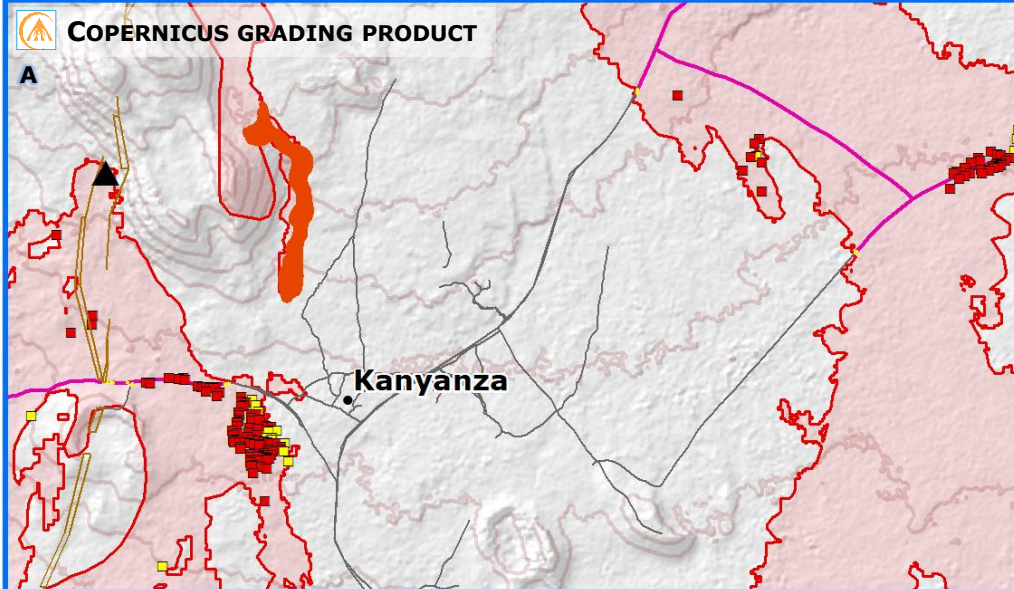
Lake
Kivu

**Humanitarian
situation overview**
Source: UN OCHA as of 25 May, 26 May,
01 June

- 31** Fatalities
- 232,433** Total displaced people
- 40** Missing people

Damage assessment
Source: Copernicus [EMSR513](#)

- 1,276** Destroyed residential buildings
- 130** Possibly damaged residential buildings



- Nyiragongo
Source: [GDACS](#), [Virunga Volcanoes](#)
- Volcanic fissure
Source: [UNITAR-UNOSAT ID3300](#), [USGS](#)
- Lava flow 23-30 May
Source: [Copernicus EMSR513](#), [UNITAR-UNOSAT ID3300](#)
- Copernicus grading product
Source: [Copernicus EMSR513](#)
- Destroyed building
- Possibly destroyed building
- Destroyed road
- Possibly destroyed road
- Main fault
Source: [GEM](#)
- Damaged waste water station
Source: [UNITAR-UNOSAT](#)
- Airport
- Closed airport
Source: [UNOCHA](#)
- Urban area
Source: [HOTOSM](#)
- Administrative division
- Country border

© European Union, 2021. Map produced by the JRC. The boundaries and the names shown on this map do not imply official endorsement or acceptance by the European Union.