

# Philippines | Mount Mayon volcanic unrest



**IMPACT OVERVIEW DUE TO THE MAYON UNREST STARTED ON JANUARY 2026**  
 AS OF 5 MAY AT 10:00 UTC SOURCE: [DSWD-DROMIC](#)

- 4 990** Displaced people\*
- 4 905** Currently sheltered people
- 280 969** Affected people
- 12** Evacuation centres

\*The figure includes sheltered people (4 905) and people outside evacuation centres (85)

**DEADLY ERUPTIONS OF MAYON SINCE 1950**  
SOURCE: [NOAA-IGDC](#)

YEAR	FATALITIES
1968	6
1981	200
1984	1
1993	75
2006	1 266
2013	5

**1 Jan 2026 Alert 2**

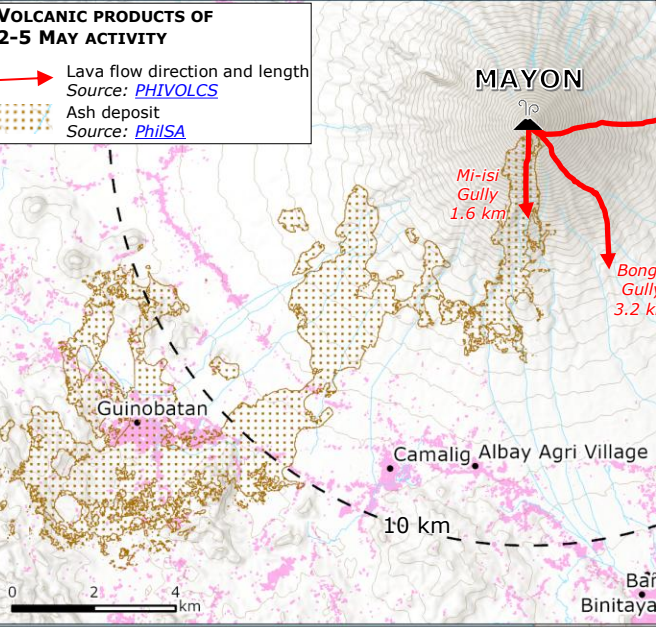
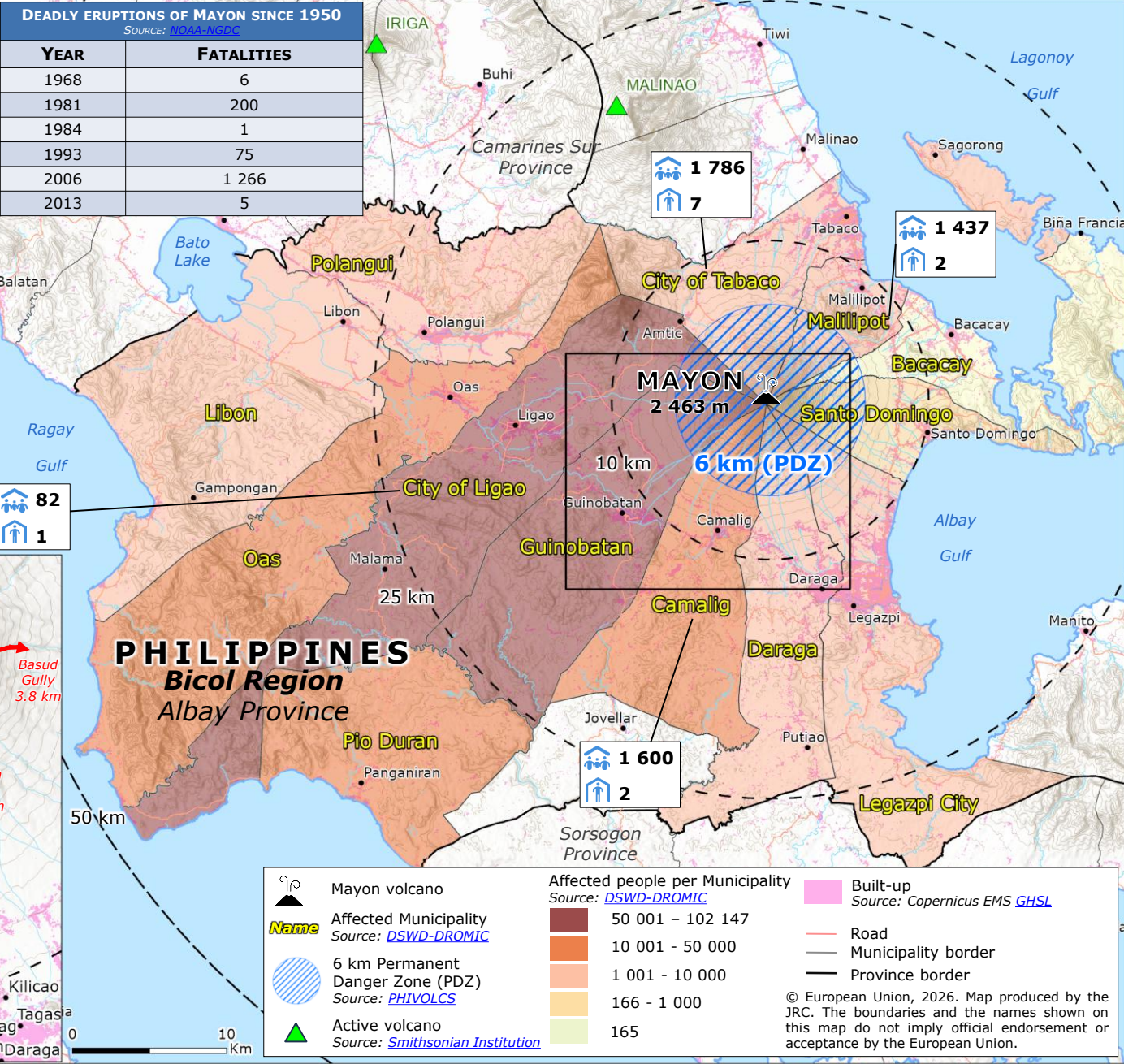
- Repeated collapse of the summit
- Detected rockfalls

**6-16 Jan 2026 Alert 3**

- Increasing volcanic activity:
- Lava flows of 2 km detected in the Bonga Gully
- SO<sub>2</sub> emissions
- Pyroclastic density current activity

**2-5 May 2026 Alert 3**

- Lava flow collapse-fed pyroclastic density current along Mi-isi Gully on the southwestern slopes
- Rockfalls and ashfall in several municipalities in the west-southwest area of Albay (Camalig, Guinobatan, and Ligao), lasting for about three hours.
- Lava flows reached radial distances of 1.6 km, 3.2 km, and 3.8 km along the Mi-isi, Bonga, and Basud Gullies



**Mayon volcano**  
Source: [Smithsonian Institution](#)

**Affected Municipality**  
Source: [DSWD-DROMIC](#)

**6 km Permanent Danger Zone (PDZ)**  
Source: [PHIVOLCS](#)

**Affected people per Municipality**  
Source: [DSWD-DROMIC](#)

	50 001 - 102 147
	10 001 - 50 000
	1 001 - 10 000
	166 - 1 000
	165

**Built-up**  
Source: [Copernicus EMS GHSL](#)

Built-up

Road

Municipality border

Province border

© European Union, 2026. Map produced by the JRC. The boundaries and the names shown on this map do not imply official endorsement or acceptance by the European Union.